

# FOR LEASE

Available Now

**ARX**  
BY KINGSMED

## Unit 10

75 Stapylton St, North Lakes



GFA: 248sqm (Incl. Mezzanine)



Bruce Highway signage



5 dedicated parking bays



Customisable office fit out  
optional



Internal clearance: 6.9-7.9m

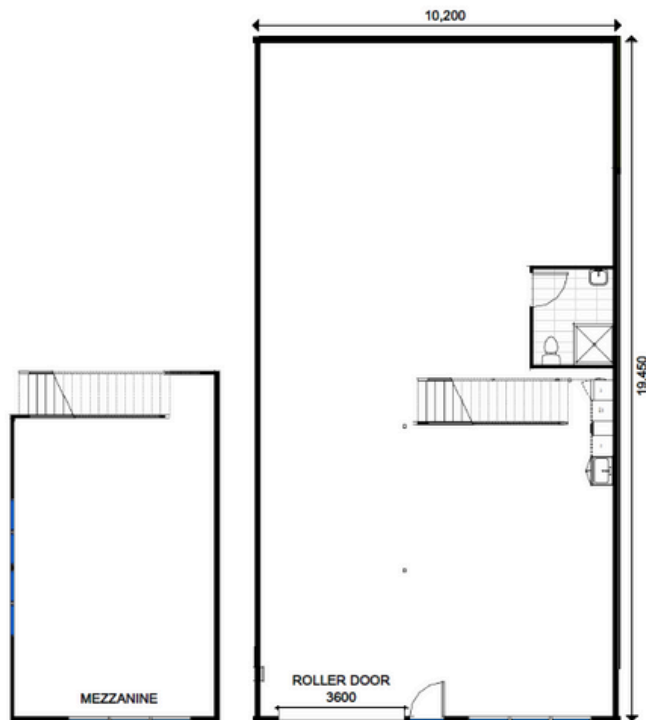


Roller door: 3.6 x 5.0m

[arxnorthlakes.com.au](http://arxnorthlakes.com.au)

# Features

- 3 phase power
- Kitchenette including fridge, microwave and dishwasher
- Private toilet and shower
- Concrete driveways for 12.5m rigid vehicles
- Digital access control and CCTV



Scan to register your interest

This document has been prepared by Kingsmede Pty Ltd ABN 21 054 526 635 for general information purposes only. Whilst every care has been taken in relation to its accuracy, no warranty of accuracy is given or implied. You should obtain your own independent advice before making any decisions about the property referred to in this document. Images contained in this document have been used to enable the customer to visualise the development concepts only, and are not intended to definitively represent the final product. September 2024.

**GLEN WRIGHT**

+61 406 022 888  
gwright@kingsmede.com.au

**MORGAN RUIG**

+61 403 149 828  
morgan.ruig@cushwake.com

**MITCH TAULELEI**

+61 447 548 885  
mitch.taulelei@cushwake.com

**LUIS PLAZIBAT**

+61 481 393 202  
luis.plazibat@cushwake.com