



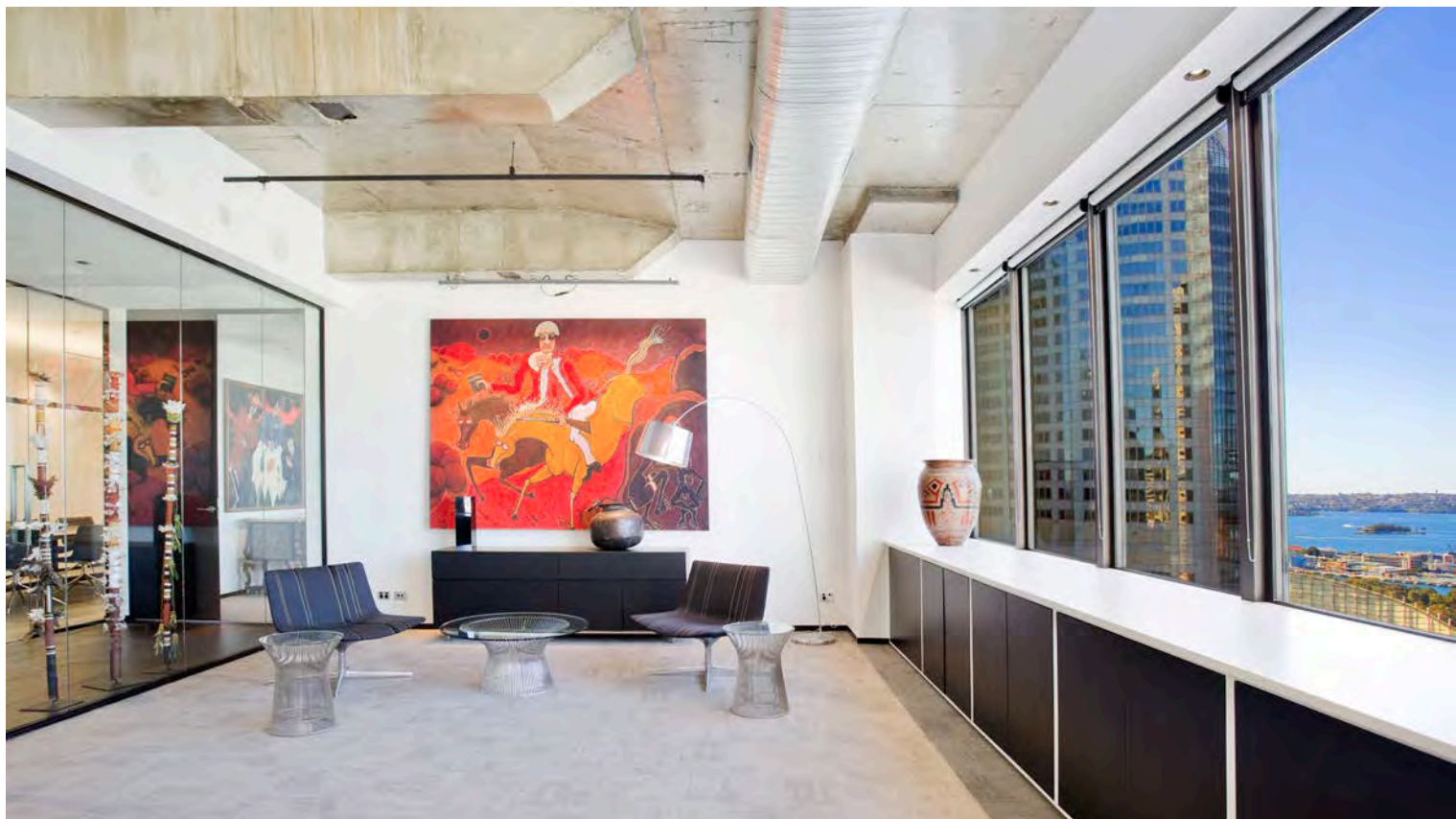
Suite 25.01

25 Bligh Street

NLA : 268m²
Available: July 2022

KINGSMEDe

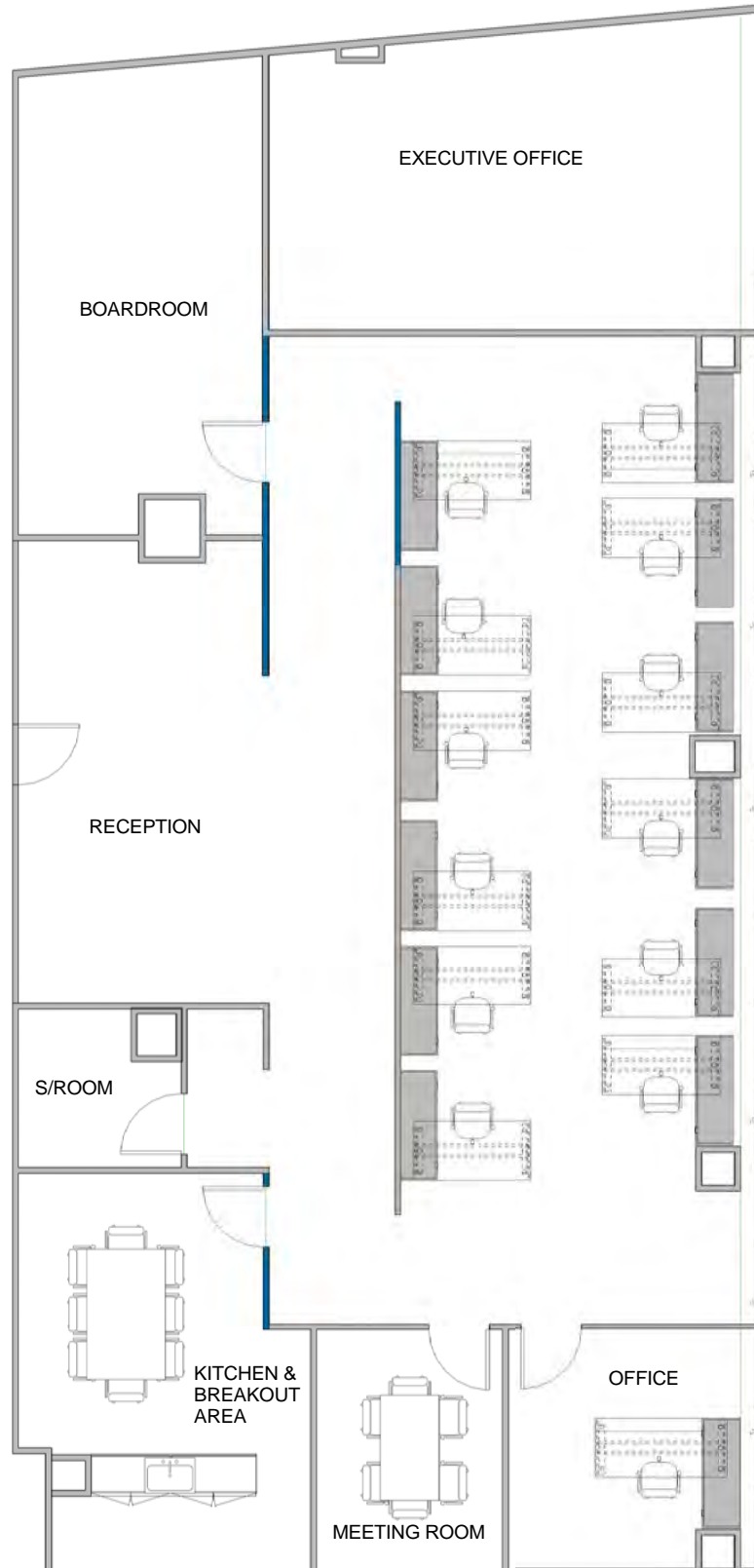
Contact Sarah
0421 133 848
swillcox@kingsmede.com.au



Suite 25.01

NLA: 268m²

- Highly spec'd fitout in situ with luxe finishes and city views
- Spacious reception
- Fully-fitted kitchen and breakout area
- 12 seater boardroom
- Open plan with 12 workstations
- Onsite building management
- Private gym and squash court
- End of trip facilities, including towel service
- Excellent transport links



Bligh Street