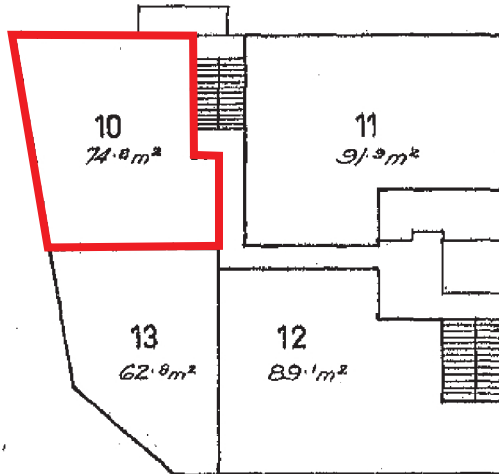


BUILDING UNITS PLAN No. 1072

LEVEL E



Units 10, 11, 12 & 13
Commercial purposes only.

Scale 1:250 (Metric)

Floor Areas are approximate only.

TOSTEE CONSTRUCTION COY. PTY. LTD.
by its duly constituted Attorney
JOHN WILLIAM McDONALD in the
presence of:

D. Campbell Schuter

SIGNATURE OF REGISTERED PROPRIETOR.

TOSTEE CONSTRUCTION COY. PTY. LTD.
by its duly constituted Attorney

..... *John W. McDonald*

Alan G. ...
~~SECRETARY~~ TOWN CLERK.

GOLD COAST CITY COUNCIL.