

C. Cordingley
 Colin Ray Cordingley (dir)
C. Cordingley
 Christine Jean Cordingley (dir)
 Cordingley Trading Pty Ltd

UNIT PLAN No. 97/112 SHEET 2 of 6
 THIS SHEET REPLACES
 *LOT/PORTION/SECTION No 6536
 *TOWN/HUNDRED OF Darwin

PROPRIETOR DATE
 26/8/97

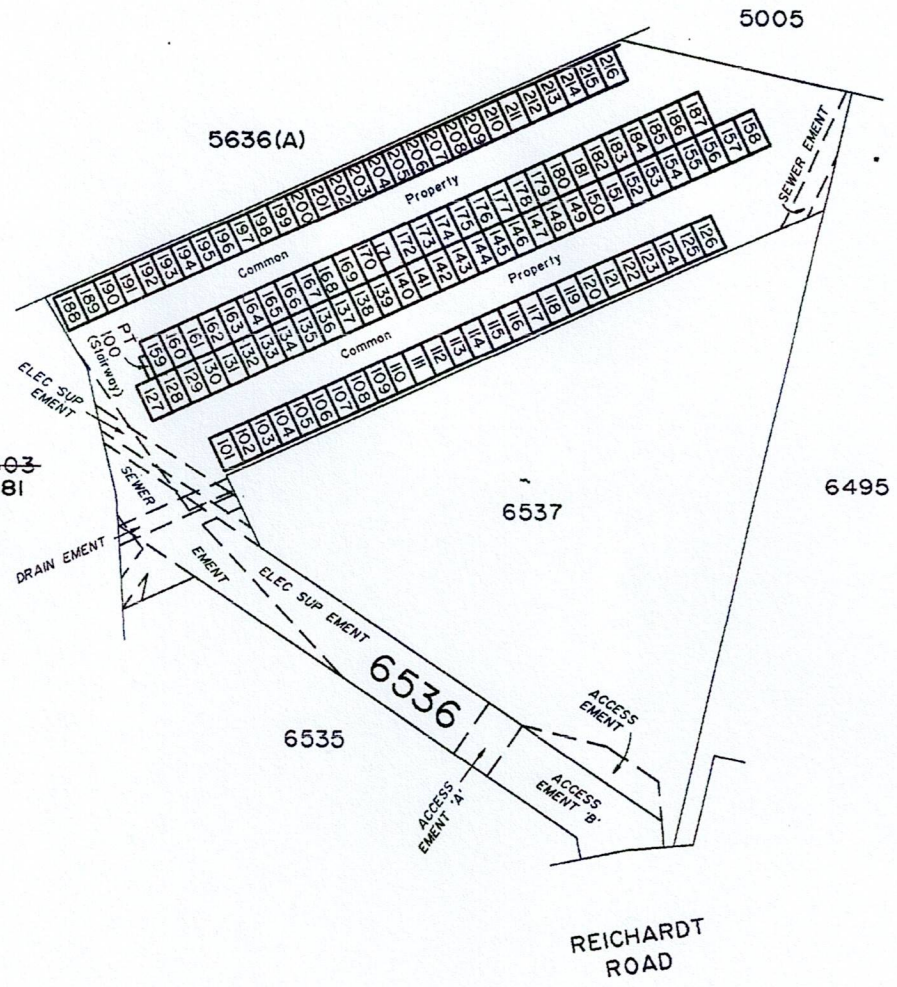
LICENSED SURVEYOR
 K. Schulz 12/8/97
 Keith Leslie Schulz

[Signature]
 *MINISTER OR DELEGATE
 14/10/1997
 DATE

GROUND FLOOR PLAN

Note
 Access Easements, Electricity Supply Easements, Sewerage Easements
 and a Drainage Easement affect the Common Property
 See plan LTO 95/81 and LTO Instrument Numbers 354722
 and 354723 for easement details

Numbers 100 to 216 denote Unit Numbers
All units have a total area of 19m² excluding Unit 100



10 0 10
 metres
 *.....DELETE IF INAPPLICABLE