

BUILDING CODE OF AUSTRALIA AND STANDARD AUSTRALIA
 TOTAL SITE AREA - 4843m²
 TOTAL BUILDING AREA INCL. GROUND AND FIRST FLOOR - 2797m²
 BUILDING CLASSIFICATION - CLASS 5 AND 7B
 TYPE OF CONSTRUCTION - TYPE C
 HYDRANT - 1 EXISTING 18.7METRES SOUTH OF DRIVE WAY?
 PORTABLE FIRE EXTINGUISHERS - TO AS 2444
 SMOKE MANAGEMENT - TBC
 HANDRAILS - TO COMPLY WITH BCA PART 3.9
 FIRE EXTINGUISHER - CLASS 'A' FIRE EXTINGUISHER TO AS2444.2011 REQUIREMENTS.
 TACTILES - TACTILES ARE TO COMPLY WITH AS1428.4.1 PART 4 2010.

LANDSCAPING REQUIREMENTS
 BASED ON 8% OF TOTAL SITE AREA
 10% OF 4843m² = 484m² REOD. SUPPLIED 568m²
 SOFT LANDSCAPING 492m² AND HARD LANDSCAPING 76m² SUPPLIED

CARPARKING REQUIREMENTS
 BASED ON 1 BAY PER 50m² OF NLA FOR INDUSTRIAL AREA.
 INDUSTRIAL AREA 2472m² OF NLA = MINIMUM 49.4 BAYS
 BASED ON 1 BAY PER 30m² OF NLA FOR OFFICE.
 GROUND OFFICE'S AREA 136m² OF NLA = MINIMUM 4.5 BAYS
 UPPER OFFICE'S AREA 116m² OF NLA = MINIMUM 3.9 BAYS
 REQUIRED CAR BAYS = 57.84 BAYS
 PROVIDED CAR BAYS = 58 BAYS, including on street parking

DRAINAGE CALCULATIONS
 SITE AREA = 4843m²
 LANDSCAPE = 568m²
 CAR PARKING = 1582m²
 4843 - 568 = 4275m² IMPERVIOUS AREA
 4275 x 133 = 569m³
 1582m² CAR PARKING x 0.125 POND VOLUME = 197.75m³
 569m³ - 137 = 432m³
 432m³ / 17.1 (1800x1800) = 25 WELLS = 25 SOAKWELLS REQUIRED

LEGEND

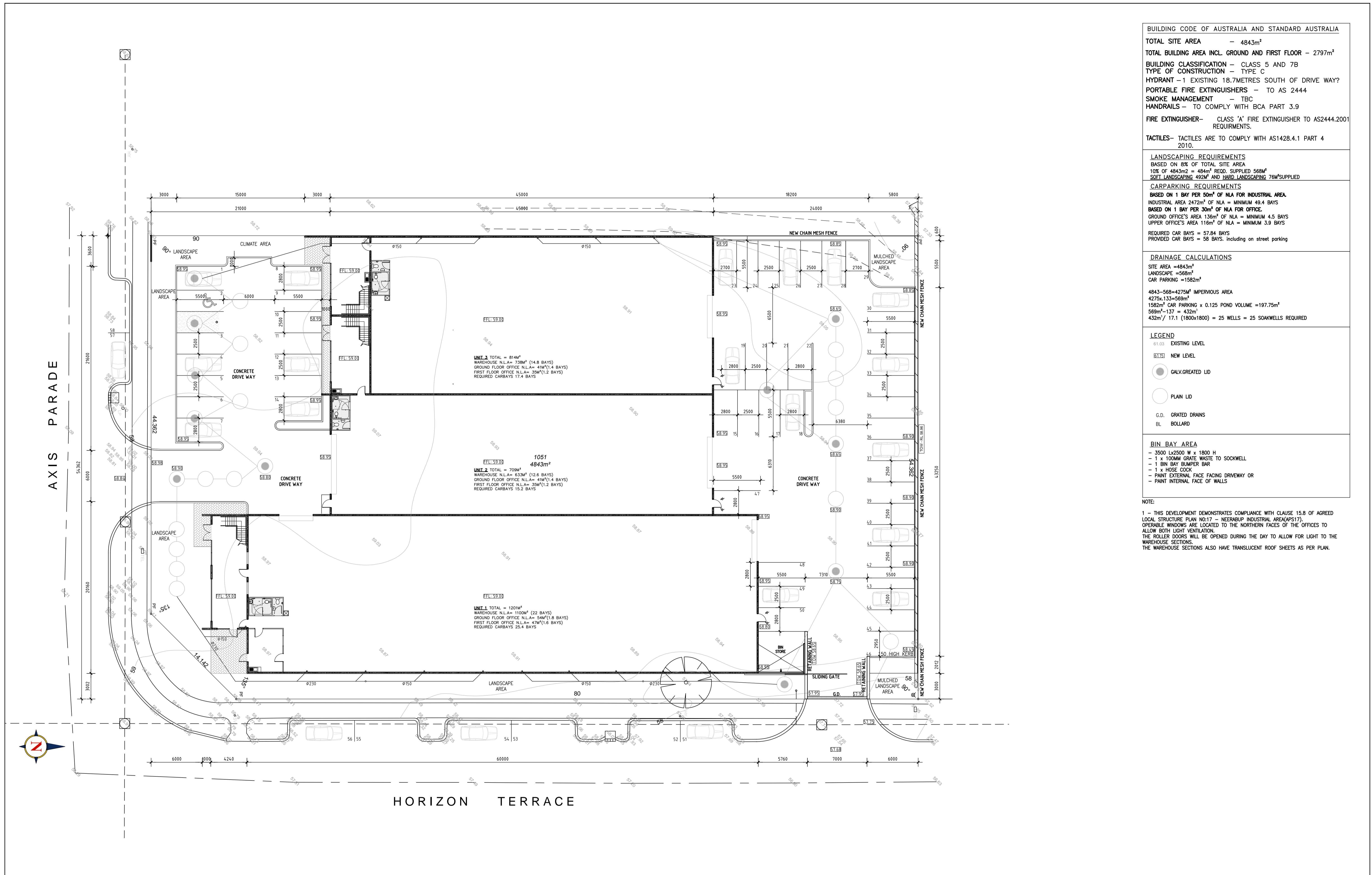
- 61.03 EXISTING LEVEL
- 61.15 NEW LEVEL
- GALV. GREATED LID
- PLAIN LID
- G.D. GRATED DRAINS
- BL BOLLARD

BIN BAY AREA

- 3500 Lx2500 W x 1800 H
- 1 x 100MM GRATE WASTE TO SOCKWELL
- 1 BIN BAY BUMPER BAR
- 1 x HOSE COCK
- PAINT EXTERNAL FACE FACING DRIVEWAY OR
- PAINT INTERNAL FACE OF WALLS

NOTE:

1 - THIS DEVELOPMENT DEMONSTRATES COMPLIANCE WITH CLAUSE 15.8 OF AGREED LOCAL STRUCTURE PLAN NO:17 - NEERABUP INDUSTRIAL AREA (APS17). OPERABLE WINDOWS ARE LOCATED TO THE NORTHERN FACES OF THE OFFICES TO ALLOW BOTH LIGHT VENTILATION. THE ROLLER DOORS WILL BE OPENED DURING THE DAY TO ALLOW FOR LIGHT TO THE WAREHOUSE SECTIONS. THE WAREHOUSE SECTIONS ALSO HAVE TRANSLUCENT ROOF SHEETS AS PER PLAN.



No	AMENDMENT	DWN	DATE	CHKD	No	AMENDMENT	DWN	DATE	CHKD
4	AMENDED PLAN, ISSUED TO BUILDER	TS	31.10.13	DS					
3	AMENDED PLAN, ISSUED TO BUILDER	TS	29.10.13	DS					
2	AMENDED PLAN, ISSUED TO BUILDER	TS	27.10.13	DS	6	ISSUED FOR DA APPROVAL	TS	18.12.13	DS
1	ISSUED FOR DA APPROVAL	TS	26.10.13	DS	5	AMENDED PLAN, ISSUED TO BUILDER	TS	31.10.13	DS

PROJECT :
PROPOSED WAREHOUSE AND OFFICES
 LOT 1051 CNR AXIS AND HORIZON TERRACE
 NEERABUP

DRAWING TITLE:
SITE PLAN

BUILDER:

ARMADA CONSTRUCTION GROUP
 PTY LTD
 MOB:0420 967 043 OFFICE:08 9562 1653
 FAX:08 9562 3238

SCALE	CHECKED	DRAWING No.	REV.
1:200		ARM-1036	A01
DATE	DRAWN		
DEC 2012	TS		6

SHEET - A1