

For Lease - Prime Corner Position

Central Business Location - Overlooks Lake



Gross Rent
\$5875/month + gst

Area - 170m²*

240 Varsity Pde, Varsity Lakes

- Ideal food premises with large undercover alfresco area in the heart of the Varsity business area close to Bond University.
- Restaurant fitout with 3 cool and freezer rooms including one with keg lines plus caged storage in basement.



**Five
Car
Bays**



Superb Opportunity for Secure Tenant

view more at www.robbyproperty.com *approximately

For enquiries, professional & confidential service

Phone Wayne Robbie on

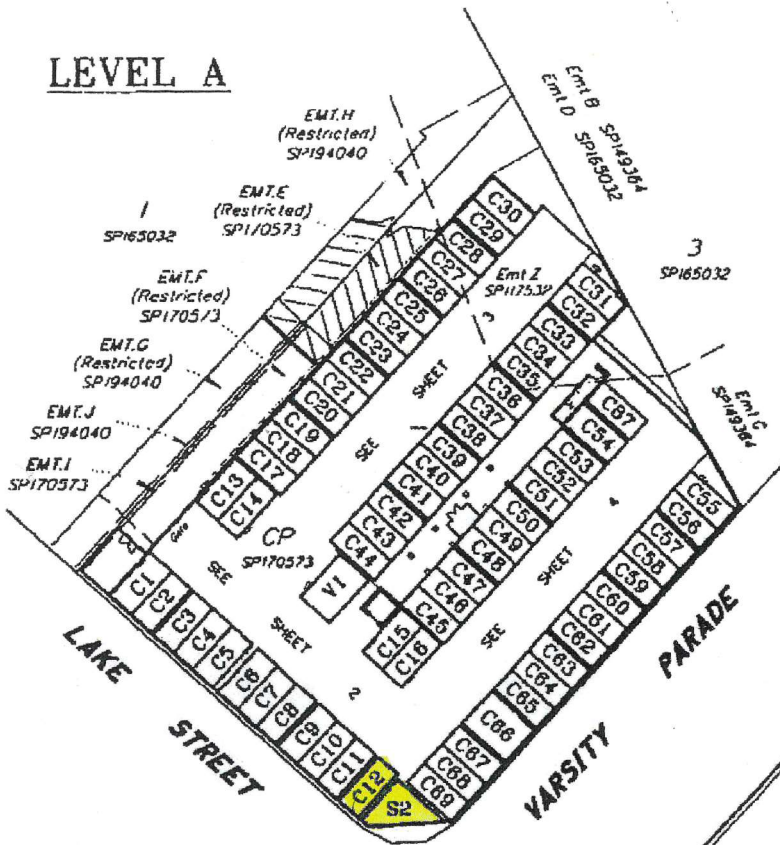
(07) 5592 3144 or 0419 772 867



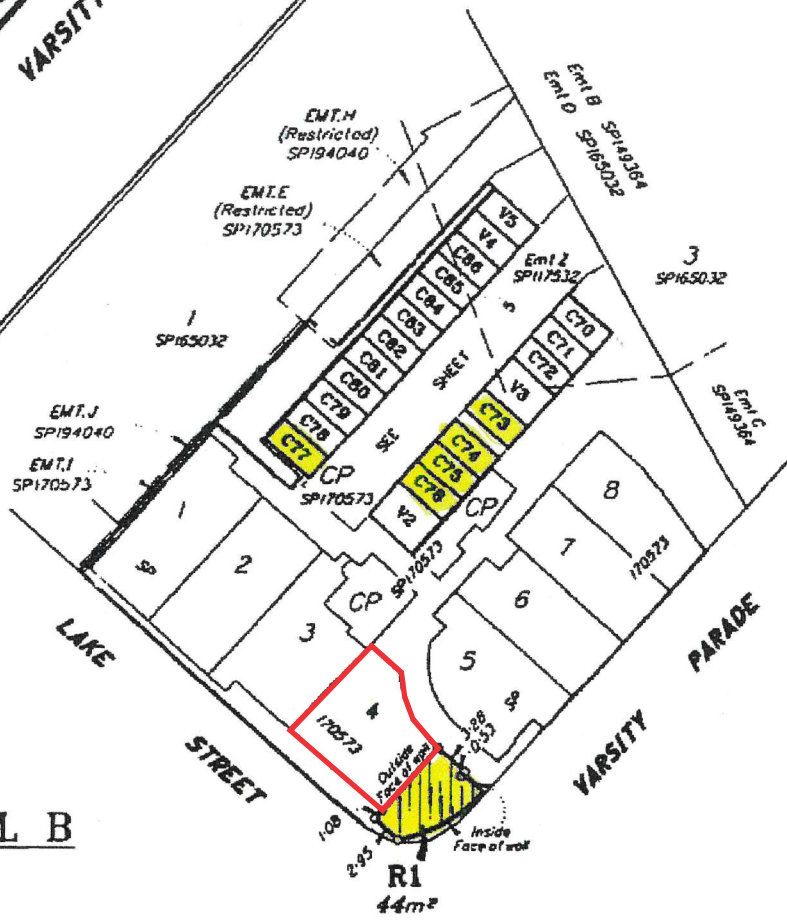
Robbie & Associates
Property Services



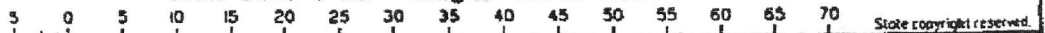
LEVEL A



LEVEL B



Scale 1:500 ● A3 - Lengths are in Metres.



MASSIE COASTAL PROPERTY LTD. ACN 082 121 293
 Cadastrol Surveyors certify that the details shown
 on this sketch plan are correct.



Cadastrol Surveyor / Director

Date 6/6/2006

**Plan of Exclusive Use Areas in
 Common Property on Levels A & B
 of "Central 240"
 CTS (SP170573)**

PARISH: **GILSTON**

COUNTY: **Ward**

Meridian:

G/N's: **NO**

Scale: **SEE BAR SCALE**

Format: **SKETCH**

7004-EU-49
 SHEET 1 OF 5

Plan Status: