

**GOOD IS  
ACCESS TO  
4M CONSUMERS**

**GREAT IS  
WHAT YOU DO  
FROM HERE**

MAKING  
SPACE  
FOR  
GREATNESS



Riverwood Business Park  
92-100 Belmore Road  
Riverwood, NSW

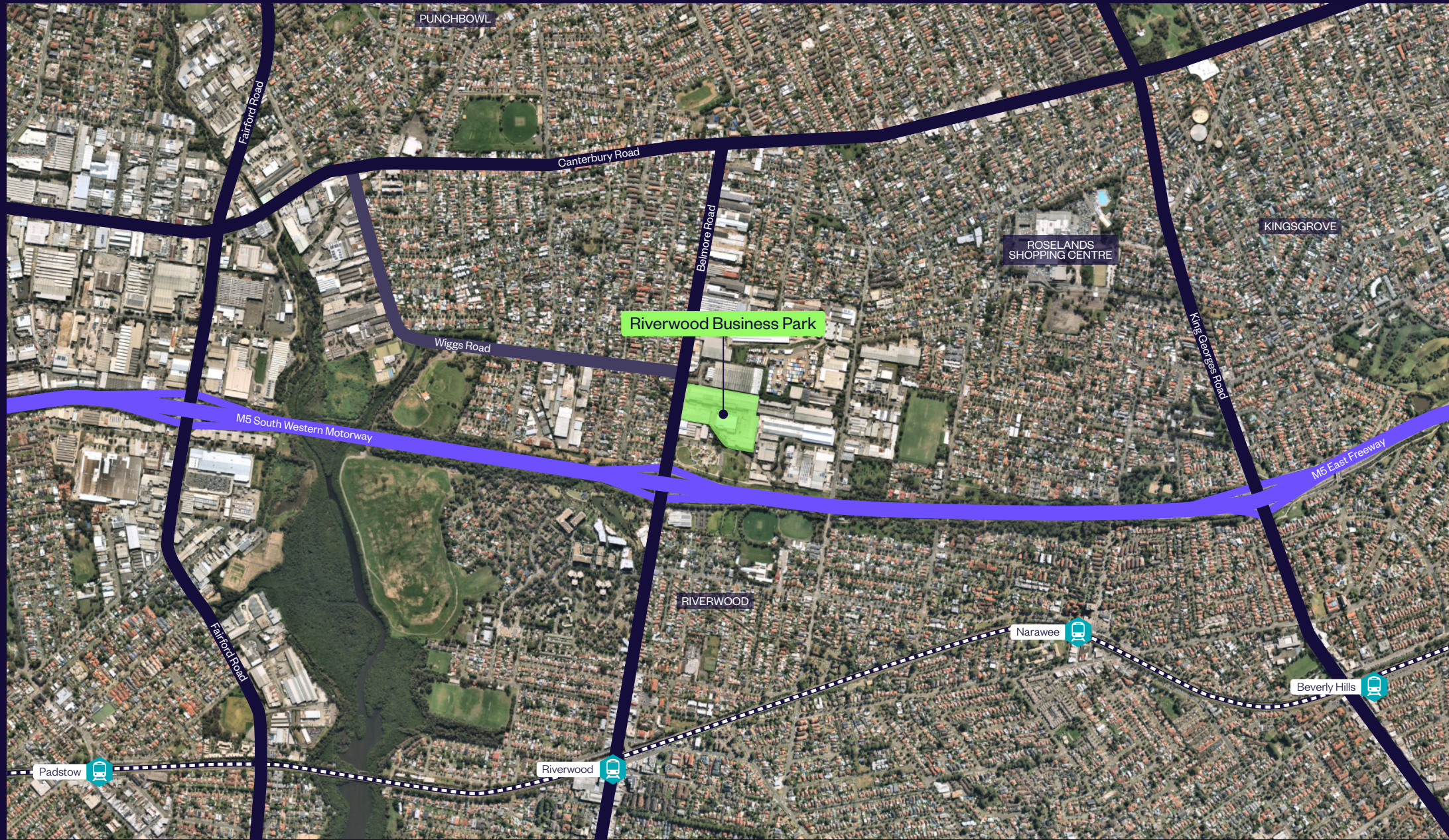
# Strategic location



Riverwood Business Park is a popular multi-unit estate offering quality warehouse and office space for lease in the heart of Riverwood in south-west Sydney.

With excellent connectivity to major arterial road, bus and train networks, now is the time to join Wilkhahn, Australis Music, Mister Minit and others at this well-located estate.

# VIEW FROM ABOVE



PUNCHBOWL

Fairford Road

Canterbury Road

Belmore Road

King Georges Road

ROSELANDS SHOPPING CENTRE

KINGSGROVE

Riverwood Business Park

Wiggs Road

M5 South Western Motorway

M5 East Freeway

RIVERWOOD

Narawee

Beverly Hills

Padstow

Riverwood



Positioned only 300 metres from the M5 Motorway and 1.3 kilometres from Riverwood Station, the site offers direct access to Sydney Airport and the CBD.

Users also enjoy an on-site café and easy access to range of shops and services along Belmore Road, and at the nearby Roselands Shopping Centre and Bankstown Shopping Centre.

# CENTRAL CONNECTION

---

**75M**

to bus stop

---

**300M**

to M5 Motorway

---

**1KM**

to Canterbury Road

---

**1.3KM**

to Riverwood train station

---

**13.6KM**

to Sydney Airport

---

**Easy  
access**

## Key area statistics

 **4.1m**  
TOTAL POPULATION

 **1.4m**  
TOTAL HOUSEHOLDS

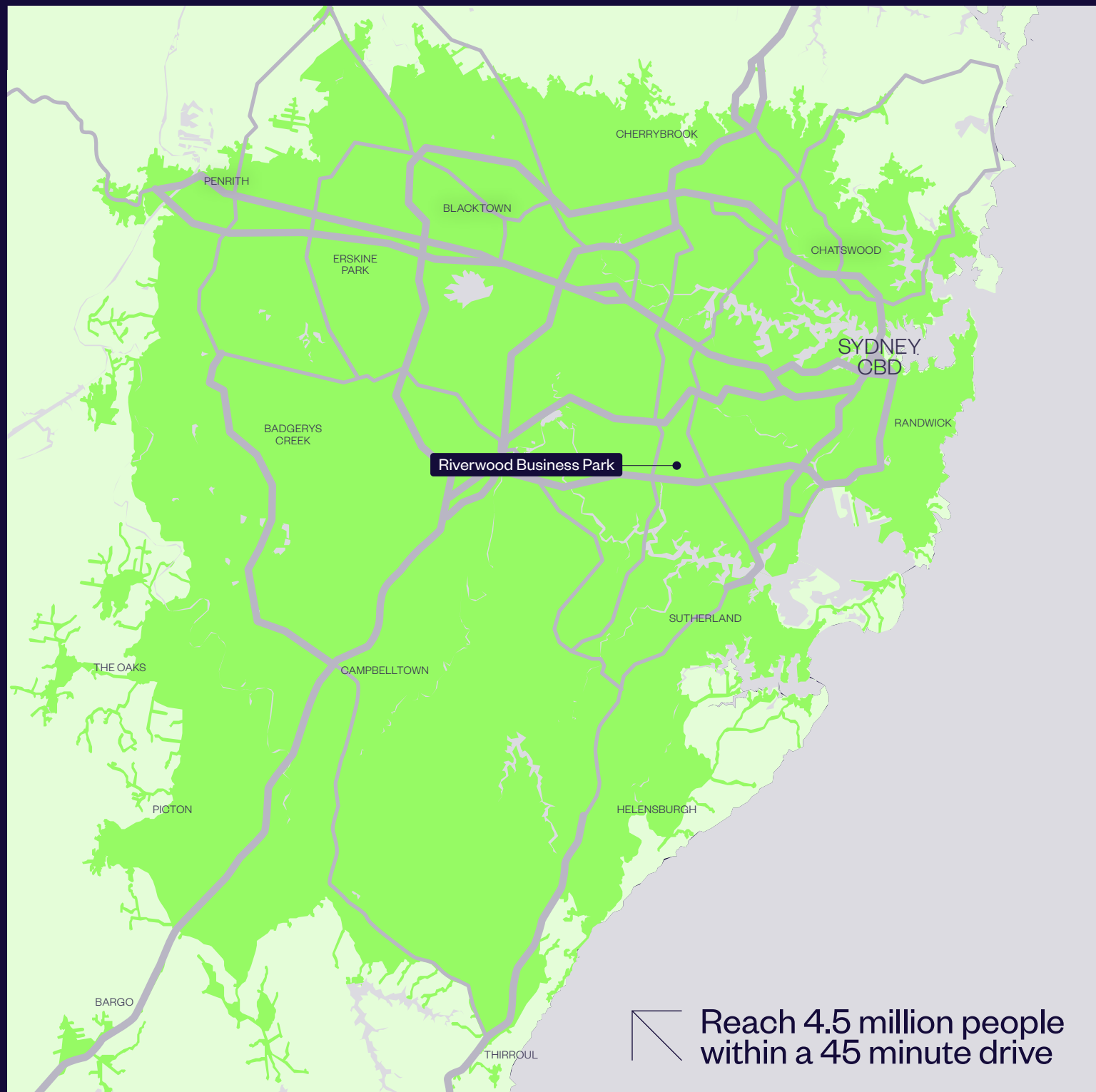
 **\$231.4bn**  
TOTAL PURCHASING POWER

## Total spend on

 **\$5.9bn**  
CLOTHING


 **\$19.1bn**  
FOOD + BEVERAGE

 **\$4.7bn**  
PERSONAL CARE



Source: Esri and Michael Bauer Research

**WITHIN  
45 MINUTE  
DRIVE TIME**

 Reach 4.5 million people  
within a 45 minute drive

# MASTERPLAN



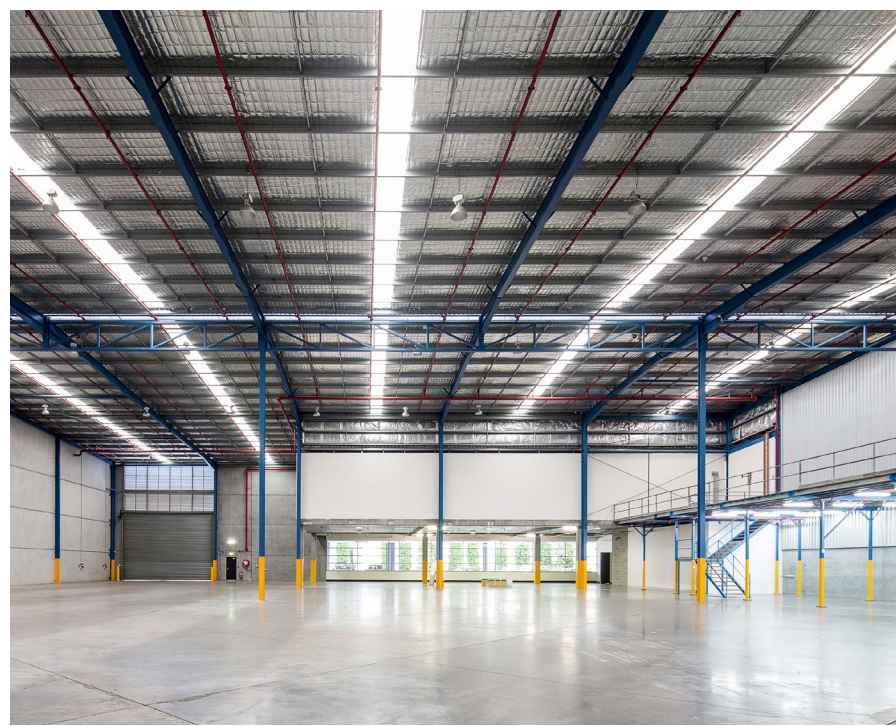
BELMORE ROAD



■ FOR LEASE

# FEATURES

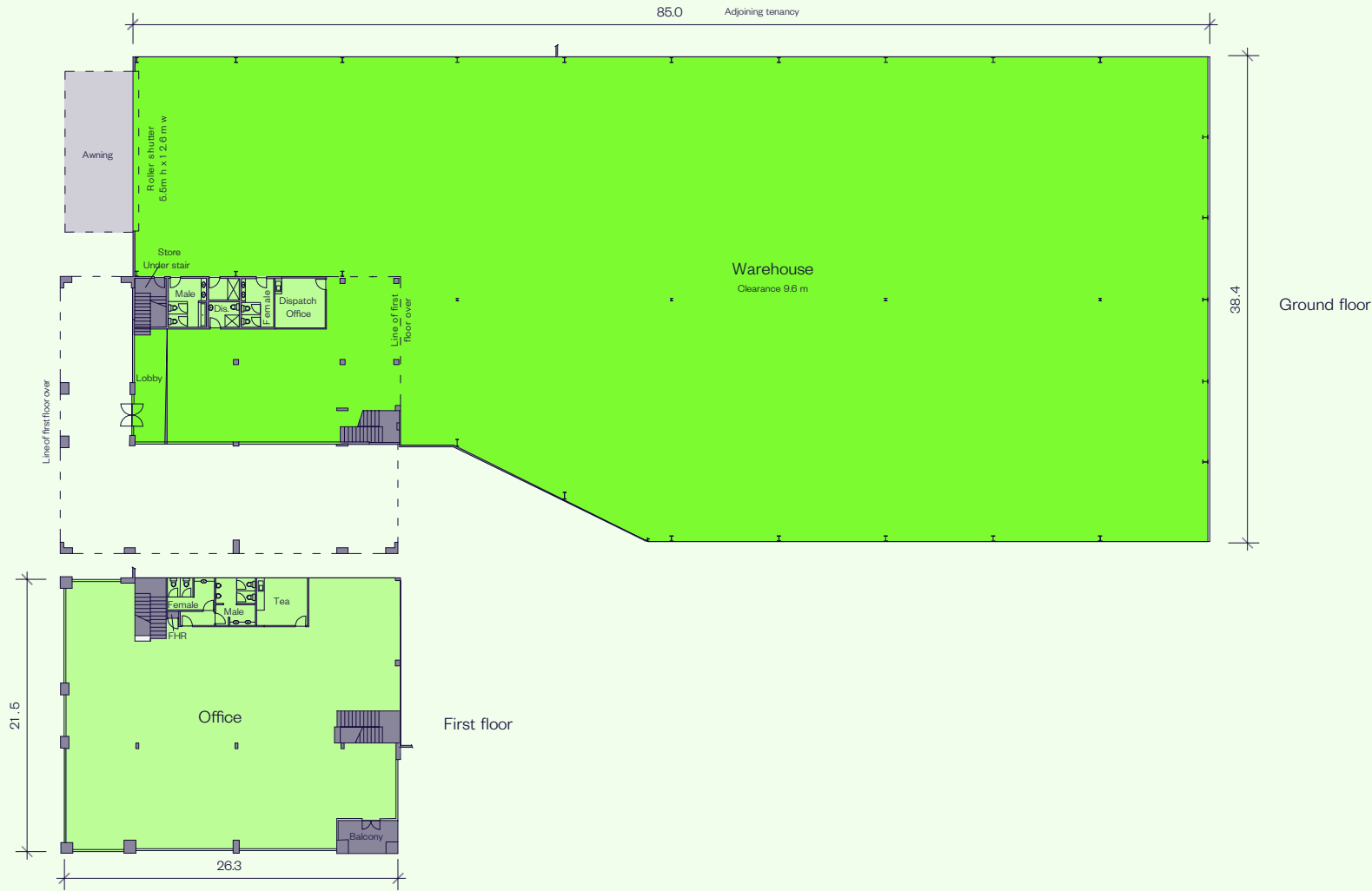
- + Modern 3,569 sqm office and warehouse space
- + Roller shutter access
- + Large awning for all-weather loading
- + ESFR sprinklers
- + 24 on-site parking spaces.





# UNIT 14 PLAN

AREA SCHEDULE	SQM
Ground floor	
Warehouse	2,985.6
Lobby	23.7
First floor	
Office	559.7
<b>Total building area</b>	<b>3,569</b>
Awning	68
Balcony	12



Our teams provide progressive insights to business needs in an ever-changing world



### Customer focus

Dedicated Building Managers provide on-site support for day-to-day operations, while Property and Asset Managers are available to discuss leasing, administration or modifications to tenancies.

### Presentation

Our property services teams attend to your operational needs and provide unparalleled maintenance and presentation standards.

# SERVICE

We aim to be leaders in environment, social and governance – with a long-term, sustainable approach that leads to positive economic, environmental and social outcomes for our business, our stakeholders and the world more broadly.



Here's a snapshot of some of our initiatives across our Australian portfolio.

**Procurement**

To ensure the products and services we purchase don't harm people or the planet, we're working step-by-step with our suppliers and contractors. On the horizon are clear targets and minimum expectations for our supply chain partners. But for now, we are working together to set a baseline and understand obstacles and opportunities.

**Climate resilience**

Goodman has several control measures in place to future-proof our portfolio, keep our customers safe, and mitigate against the risks of climate change. These measures include inspections of structure and façade, roof audits, landscape maintenance and potable water monitoring.

**Solar**

We have installed over 50MW of rooftop solar on approximately 170 of our properties in Australia. That's more than 200,000 solar panels – enough to power 12,000 homes, or the equivalent of taking 30,000 passenger vehicles off the road.

**LED lighting + motion sensors**

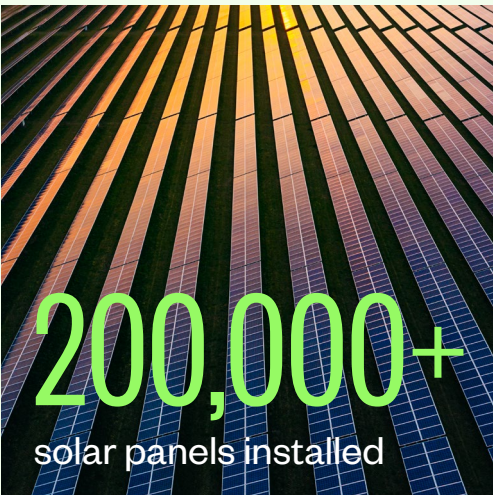
100% of the portfolio will have LED lighting and motion sensors installed by end June 2024. This will reduce energy consumption and provide optimum lighting comfort for our customers.

**Electric vehicle future**

We recognise our role in preparing our estates, our people, and our customers for an EV future. We're supporting the switch to EVs by transitioning our own fleet and encouraging our people to purchase EVs, providing dedicated EV bays and charge points at all new developments, and collaborating with our customers.

**Sustainable landscaping**

- + We have installed tanks to harvest rainwater
- + Our properties use smart potable water metering that allows proactive management of water consumption across the portfolio
- + All handheld equipment used in landscaping and cleaning work at our properties is battery operated
- + We use drought tolerant plants combined with ballast rock
- + We recycle our green waste, and as a result, have processed approximately 500 cubic metres of green waste to date
- + At Eastern Creek in NSW, we built a fully sustainable garden comprising 23 edible garden beds with stingless native bees, compost, worm farm and permaculture practices
- + We use steam weed control which surpasses the chemical Glyphosate.



# Sustainability

# INCLUSION AND DIVERSITY

Central to our purpose of “making space for greatness” is creating an environment where I&D is embedded into everything we do.

We work to create a culture where our people are valued and have the opportunity to realise their potential.

We are all accountable for making it a reality. Our people are champions of openness, fairness and respect.



 At Goodman, we lead the way in inclusion and diversity

# FIRST NATIONS ENGAGEMENT



We acknowledge the Aboriginal and Torres Strait Islander Traditional Custodians of the land on which we work and live. We pay respect to Elders past, present and emerging. We value their custodianship of over 65,000 years.



Artist Danielle Mate with her artwork created for Goodman's Reflect RAP.

As a business that works across many locations, we have a responsibility to listen, learn and walk alongside First Nations peoples to ensure our activities support the continuing of connection to their land, waters, cultures, languages and traditions.

Goodman received formal endorsement of our Reflect RAP. We have clear commitments around the core pillars of relationships, respect and opportunities.

Our RAP journey is ongoing, and we're determined to make a difference.

# GOODMAN FOUNDATION

The Goodman Foundation unites our people, properties and resources to make a tangible difference to the lives of people in our communities. Through our partnerships with an exceptional – and often grassroots – group of charities, we’re able to make a real difference, where and when it matters most.



Above: Clontarf Foundation  
Bottom L-R: Clontarf Foundation, Thread Together, Bestest Foundation

## How we do good in the world

The Goodman Foundation offers support to charities within three key areas:

### Children and youth

Charity organisations who help protect, nurture and support children or young people.

### Food rescue and environment

Charity organisations who reduce waste and support those in need by redistributing fresh food or useful items that would otherwise go to landfill.

### Community and community health

Charity organisations who support those living with a condition, illness or disability, or whose efforts help to create a more inclusive and equitable community.

LEARN MORE ABOUT THE GOODMAN FOUNDATION



# CONTACT



## ENQUIRE NOW

Flynn Doolan  
Property Manager

T. 02 9230 7170  
M. 0481 550 180  
[flynn.doolan@goodman.com](mailto:flynn.doolan@goodman.com)

Charlie Abou-Touma  
Portfolio Manager

T. 02 9230 7416  
M. 0414 544 127  
[charlie.abou-touma@goodman.com](mailto:charlie.abou-touma@goodman.com)

Goodman  
The Hayesbery  
1-11 Hayes Road  
Rosebery NSW 2018  
T. 02 9230 7400

[VIEW THIS PROPERTY ONLINE](#)

