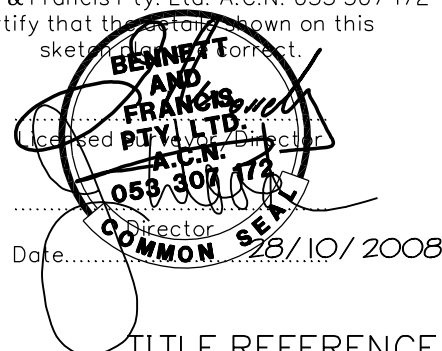


Bennett & Francis Pty. Ltd. A.C.N. 053 307 172
certify that the estate shown on this
sketch plan is correct.



PLAN FOR LEASE PURPOSES

(Being part of the First Floor of a Office Building)

Of Lease 1A
In Lot 1 on RP206608,
Parish of Enoggera,
County of Stanley.

ALL AREAS SHOWN HEREON ARE
CALCULATED TO THE NEAREST
SQUARE METRE.



Bennett & Francis Pty. Ltd.

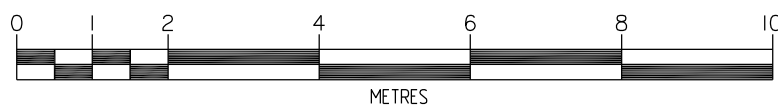
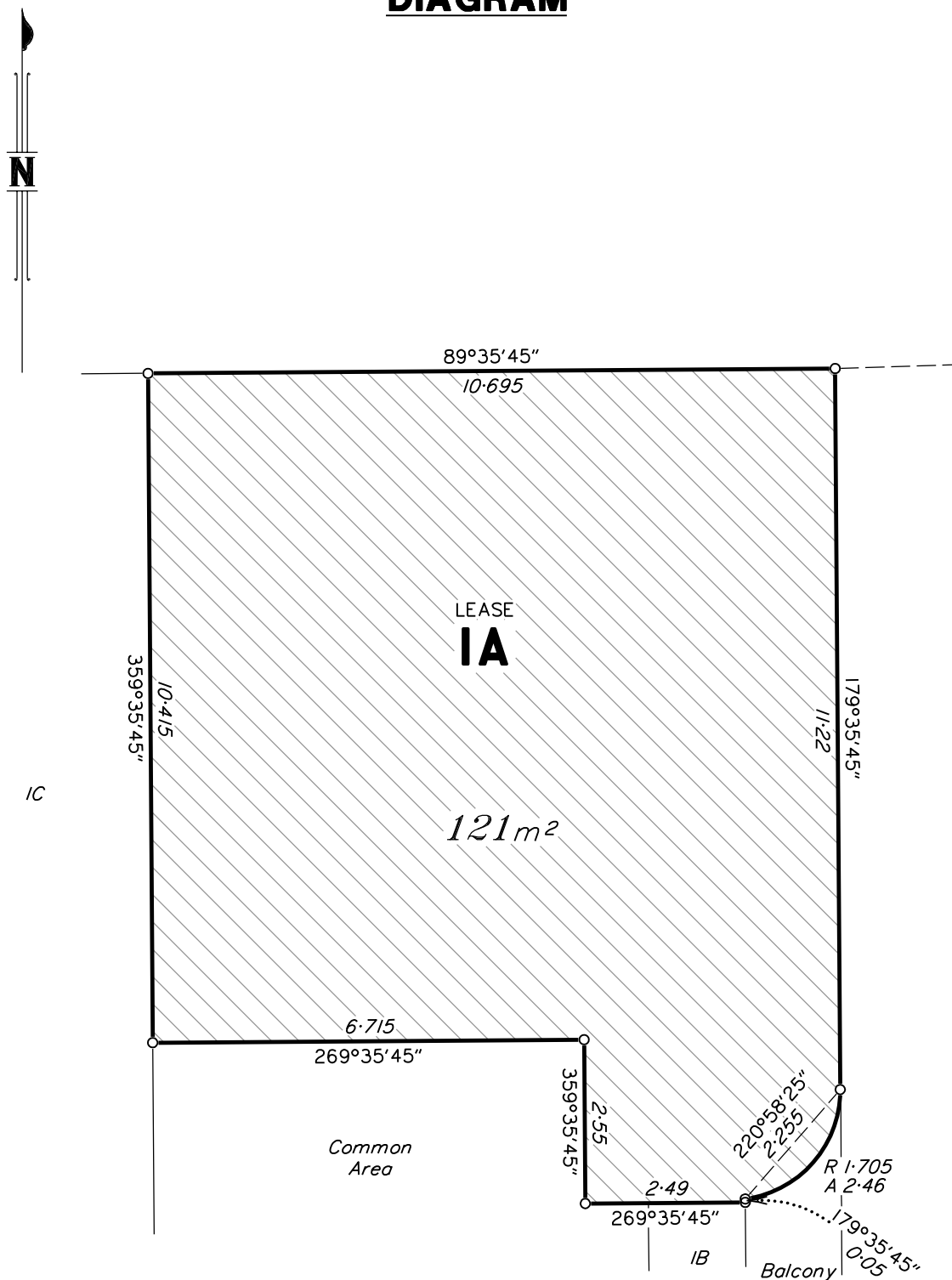
Surveying, Cartography, Computing,
Mapping, Town Planning.
ACN. 053 307 172

35 Peel Street,
South Brisbane. Q.4101,
Phone (07) 3239 5444
<http://www.bfsurveys.com.au>

Drawn BD	Date 28/10/08
F.W. BD	F.B. 08-012
File 02262201	Checked JRW
Scale A4	Approved JRW
Plan Ref. 022622.01	

TITLE REFERENCE
17028203

DIAGRAM



Tenancy measured in accordance with Net Lettable Area – Office Buildings (NLA) as defined in Property Council of Australia Limited March 1997 Method of Measurement.