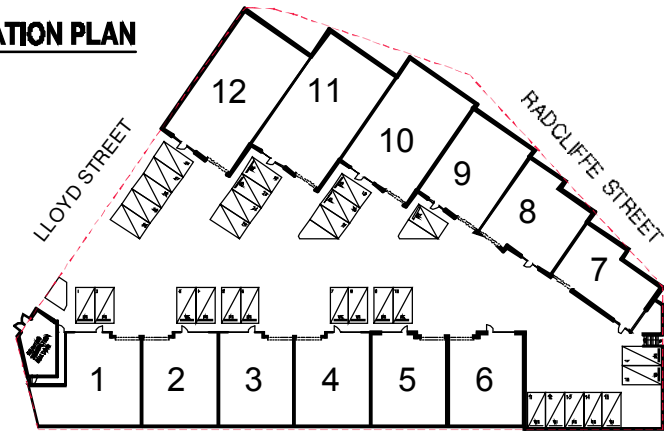


LOCATION PLAN

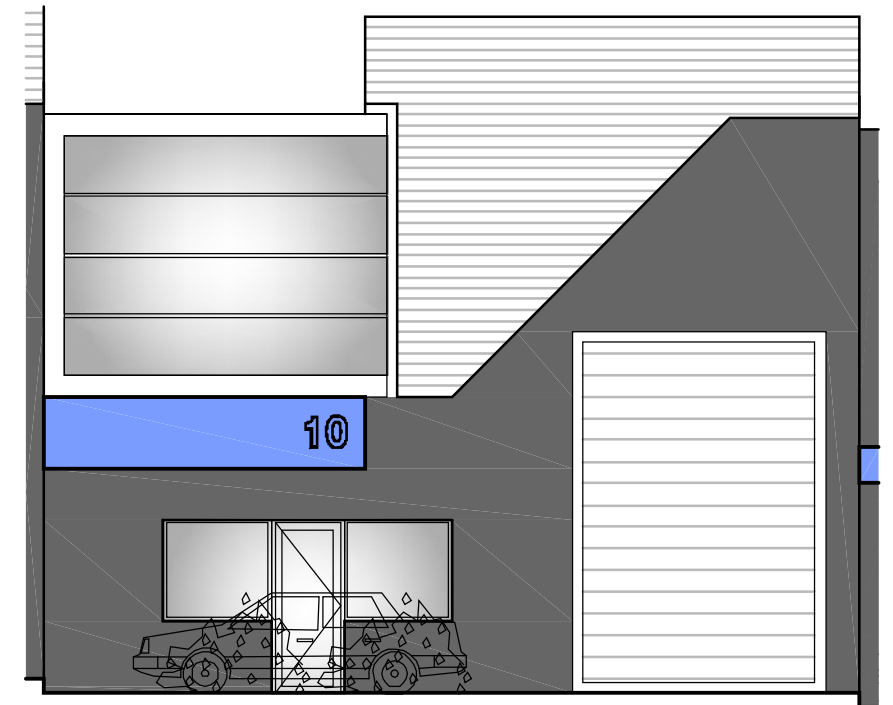


LOT 10 - SUMMARY

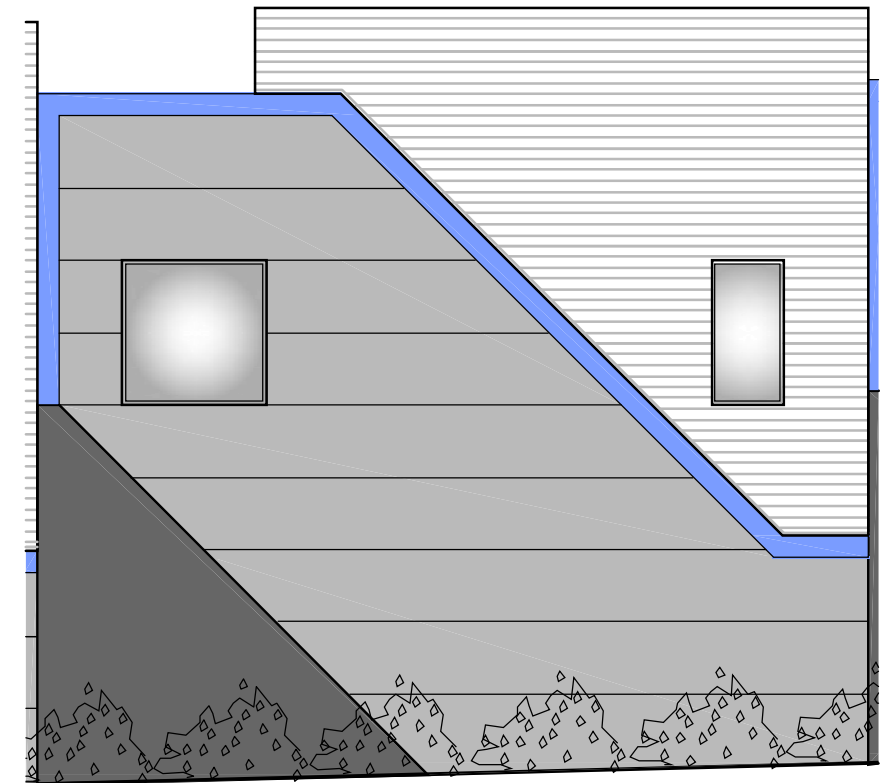
GROUND FLOOR LEVEL= 197m²
 FIRST FLOOR LEVEL= 56m²
 TOTAL= 263m²
 CAR SPACES= 3

SANITARY FITTINGS:

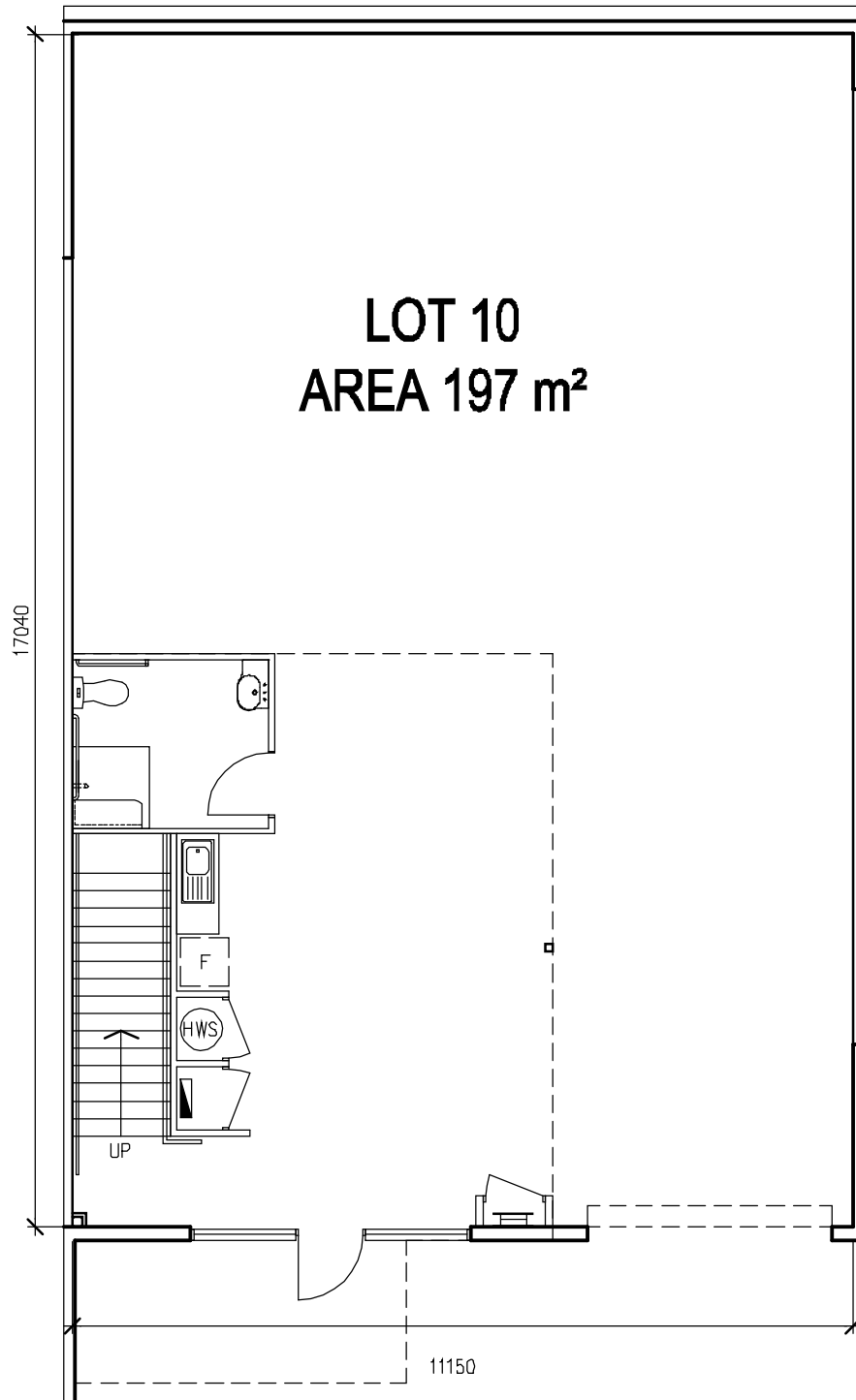
- TOILET SUITE CAROMA D/A
- WALL HUNG BASIN D/A
- SHOWER SEAT D/A



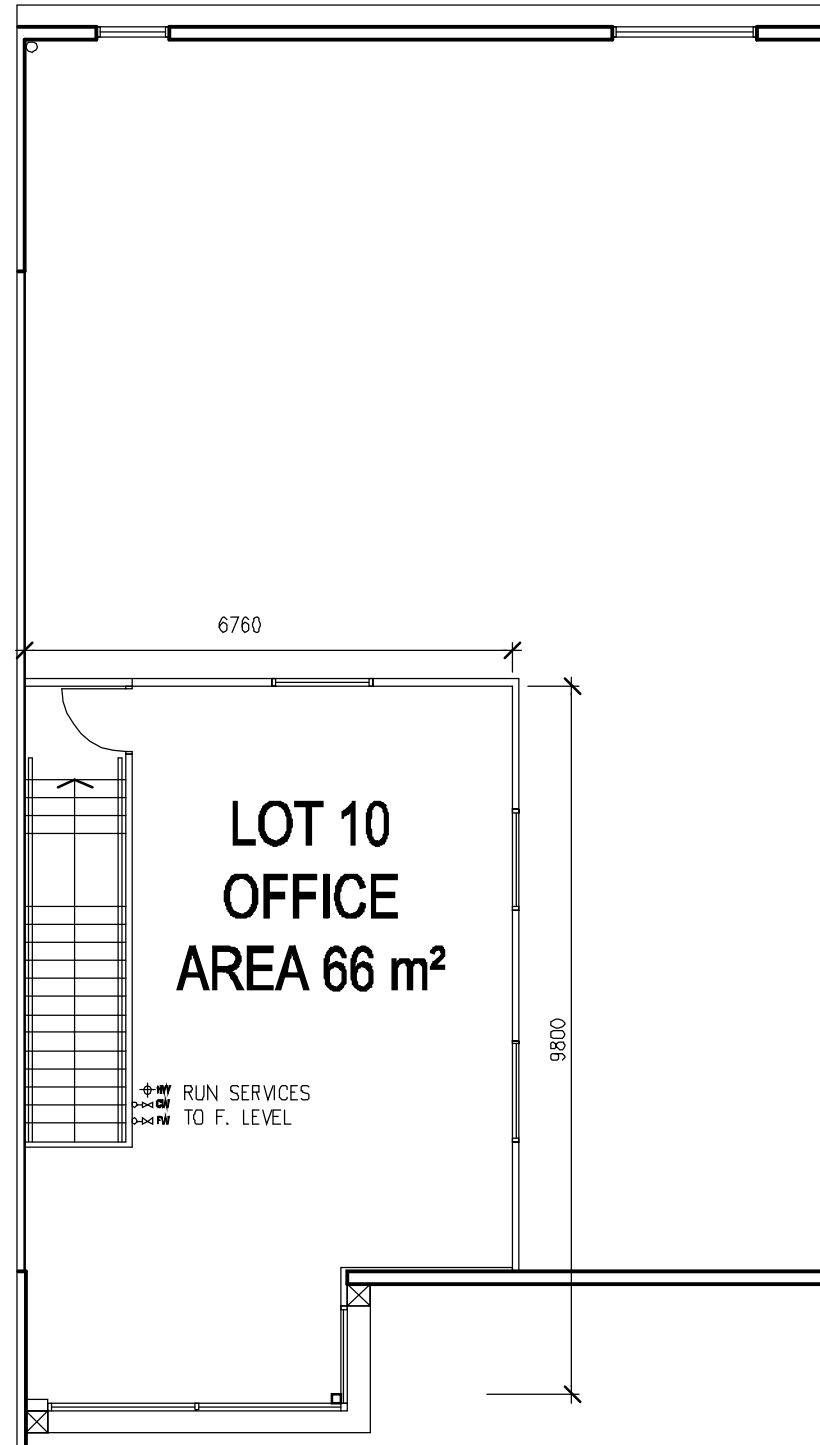
FRONT ELEVATION



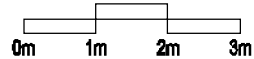
REAR ELEVATION



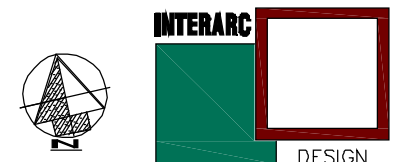
GROUND FLOOR PLAN



FIRST FLOOR PLAN



All plans, dimensions and particulars herein whether by measurement or visual representation are for general information only and do not constitute any representation by the Vendor or by its Agent or Representative. No warranty is given either expressly or implied and all interested parties should not rely on the information contained herein.



7 LLOYD STREET WEST MELBOURNE