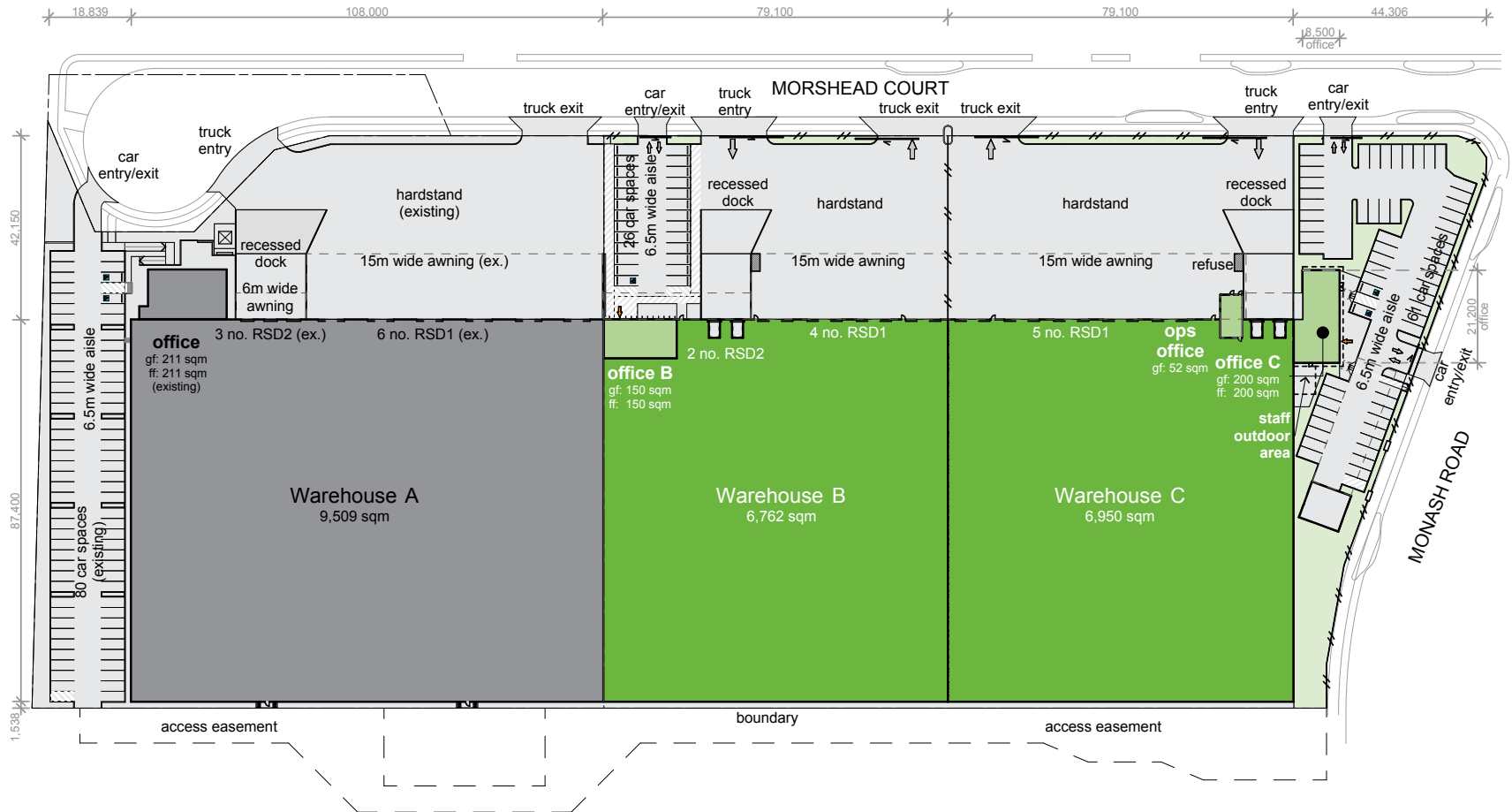


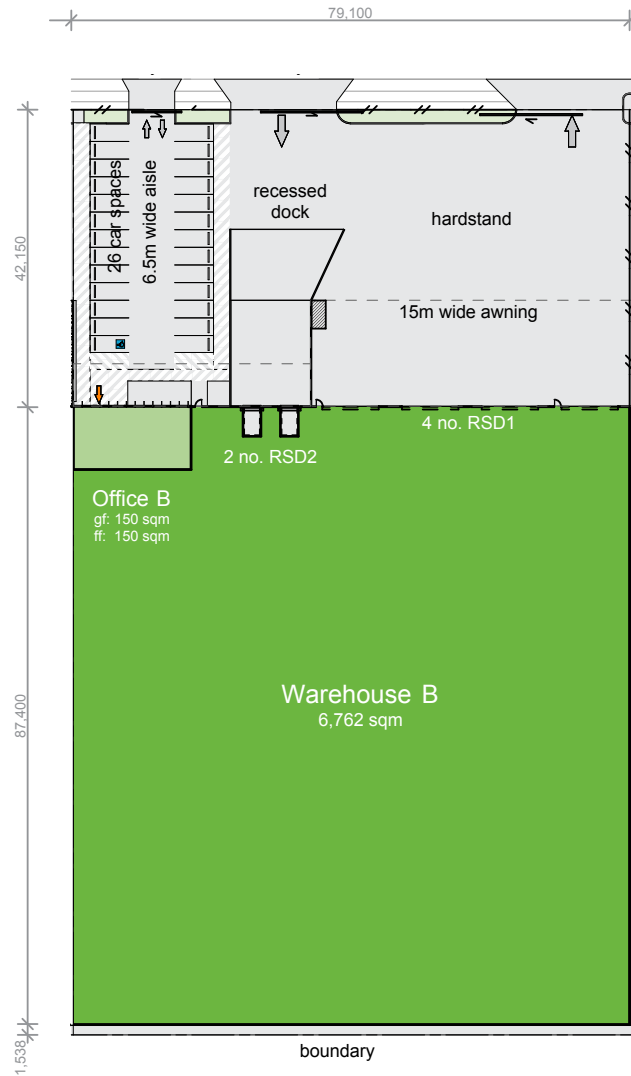
# OPTION 1 – SITE PLAN

AREA SCHEDULE	SQM
Warehouse B	6,762
Office ground floor	150
Office first floor	150
<b>Total</b>	<b>7,062</b>
Warehouse C	6,950
Office ground floor	200
Office first floor	200
Dock office area	52
<b>Total</b>	<b>7,402</b>
<b>Total building area</b>	<b>14,464</b>
Car parking	72 spaces



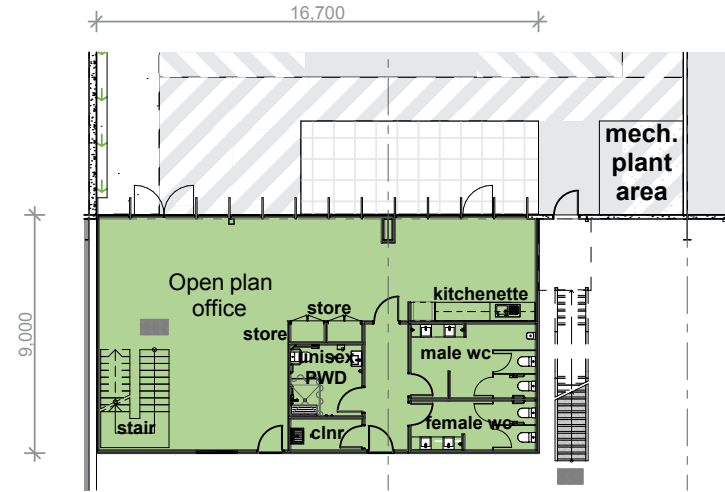
# OPTION 1 – WAREHOUSE B PLAN

AREA SCHEDULE	SQM
Warehouse B	6,762
Office B ground floor	150
Office B first floor	150
<b>Total</b>	<b>7,062</b>

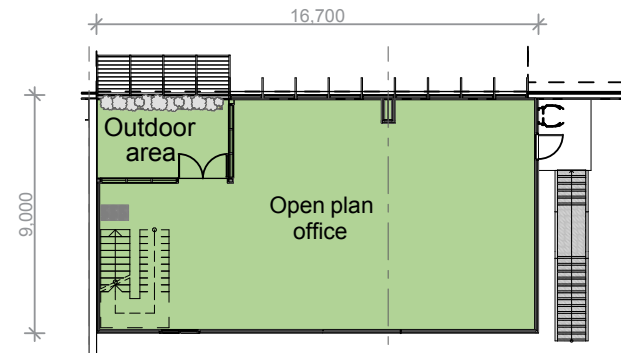


Warehouse B – Tenancy layout

■ FOR LEASE



Ground floor – Office B



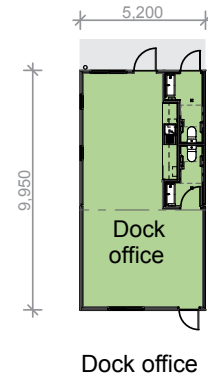
First floor – Office B

# OPTION 1 – WAREHOUSE C PLAN

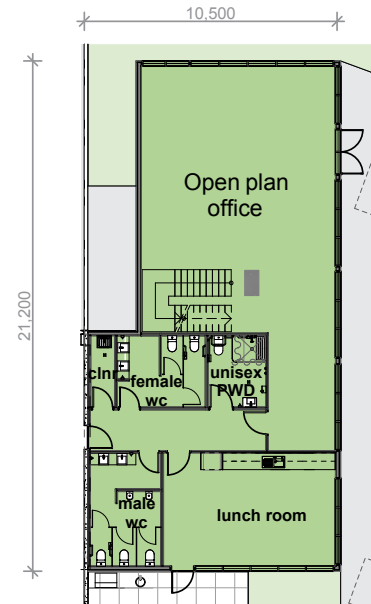
AREA SCHEDULE	SQM
Warehouse C	6,950
Office C ground floor	200
Office C first floor	200
Dock office area	52
<b>Total</b>	<b>7,402</b>



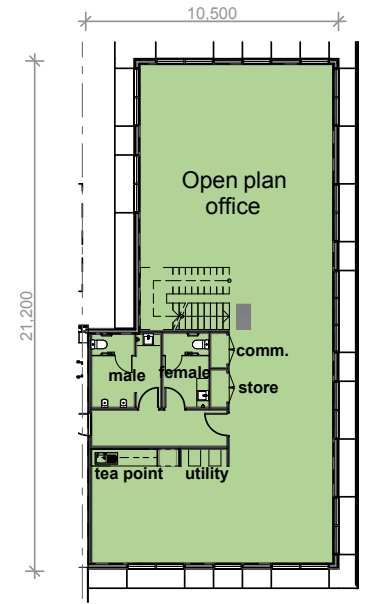
Warehouse C – Tenancy layout



Dock office



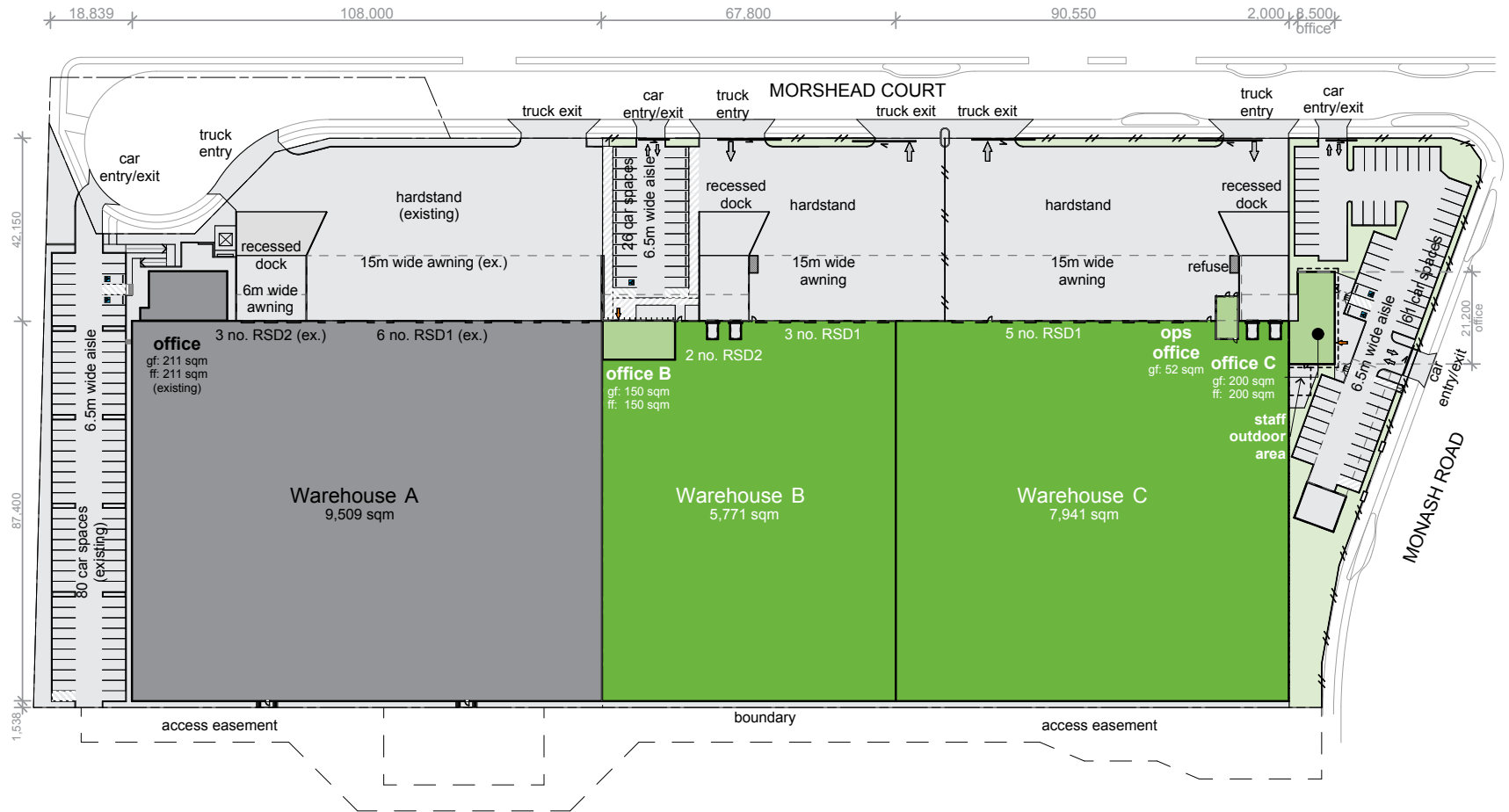
Ground floor – Office C



First floor – Office C

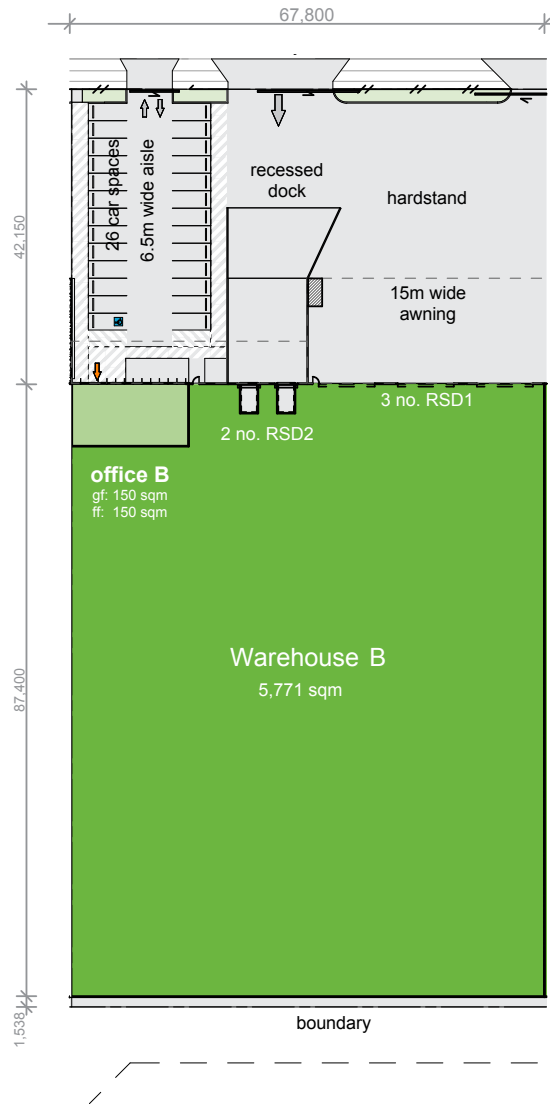
# OPTION 2 – SITE PLAN

AREA SCHEDULE	SQM
Warehouse B	5,771
Office ground floor	150
Office first floor	150
<b>Total</b>	<b>6,071</b>
Warehouse C	7,941
Office ground floor	200
Office first floor	200
Dock office area	52
<b>Total</b>	<b>8,393</b>
<b>Total building area</b>	<b>14,464</b>
Car parking	122 spaces



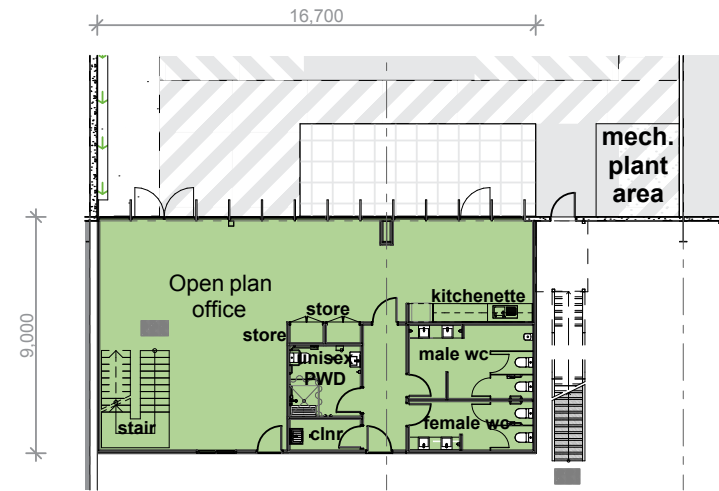
# OPTION 2 – WAREHOUSE B PLAN

AREA SCHEDULE	SQM
Warehouse B	5,771
Office B ground floor	150
Office B first floor	150
<b>Total</b>	<b>6,071</b>

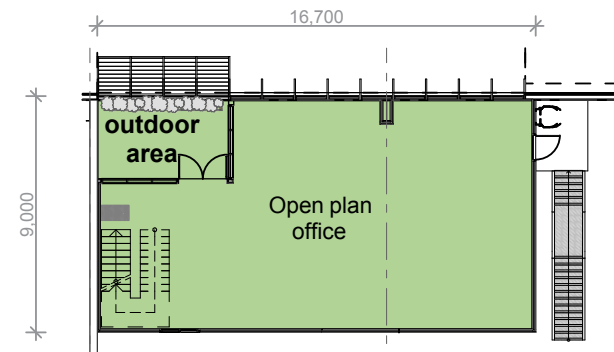


Warehouse B – Tenancy layout

■ FOR LEASE



Ground floor – Office B



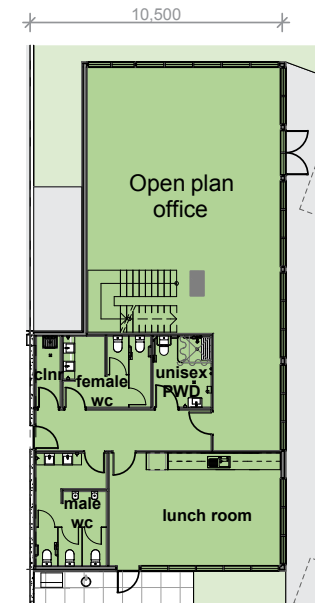
First floor – Office B

# OPTION 2 – WAREHOUSE C PLAN

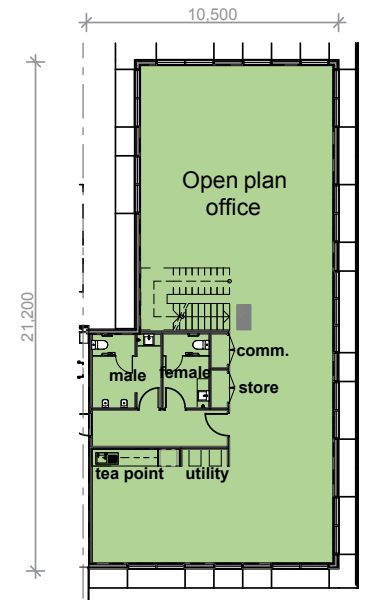
AREA SCHEDULE	SQM
Warehouse C	7,941
Office C ground floor	200
Office C first floor	200
Dock office area	52
<b>Total</b>	<b>8,393</b>



Warehouse C – Tenancy layout



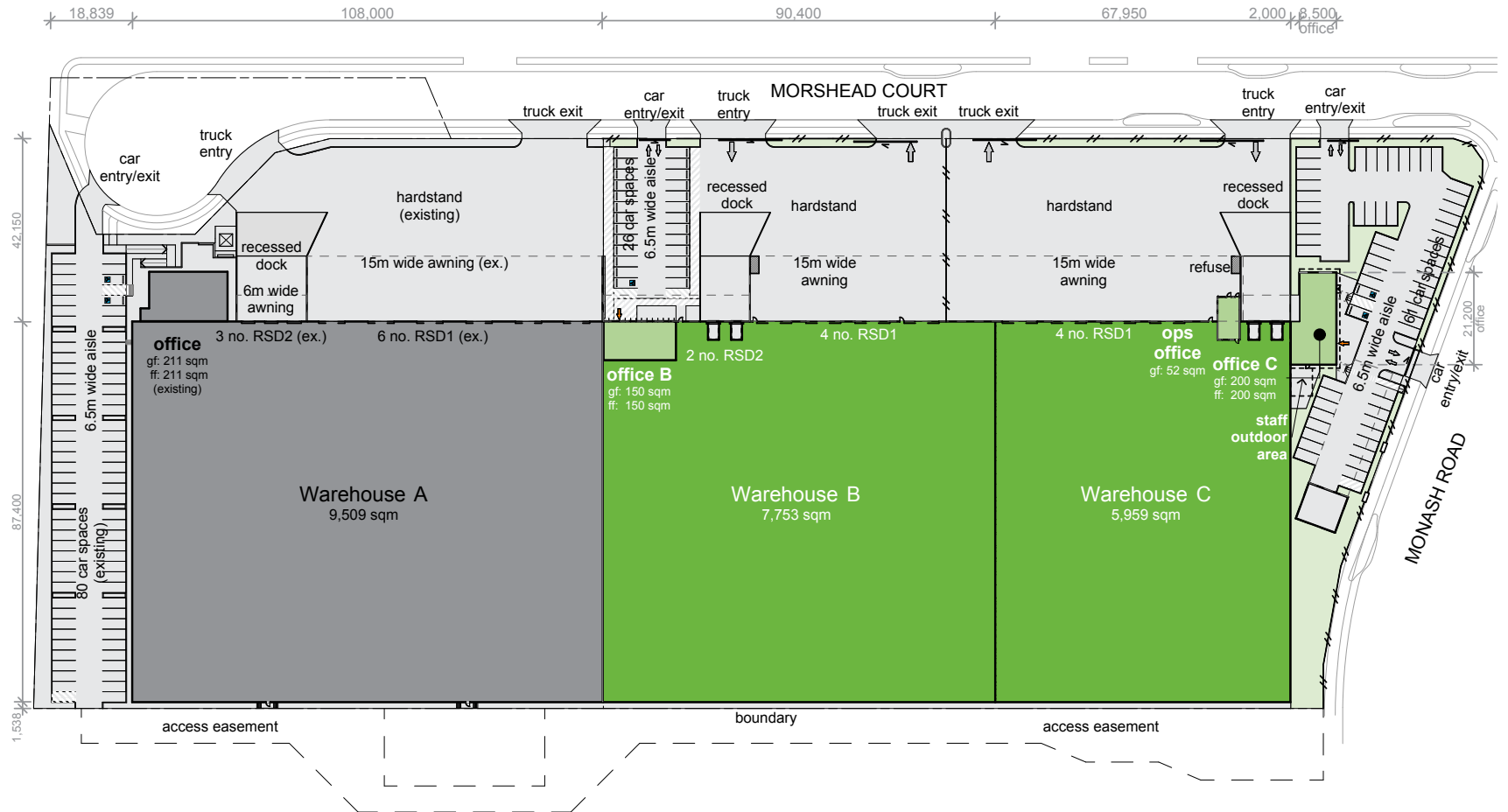
Ground floor – Office C



First floor – Office C

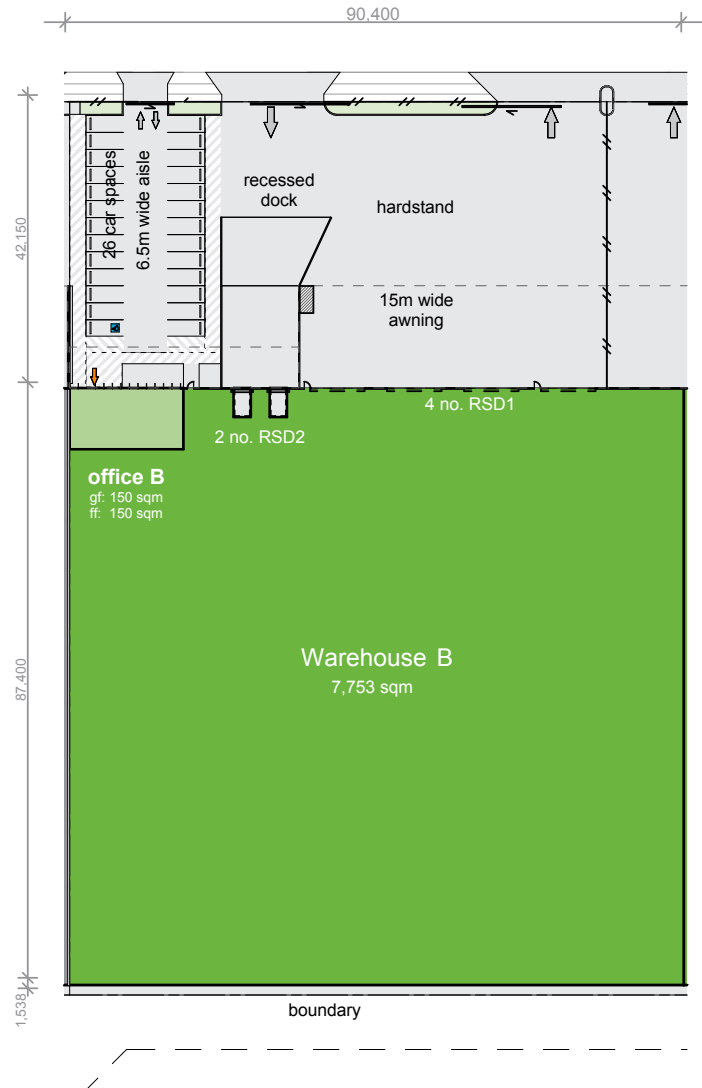
# OPTION 3 – SITE PLAN

AREA SCHEDULE	SQM
Warehouse B	7,753
Office ground floor	150
Office first floor	150
<b>Total</b>	<b>8,053</b>
Warehouse C	5,959
Office ground floor	200
Office first floor	200
Dock office area	52
<b>Total</b>	<b>6,411</b>
<b>Total building area</b>	<b>14,464</b>
Car parking	122 spaces



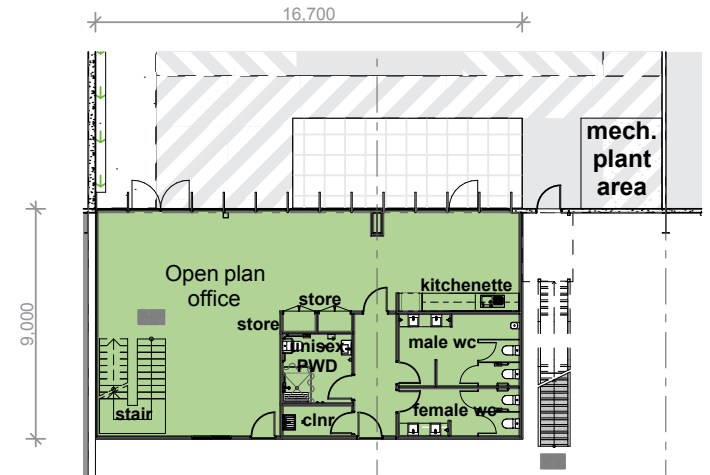
# OPTION 3 – WAREHOUSE B PLAN

AREA SCHEDULE	SQM
Warehouse B	7,753
Office B ground floor	150
Office B first floor	150
<b>Total</b>	<b>8,053</b>

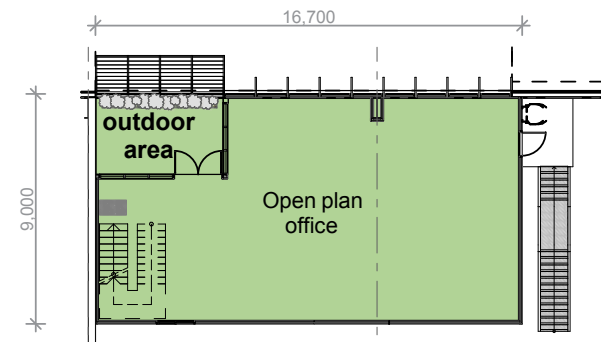


Warehouse B – Tenancy layout

■ FOR LEASE



Ground floor – Office B



First floor – Office B

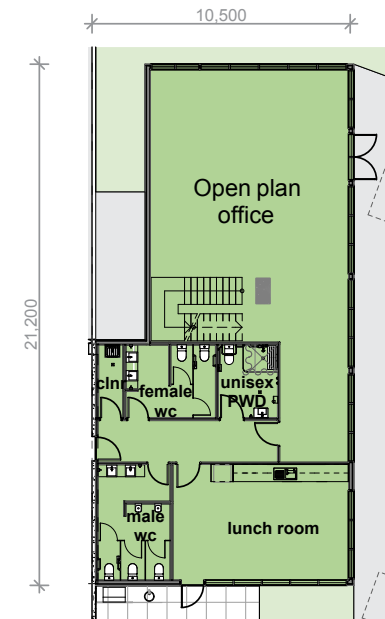
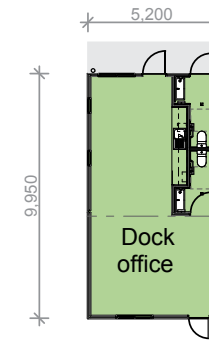


# OPTION 3 – WAREHOUSE C PLAN

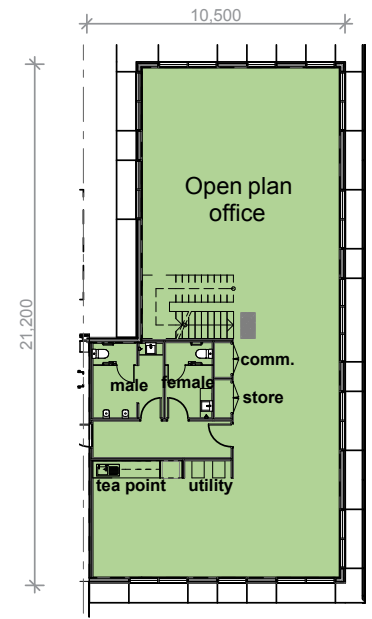
AREA SCHEDULE	SQM
Warehouse C	5,959
Office C ground floor	200
Office C first floor	200
Dock office area	52
<b>Total</b>	<b>6,411</b>



Warehouse C – Tenancy layout



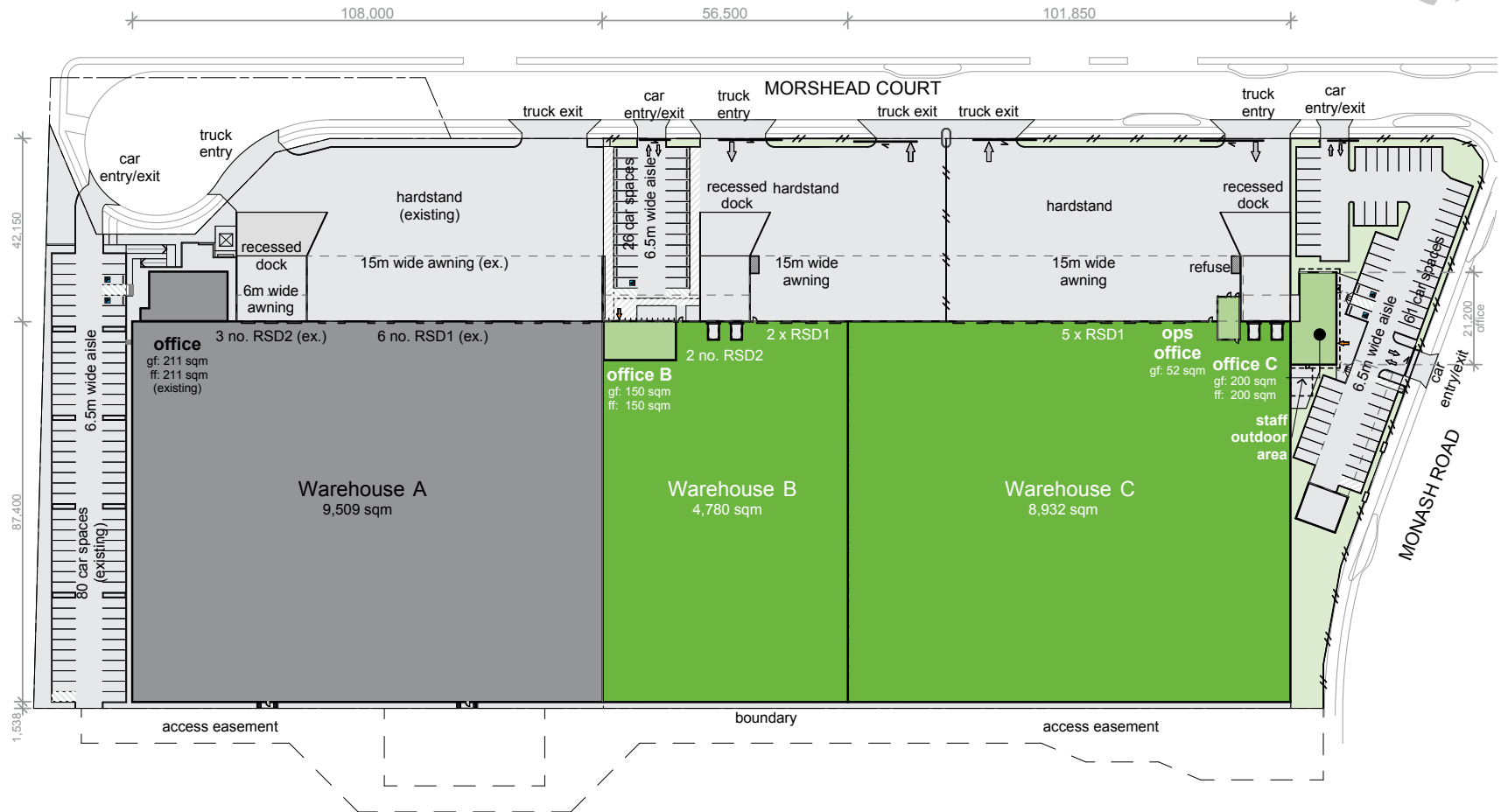
Ground floor – Office C



First floor – Office C

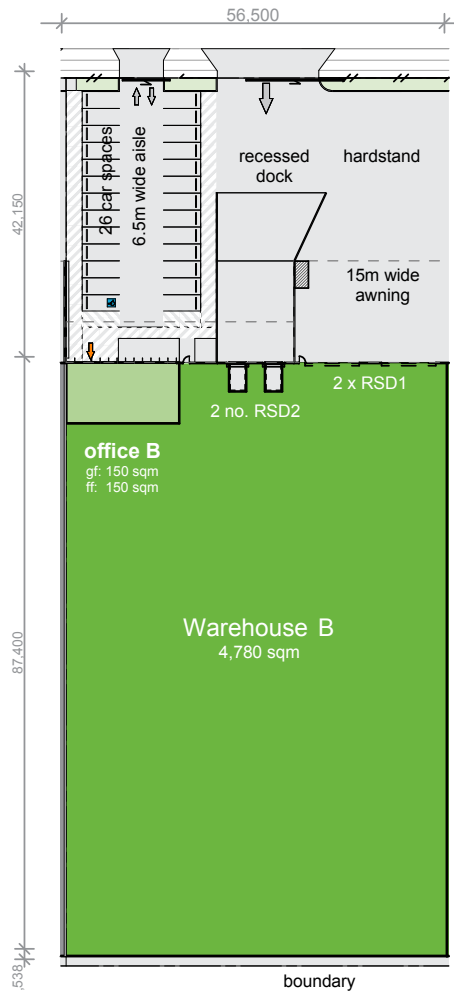
# OPTION 4 – SITE PLAN

AREA SCHEDULE	SQM
Warehouse B	4,780
Office ground floor	150
Office first floor	150
<b>Total</b>	<b>5,080</b>
Warehouse C	8,932
Office ground floor	200
Office first floor	200
Dock office area	52
<b>Total</b>	<b>9,384</b>
<b>Total building area</b>	<b>14,464</b>
Car parking	122 spaces



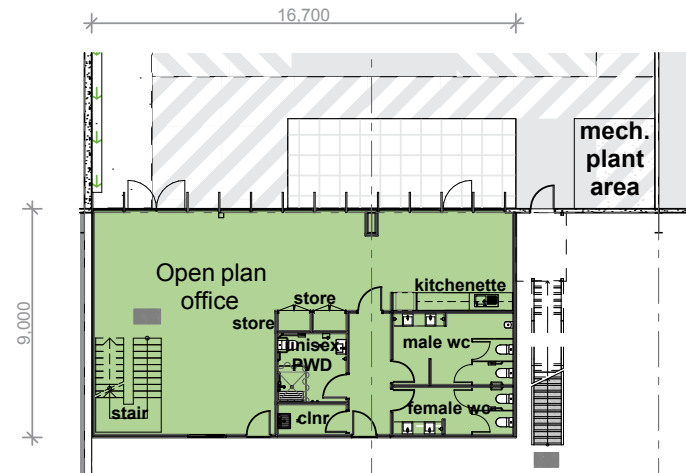
# OPTION 4 – WAREHOUSE B PLAN

AREA SCHEDULE	SQM
Warehouse B	4,780
Office B ground floor	150
Office B first floor	150
<b>Total</b>	<b>5,080</b>

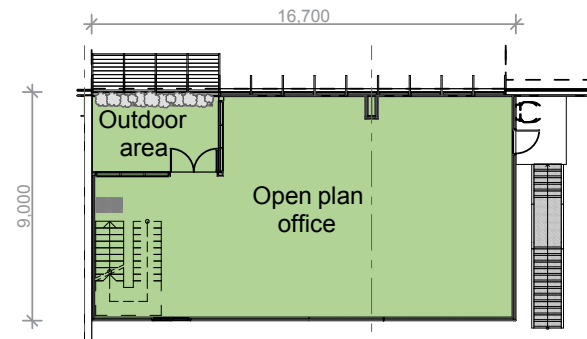


Warehouse B – Tenancy layout

■ FOR LEASE



Ground floor – Office B



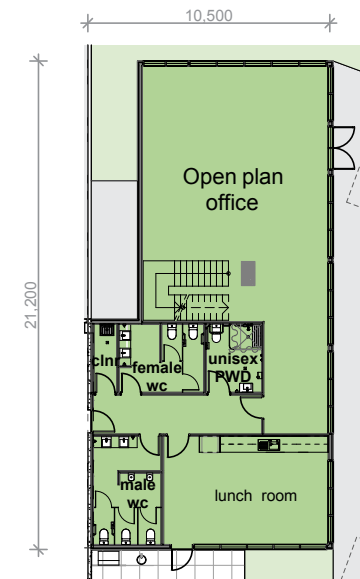
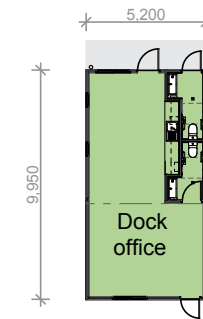
First floor – Office B

# OPTION 4 – WAREHOUSE C PLAN

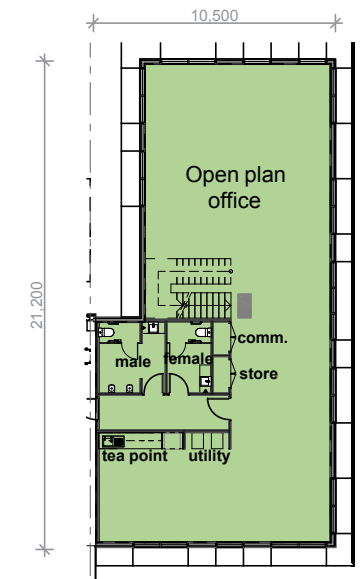
AREA SCHEDULE	SQM
Warehouse C	8,932
Office C ground floor	200
Office C first floor	200
Dock office area	52
<b>Total</b>	<b>9,384</b>



Warehouse C – Tenancy layout



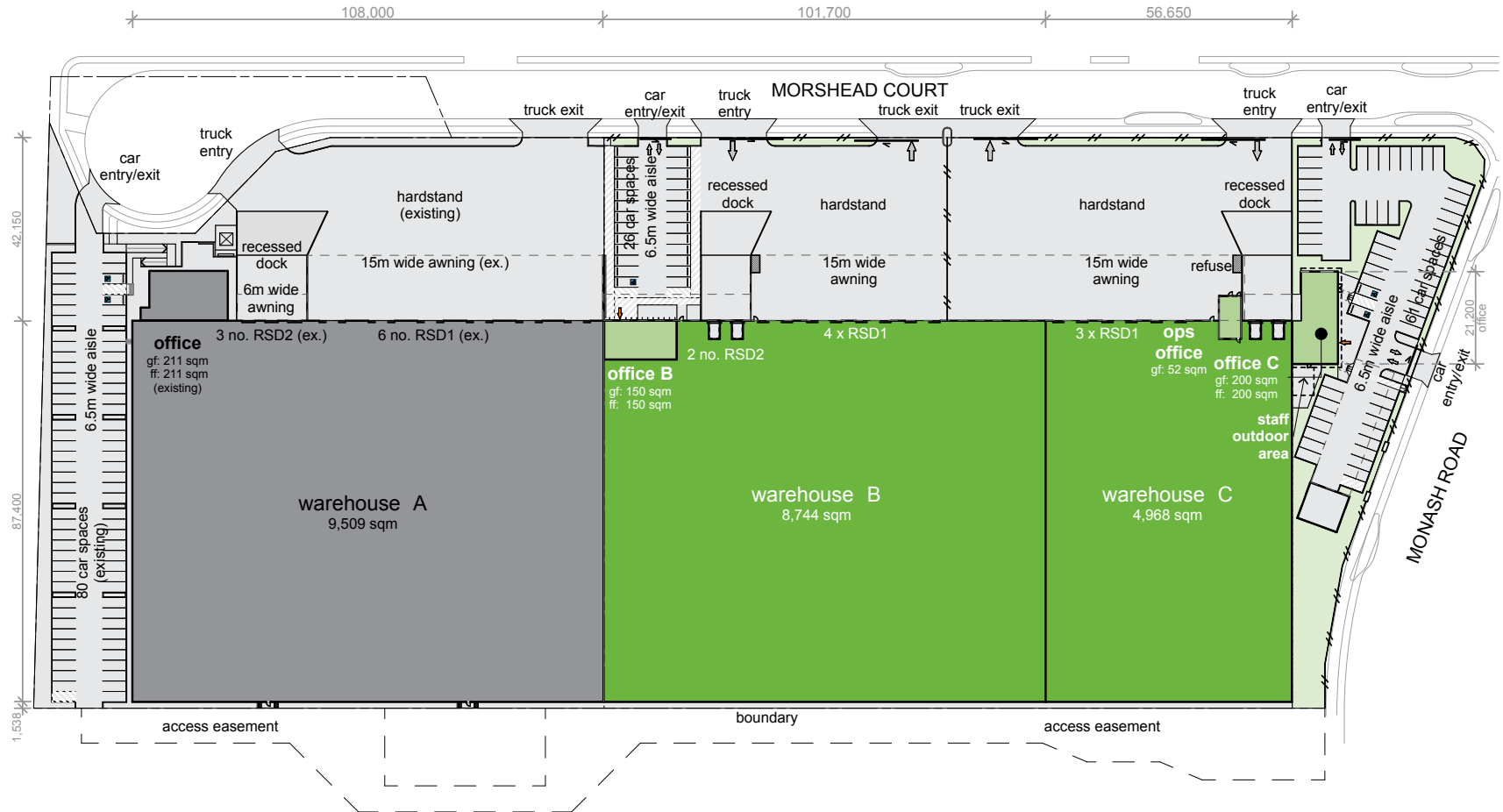
Ground floor – Office C



First floor – Office C

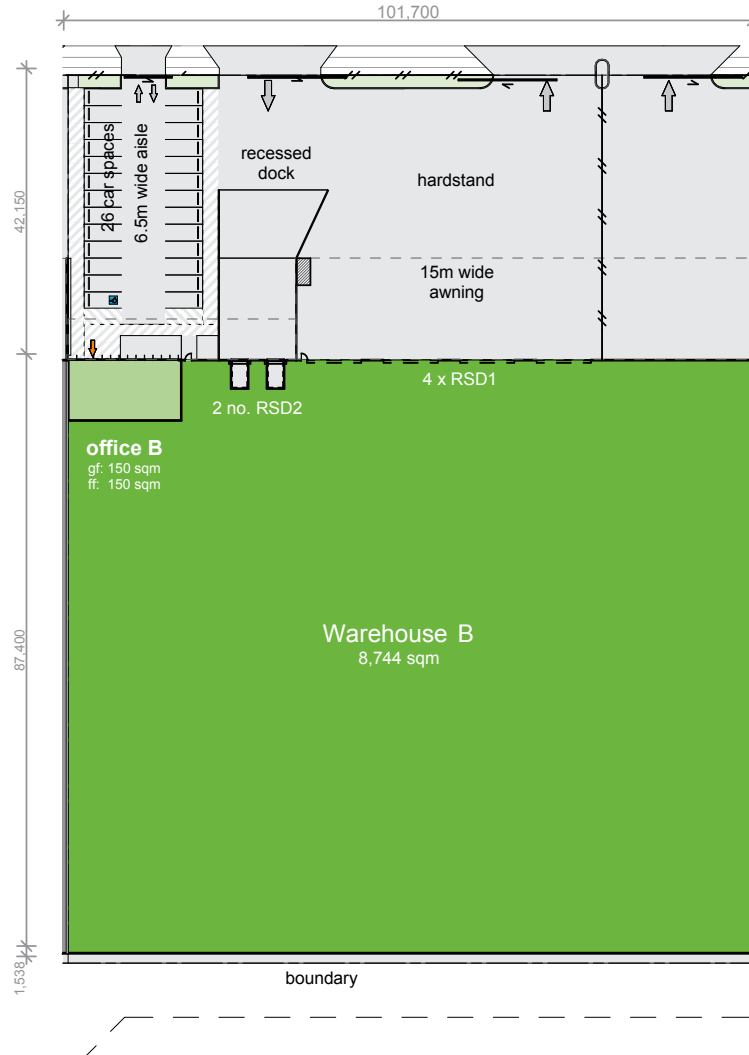
# OPTION 5 – SITE PLAN

AREA SCHEDULE	SQM
Warehouse B	8,744
Office ground floor	150
Office first floor	150
<b>Total</b>	<b>9,044</b>
Warehouse C	4,968
Office ground floor	200
Office first floor	200
Dock office area	52
<b>Total</b>	<b>5,420</b>
<b>Total building area</b>	<b>14,464</b>
Car parking	122 spaces



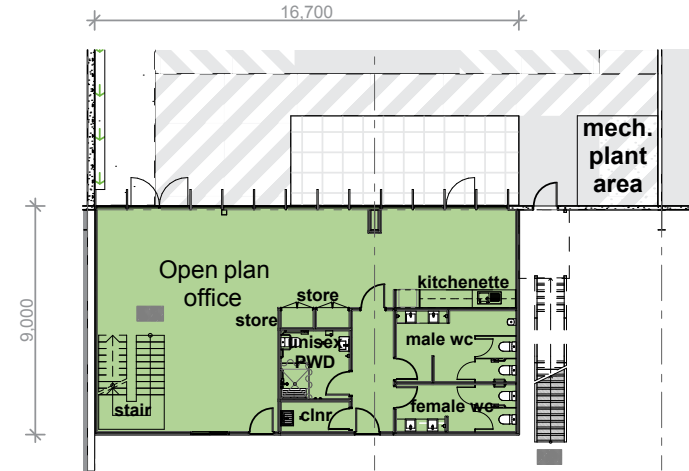
# OPTION 5 – WAREHOUSE B PLAN

AREA SCHEDULE	SQM
Warehouse B	8,744
Office B ground floor	150
Office B first floor	150
<b>Total</b>	<b>9,044</b>

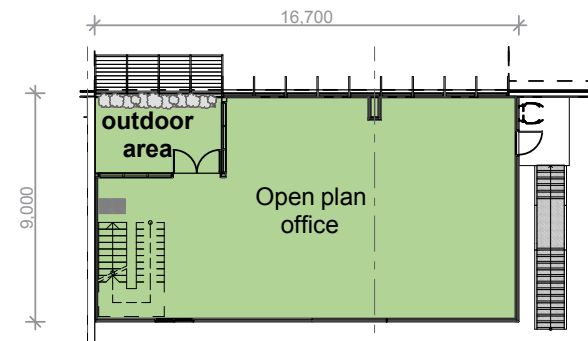


■ FOR LEASE

Warehouse B – Tenancy layout



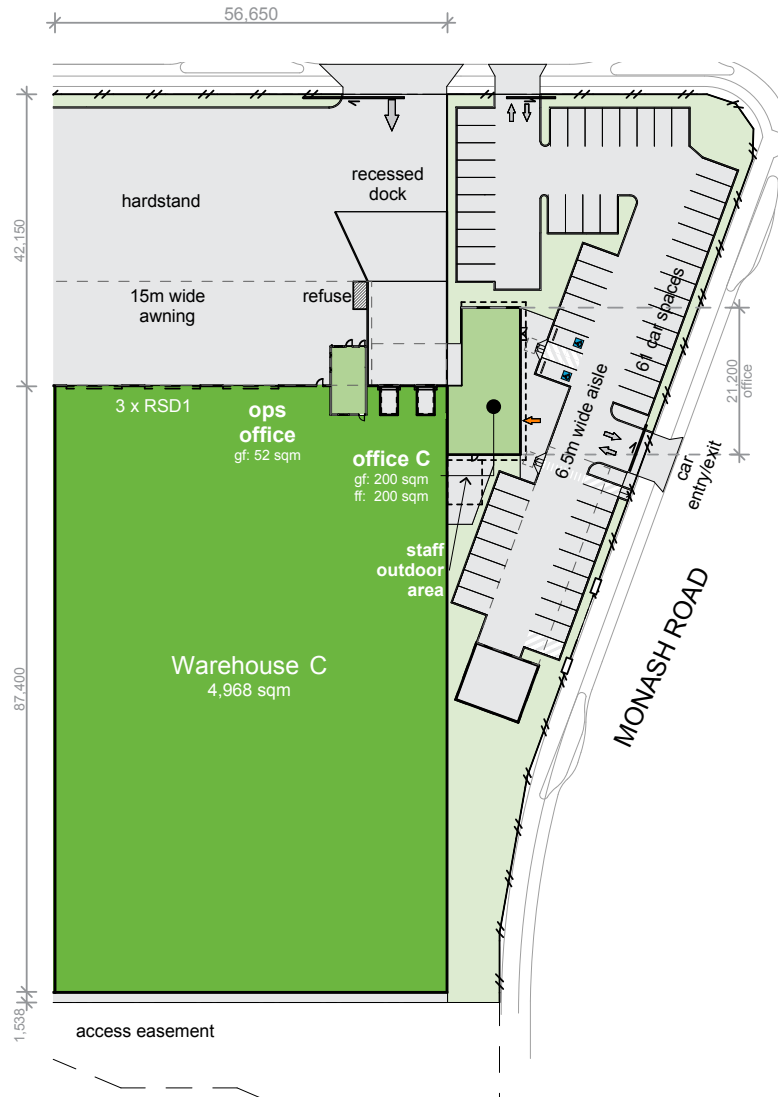
Ground floor – Office B



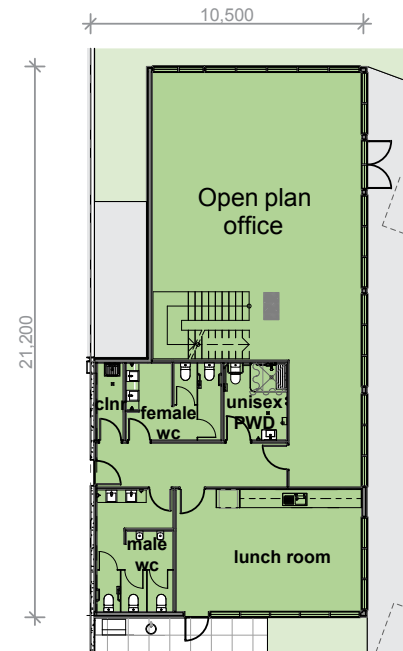
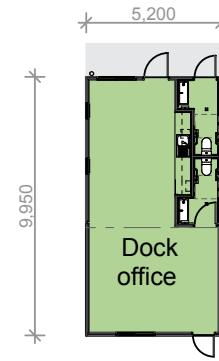
First floor – Office B

# OPTION 5 – WAREHOUSE C PLAN

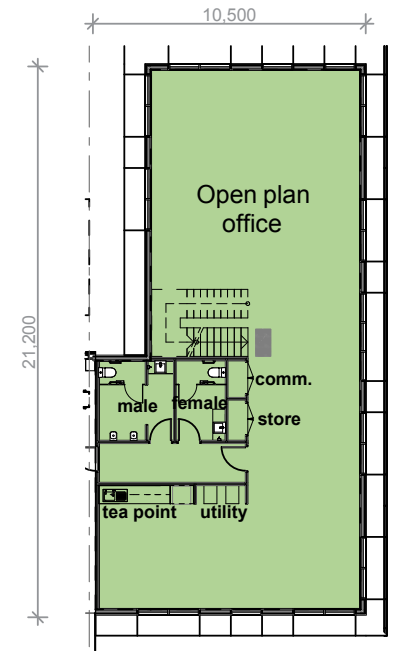
AREA SCHEDULE	SQM
Warehouse C	4,968
Office C ground floor	200
Office C first floor	200
Dock office area	52
<b>Total</b>	<b>5,420</b>



Warehouse C – Tenancy layout



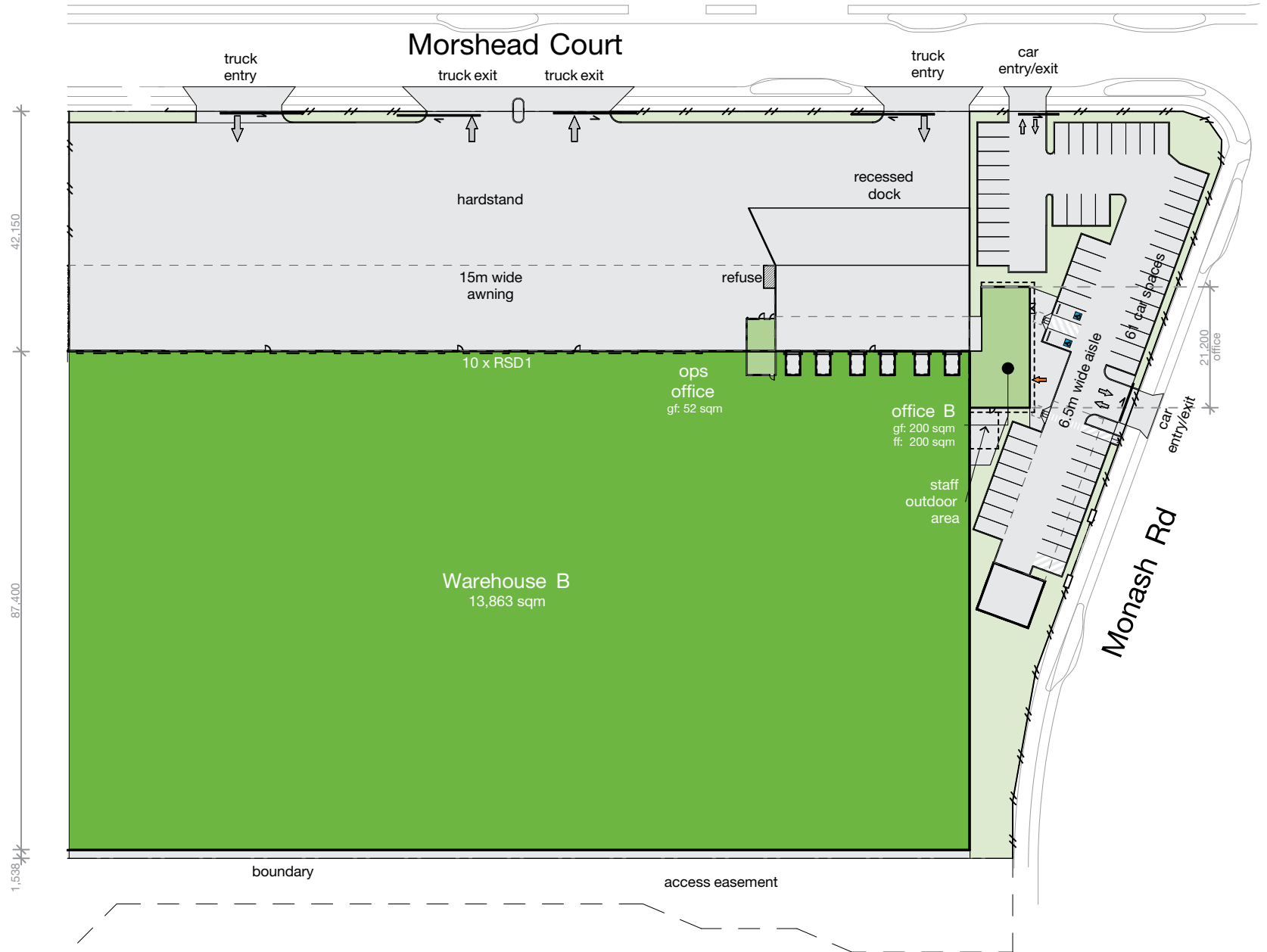
Ground floor – Office C



First floor – Office C

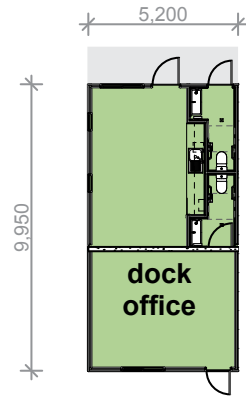


AREA SCHEDULE	SQM
Warehouse B	13,863
Office B ground floor	200
Office B first floor	200
Dock office area	52
<b>Total</b>	<b>14,315</b>

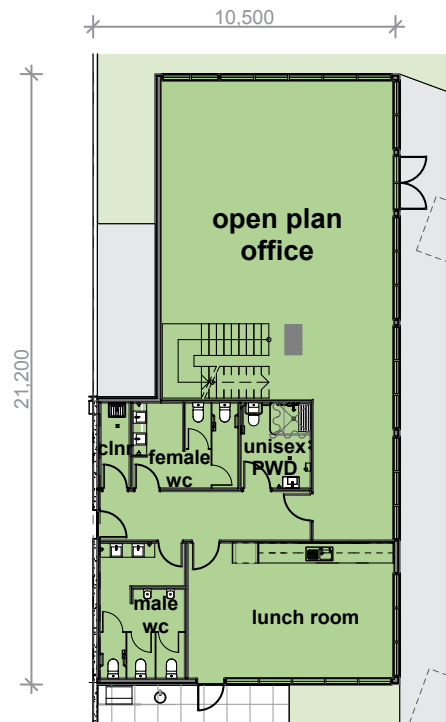




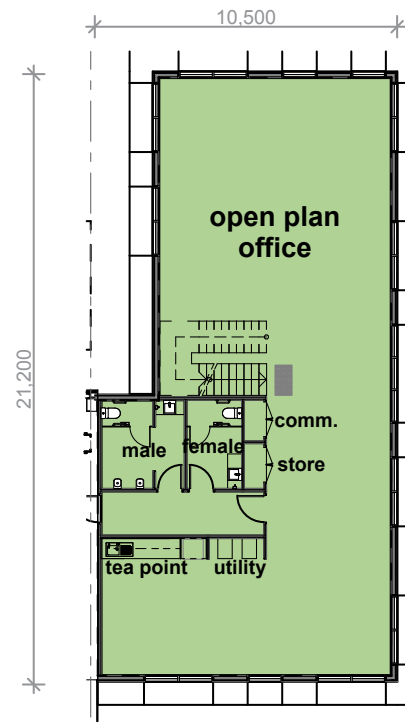
AREA SCHEDULE	SQM
Office B ground floor	200
Office B first floor	200
Dock office area	52
<b>Total</b>	<b>452</b>



3 dock office  
SCALE 1:200



4 ground floor - office B  
SCALE 1:200



5 first floor - office B  
SCALE 1:200