

SIGNATURES, AND SEALS ONLY

THE COMMON SEAL OF AUSTRALIAN TIMBER INDUSTRIES PTY LIMITED AS AT 77 099 111 710 IS BY AFFIXED BY AUTHORITY OF THE DIRECTOR IN THE MANNER OR



ANDREW ASHLEY HARRISON DIRECTOR

DAMAN UJAL MUNDHARATHI SECRETARY

Mortgage under Mortgage No. 876639-4 Signed at Sydney 19th day of March 2005 for National Australia Bank Limited ABN 12 004 044 937 by Fiona Ferguson its duly appointed Attorney under Power of Attorney No. 549 Book 3824

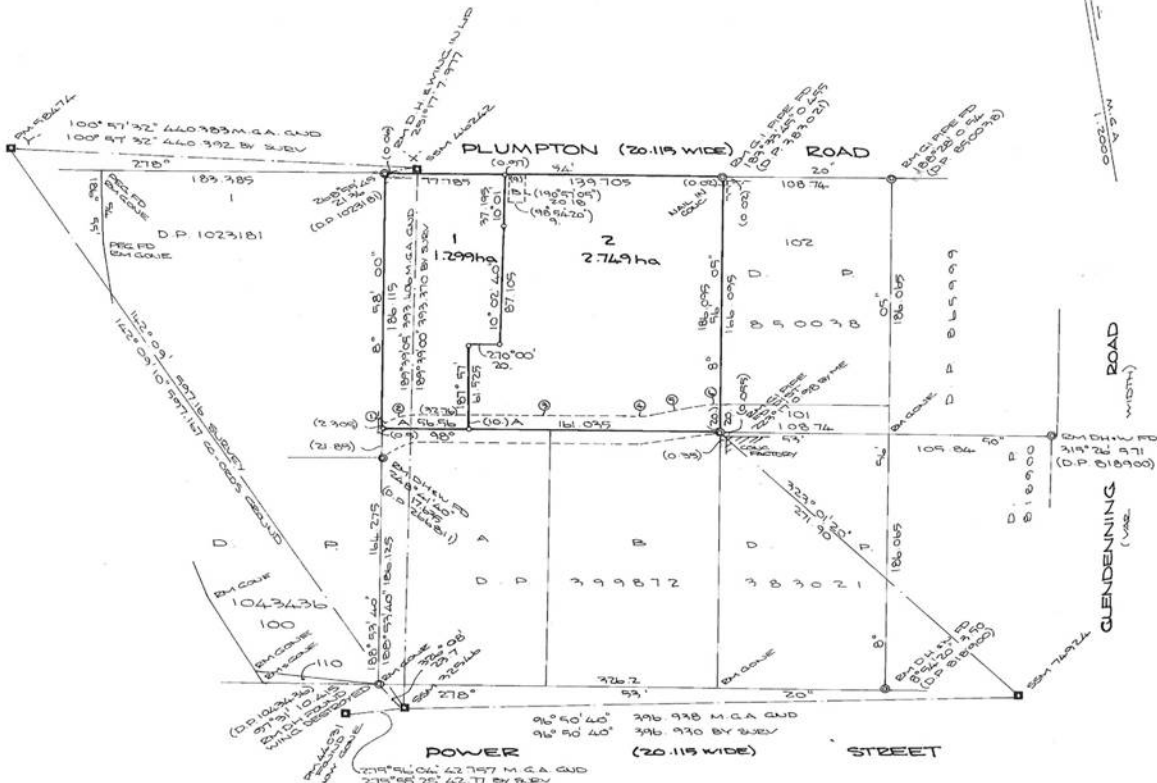
Marginalia: *Fiona Ferguson*  
 Geraldine L. Miguel  
 24 George Street, Sydney NSW

Department of Lands Approval

Signature: \_\_\_\_\_ Date: \_\_\_\_\_ File Number: \_\_\_\_\_ Office: \_\_\_\_\_

Subdivision Certificate

I certify that the provisions of s 1093 of the Environmental Planning and Assessment Act 1973 have been satisfied in relation to the proposed 1 subdivision of 1 lot set out herein.  
 'Special' subdivision or 'Special' subdivision  
 'Authorised Person/Personal Manager/Authorised Certifier'  
 on behalf of Blacktown City Council  
 Date of Endorsement: 11th March 2005  
 Condition No: N/A  
 Subdivision Certificate No: 115473  
 In no. DA-04-1254  
 Delete whichever is inapplicable  
 Condition No: 1254 of B & OA



- ① 66°47'50" 1.26
- ② CH 81°40'50" 23.495 ARC 23 809 RAD 40
- ③ 98° 53' 50" 139.863
- ④ CH 92°24'10" 20.995 ARC 20 40 RAD 90
- ⑤ 85°54'40" 34.255
- ⑥ 98°53'40" 6.50

- A. DRAINAGE EASEMENT 10 WIDE & VARIABLE WIDE D.P. 266728
- B. EASEMENT FOR TRANSMISSION LINE 9. WIDE WIDE D.P. 4919340

SURVEY PRACTICE REGULATIONS 2001 CLAUSE 92 (2)						
M.G.A.		CO-ORDINATES				
MARK	EASTING	NORTHING	ZONE	CLASS	ORDER	
PM 42031	300997.794	126723.898	96	B	2	
PM 42074	300778.899	126723.898	96	B	2	
PM 42075	300640.748	126723.898	96	B	2	
PM 42076	300704.728	126723.898	96	B	2	
PM 42077	300794.408	126723.898	96	B	2	

M.G.A. CO-ORDINATES ADOPTED FROM S.C.I.M.S. JUNE 2004.  
 COMBINED SCALE FACTOR 1.00003

DP1074822  
 Registered: 30-3-2005  
 Title System: TORRENS  
 Purpose: SUBDIVISION  
 Ref Map: U8260-51#  
 Last Plan: DP3115

PLAN OF SUBDIVISION OF LOT 75 D.P. 3115

Lengths are in meters. Reduction Ratio 1:2000

LGA: BLACKTOWN  
 Locality: GLENDENNING  
 Parish: ROOTY HILL  
 County: CUMBERLAND

This is sheet 4 of my plan in (Delete if inapplicable) sheets.

Surveying Regulation, 2001  
 I, Geraldine L. Miguel, a surveyor registered under the Surveying Act, 2002, hereby certify that the survey represented in this plan is accurate, has been made in accordance with the Surveying Regulation, 2001 and was completed on 11th March 2005.  
 The survey relates to:  
 LOT: 1 D.P. 3115  
 (Here specify the land actually surveyed or specify any land shown in the plan that is the subject of the survey)  
 Signature: *Geraldine L. Miguel*  
 Surveyor registered under the Surveying Act, 2002  
 Datum: Low Water  
 Type: Urban / Rural

Plans used in preparation of Survey/Compilation:  
 D.P. 3115, 266728, 266729, 266730, 266731, 266732, 266733, 266734, 266735, 266736, 266737, 266738, 266739, 266740, 266741, 266742, 266743, 266744, 266745, 266746, 266747, 266748, 266749, 266750, 266751, 266752, 266753, 266754, 266755, 266756, 266757, 266758, 266759, 266760, 266761, 266762, 266763, 266764, 266765, 266766, 266767, 266768, 266769, 266770, 266771, 266772, 266773, 266774, 266775, 266776, 266777, 266778, 266779, 266780, 266781, 266782, 266783, 266784, 266785, 266786, 266787, 266788, 266789, 266790, 266791, 266792, 266793, 266794, 266795, 266796, 266797, 266798, 266799, 266800, 266801, 266802, 266803, 266804, 266805, 266806, 266807, 266808, 266809, 266810, 266811, 266812, 266813, 266814, 266815, 266816, 266817, 266818, 266819, 266820, 266821, 266822, 266823, 266824, 266825, 266826, 266827, 266828, 266829, 266830, 266831, 266832, 266833, 266834, 266835, 266836, 266837, 266838, 266839, 266840, 266841, 266842, 266843, 266844, 266845, 266846, 266847, 266848, 266849, 266850, 266851, 266852, 266853, 266854, 266855, 266856, 266857, 266858, 266859, 266860, 266861, 266862, 266863, 266864, 266865, 266866, 266867, 266868, 266869, 266870, 266871, 266872, 266873, 266874, 266875, 266876, 266877, 266878, 266879, 266880, 266881, 266882, 266883, 266884, 266885, 266886, 266887, 266888, 266889, 266890, 266891, 266892, 266893, 266894, 266895, 266896, 266897, 266898, 266899, 266900, 266901, 266902, 266903, 266904, 266905, 266906, 266907, 266908, 266909, 266910, 266911, 266912, 266913, 266914, 266915, 266916, 266917, 266918, 266919, 266920, 266921, 266922, 266923, 266924, 266925, 266926, 266927, 266928, 266929, 266930, 266931, 266932, 266933, 266934, 266935, 266936, 266937, 266938, 266939, 266940, 266941, 266942, 266943, 266944, 266945, 266946, 266947, 266948, 266949, 266950, 266951, 266952, 266953, 266954, 266955, 266956, 266957, 266958, 266959, 266960, 266961, 266962, 266963, 266964, 266965, 266966, 266967, 266968, 266969, 266970, 266971, 266972, 266973, 266974, 266975, 266976, 266977, 266978, 266979, 266980, 266981, 266982, 266983, 266984, 266985, 266986, 266987, 266988, 266989, 266990, 266991, 266992, 266993, 266994, 266995, 266996, 266997, 266998, 266999, 267000, 267001, 267002, 267003, 267004, 267005, 267006, 267007, 267008, 267009, 267010, 267011, 267012, 267013, 267014, 267015, 267016, 267017, 267018, 267019, 267020, 267021, 267022, 267023, 267024, 267025, 267026, 267027, 267028, 267029, 267030, 267031, 267032, 267033, 267034, 267035, 267036, 267037, 267038, 267039, 267040, 267041, 267042, 267043, 267044, 267045, 267046, 267047, 267048, 267049, 267050, 267051, 267052, 267053, 267054, 267055, 267056, 267057, 267058, 267059, 267060, 267061, 267062, 267063, 267064, 267065, 267066, 267067, 267068, 267069, 267070, 267071, 267072, 267073, 267074, 267075, 267076, 267077, 267078, 267079, 267080, 267081, 267082, 267083, 267084, 267085, 267086, 267087, 267088, 267089, 267090, 267091, 267092, 267093, 267094, 267095, 267096, 267097, 267098, 267099, 267100, 267101, 267102, 267103, 267104, 267105, 267106, 267107, 267108, 267109, 267110, 267111, 267112, 267113, 267114, 267115, 267116, 267117, 267118, 267119, 267120, 267121, 267122, 267123, 267124, 267125, 267126, 267127, 267128, 267129, 267130, 267131, 267132, 267133, 267134, 267135, 267136, 267137, 267138, 267139, 267140, 267141, 267142, 267143, 267144, 267145, 267146, 267147, 267148, 267149, 267150, 267151, 267152, 267153, 267154, 267155, 267156, 267157, 267158, 267159, 267160, 267161, 267162, 267163, 267164, 267165, 267166, 267167, 267168, 267169, 267170, 267171, 267172, 267173, 267174, 267175, 267176, 267177, 267178, 267179, 267180, 267181, 267182, 267183, 267184, 267185, 267186, 267187, 267188, 267189, 267190, 267191, 267192, 267193, 267194, 267195, 267196, 267197, 267198, 267199, 267200, 267201, 267202, 267203, 267204, 267205, 267206, 267207, 267208, 267209, 267210, 267211, 267212, 267213, 267214, 267215, 267216, 267217, 267218, 267219, 267220, 267221, 267222, 267223, 267224, 267225, 267226, 267227, 267228, 267229, 267230, 267231, 267232, 267233, 267234, 267235, 267236, 267237, 267238, 267239, 267240, 267241, 267242, 267243, 267244, 267245, 267246, 267247, 267248, 267249, 267250, 267251, 267252, 267253, 267254, 267255, 267256, 267257, 267258, 267259, 267260, 267261, 267262, 267263, 267264, 267265, 267266, 267267, 267268, 267269, 267270, 267271, 267272, 267273, 267274, 267275, 267276, 267277, 267278, 267279, 267280, 267281, 267282, 267283, 267284, 267285, 267286, 267287, 267288, 267289, 267290, 267291, 267292, 267293, 267294, 267295, 267296, 267297, 267298, 267299, 267300, 267301, 267302, 267303, 267304, 267305, 267306, 267307, 267308, 267309, 267310, 267311, 267312, 267313, 267314, 267315, 267316, 267317, 267318, 267319, 267320, 267321, 267322, 267323, 267324, 267325, 267326, 267327, 267328, 267329, 267330, 267331, 267332, 267333, 267334, 267335, 267336, 267337, 267338, 267339, 267340, 267341, 267342, 267343, 267344, 267345, 267346, 267347, 267348, 267349, 267350, 267351, 267352, 267353, 267354, 267355, 267356, 267357, 267358, 267359, 267360, 267361, 267362, 267363, 267364, 267365, 267366, 267367, 267368, 267369, 267370, 267371, 267372, 267373, 267374, 267375, 267376, 267377, 267378, 267379, 267380, 267381, 267382, 267383, 267384, 267385, 267386, 267387, 267388, 267389, 267390, 267391, 267392, 267393, 267394, 267395, 267396, 267397, 267398, 267399, 267400, 267401, 267402, 267403, 267404, 267405, 267406, 267407, 267408, 267409, 267410, 267411, 267412, 267413, 267414, 267415, 267416, 267417, 267418, 267419, 267420, 267421, 267422, 267423, 267424, 267425, 267426, 267427, 267428, 267429, 267430, 267431, 267432, 267433, 267434, 267435, 267436, 267437, 267438, 267439, 267440, 267441, 267442, 267443, 267444, 267445, 267446, 267447, 267448, 267449, 267450, 267451, 267452, 267453, 267454, 267455, 267456, 267457, 267458, 267459, 267460, 267461, 267462, 267463, 267464, 267465, 267466, 267467, 267468, 267469, 267470, 267471, 267472, 267473, 267474, 267475, 267476, 267477, 267478, 267479, 267480, 267481, 267482, 267483, 267484, 267485, 267486, 267487, 267488, 267489, 267490, 267491, 267492, 267493, 267494, 267495, 267496, 267497, 267498, 267499, 267500, 267501, 267502, 267503, 267504, 267505, 267506, 267507, 267508, 267509, 267510, 267511, 267512, 267513, 267514, 267515, 267516, 267517, 267518, 267519, 267520, 267521, 267522, 267523, 267524, 267525, 267526, 267527, 267528, 267529, 267530, 267531, 267532, 267533, 267534, 267535, 267536, 267537, 267538, 267539, 267540, 267541, 267542, 267543, 267544, 267545, 267546, 267547, 267548, 267549, 267550, 267551, 267552, 267553, 267554, 267555, 267556, 267557, 267558, 267559, 267560, 267561, 267562, 267563, 267564, 267565, 267566, 267567, 267568, 267569, 267570, 267571, 267572, 267573, 267574, 267575, 267576, 267577, 267578, 267579, 267580, 267581, 267582, 267583, 267584, 267585, 267586, 267587, 267588, 267589, 267590, 267591, 267592, 267593, 267594, 267595, 267596, 267597, 267598, 267599, 267600, 267601, 267602, 267603, 267604, 267605, 267606, 267607, 267608, 267609, 267610, 267611, 267612, 267613, 267614, 267615, 267616, 267617, 267618, 267619, 267620, 267621, 267622, 267623, 267624, 267625, 267626, 267627, 267628, 267629, 267630, 267631, 267632, 267633, 267634, 267635, 267636, 267637, 267638, 267639, 267640, 267641, 267642, 267643, 267644, 267645, 267646, 267647, 267648, 267649, 267650, 267651, 267652, 267653, 267654, 267655, 267656, 267657, 267658, 267659, 267660, 267661, 267662, 267663, 267664, 267665, 267666, 267667, 267668, 267669, 267670, 267671, 267672, 267673, 267674, 267675, 267676, 267677, 267678, 267679, 267680, 267681, 267682, 267683, 267684, 267685, 267686, 267687, 267688, 267689, 267690, 267691, 267692, 267693, 267694, 267695, 267696, 267697, 267698, 267699, 267700, 267701, 267702, 267703, 267704, 267705, 267706, 267707, 267708, 267709, 267710, 267711, 267712, 267713, 267714, 267715, 267716, 267717, 267718, 267719, 267720, 267721, 267722, 267723, 267724, 267725, 267726, 267727, 267728, 267729, 267730, 267731, 267732, 267733, 267734, 267735, 267736, 267737, 267738, 267739, 267740, 267741, 267742, 267743, 267744, 267745, 267746, 267747, 267748, 267749, 267750, 267751, 267752, 267753, 267754, 267755, 267756, 267757, 267758, 267759, 267760, 267761, 267762, 267763, 267764, 267765, 267766, 267767, 267768, 267769, 267770, 267771, 267772, 267773, 267774, 267775, 267776, 267777, 267778, 267779, 267780, 267781, 267782, 267783, 267784, 267785, 267786, 267787, 267788, 267789, 267790, 267791, 267792, 267793, 267794, 267795, 267796, 267797, 267798, 267799, 267800, 267801, 267802, 267803, 267804, 267805, 267806, 267807, 267808, 267809, 267810, 267811, 267812, 267813, 267814, 267815, 267816, 267817, 267818, 267819, 267820, 267821, 267822, 267823, 267824, 267825, 267826, 267827, 267828, 267829, 267830, 267831, 267832, 267833, 267834, 267835, 267836, 267837, 267838, 267839, 267840, 267841, 267842, 267843, 267844, 267845, 267846, 267847, 267848, 267849, 267850, 267851, 267852, 267853, 267854, 267855, 267856, 267857, 267858, 267859, 267860, 267861, 267862, 267863, 267864, 267865, 267866, 267867, 267868, 267869, 267870, 267871, 267872, 267873, 267874, 267875, 267876, 267877, 267878, 267879, 267880, 267881, 267882, 267883, 267884, 267885, 267886, 267887, 267888, 267889, 267890, 267891, 267892, 267893, 267894, 267895, 267896, 26