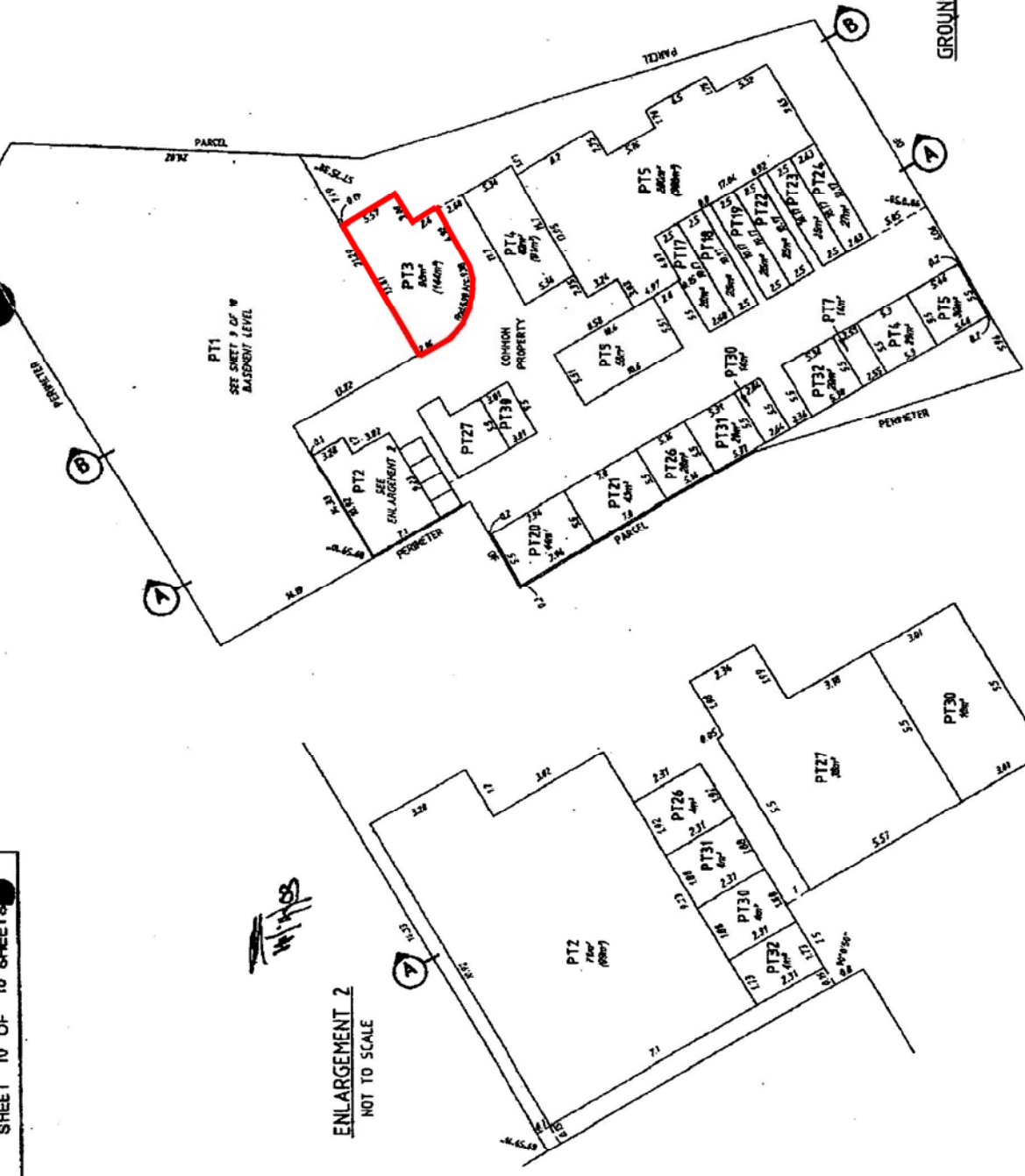


Subject to Dealing or Other Actions



STRATA PLAN
SHEET 10 OF 18 SHEETS



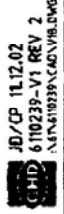
ENLARGEMENT 2
NOT TO SCALE

1:400
0 5 10 20 30m

FOR GROUND LEVEL LOCATION PLAN SEE SHEET 2 OF 18
FOR OTHER PART LOTS 2 AND 3 SEE SHEET 9 OF 18
FOR OTHER PART LOT 7 SEE SHEETS 9 AND 11 OF 18
FOR OTHER PART LOTS 17 TO 20 SEE SHEETS 9 AND 12 OF 18
FOR OTHER PART LOTS 21 TO 24 SEE SHEETS 9 AND 13 OF 18
FOR OTHER PART LOTS 26 AND 27 SEE SHEET 14 OF 18
FOR OTHER PART LOTS 30 TO 32 SEE SHEET 15 OF 18
FOR CROSS SECTIONS SEE SHEET 17 OF 18

THE STRATUM OF PART LOTS 2-5 INCLUSIVE, 7, 17-24
INCLUSIVE, 26, 27, 30, 31 & 32, ON THE GROUND LEVEL, EXTENDS
BETWEEN 7.00 METRES AHD AND 7.80 METRES AHD.
ALL ANGLES ARE MULTIPLES OF 45° UNLESS DEFINED BY A
PERMANENT STRUCTURE, PERIMETER OF PARCEL OR SHOWN
OTHERWISE.

GROUND LEVEL



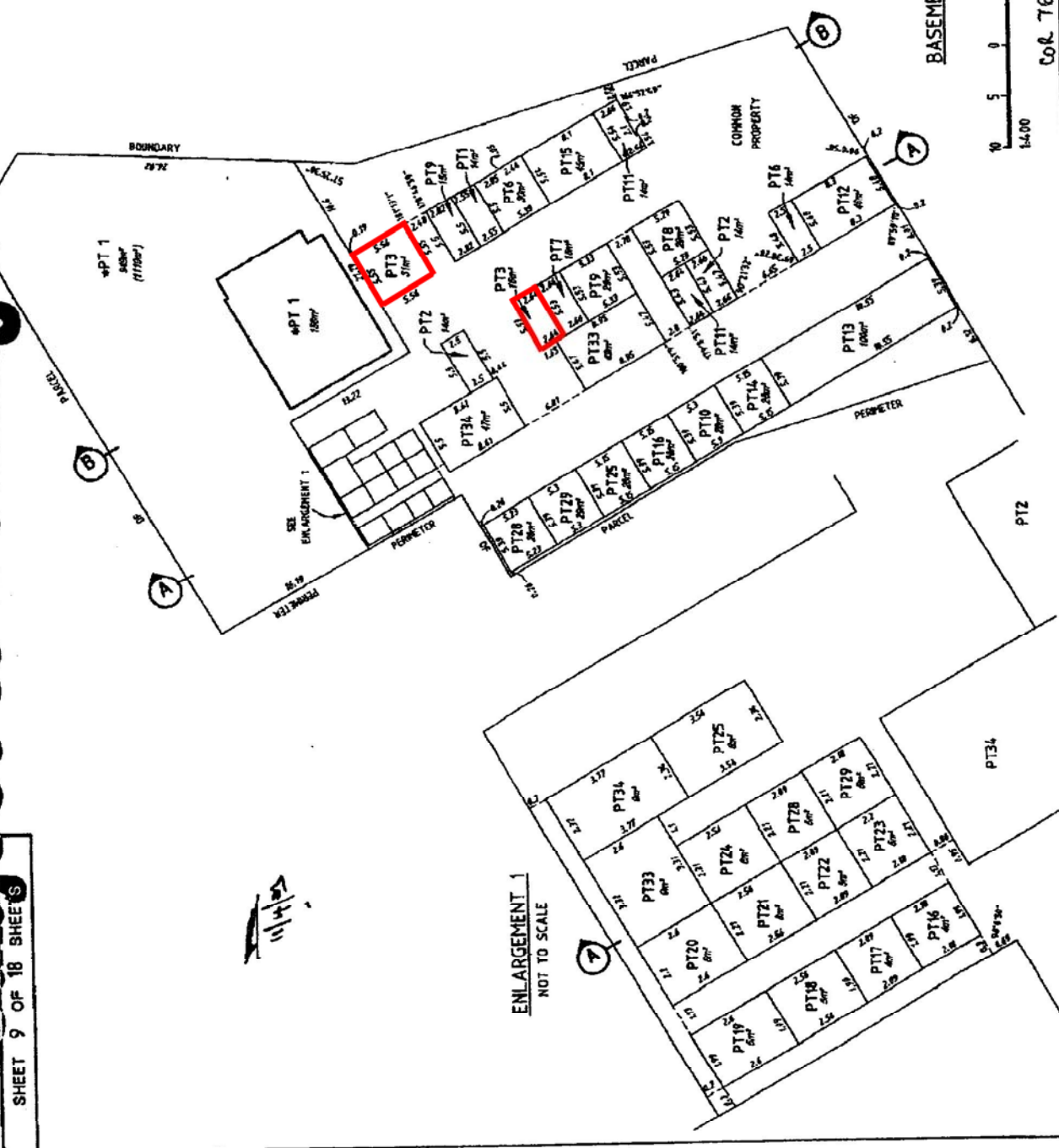
JD/CP 11.12.02
610239-V1 REV 2
MPLS19339ACAV18.DWG

Col. T65/2003 Vol 3 p 5

WARNING: OPENING OR FOLDING WILL LEAD TO REJECTION

Subject to Dealing or Other Actions

STRATA/TITLE PLAN 43064
SHEET 9 OF 18 SHEETS



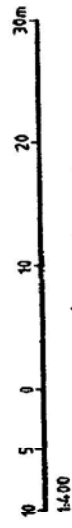
FOR BASEMENT LEVEL LOCATION PLAN SEE SHEET 1 OF 18
FOR OTHER PART LOTS 2 AND 3 SEE SHEET 10 OF 18
FOR OTHER PART LOTS 4 TO 6 SEE SHEET 11 OF 18
FOR OTHER PART LOTS 7 TO 10 SEE SHEET 11 OF 18
FOR OTHER PART LOTS 11 TO 15 SEE SHEET 12 OF 18
FOR OTHER PART LOTS 16 TO 20 SEE SHEETS 10 AND 12 OF 18
FOR OTHER PART LOTS 21 TO 24 SEE SHEETS 10 AND 13 OF 18
FOR OTHER PART LOTS 25 TO 29 SEE SHEET 13 OF 18
FOR OTHER PART LOTS 30 AND 31 SEE SHEET 14 OF 18
FOR OTHER PART LOTS 32 AND 33 SEE SHEET 16 OF 18
FOR OTHER PART LOTS 34 AND 35 SEE SHEET 17 OF 18

UNDER SECTION 3(2)(b) OF THE STRATA TITLES ACT 1985,
THE STRATUM OF PART LOT 1 MARKED WITH * EXTENDS
BETWEEN 0.00 METRES AND 30.00 METRES AND THE
VERTICAL BOUNDARIES OF PT LOT 1 WHICH IS A BUILDING,
EXTEND TO THE EXTERNAL SURFACE OF WALLS.
THE STRATUM OF PART LOTS 1 (174m²), 2, 3, 6-25
INCLUSIVE, 28, 29, 33 & 34, ON THE BASEMENT LEVEL,
EXTENDS BETWEEN 1.6 METRES AND 4.00 METRES AHD.
THE UPPER SURFACE OF THE FLOOR SLAB OF THE BUILDING
ON PT LOT 1 IS 2.70 METRES AHD.

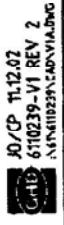
ALL ANGLES ARE MULTIPLES OF 45° UNLESS DEFINED BY A
PERMANENT STRUCTURE, PERIMETER OF PARCEL OR SHOWN
OTHERWISE.

CP = COMMON PROPERTY

BASEMENT LEVEL



Col. T65/1,003 Vol 3 p 5



WARNING: CREASING OR FOLDING WILL LEAD TO REJECTION