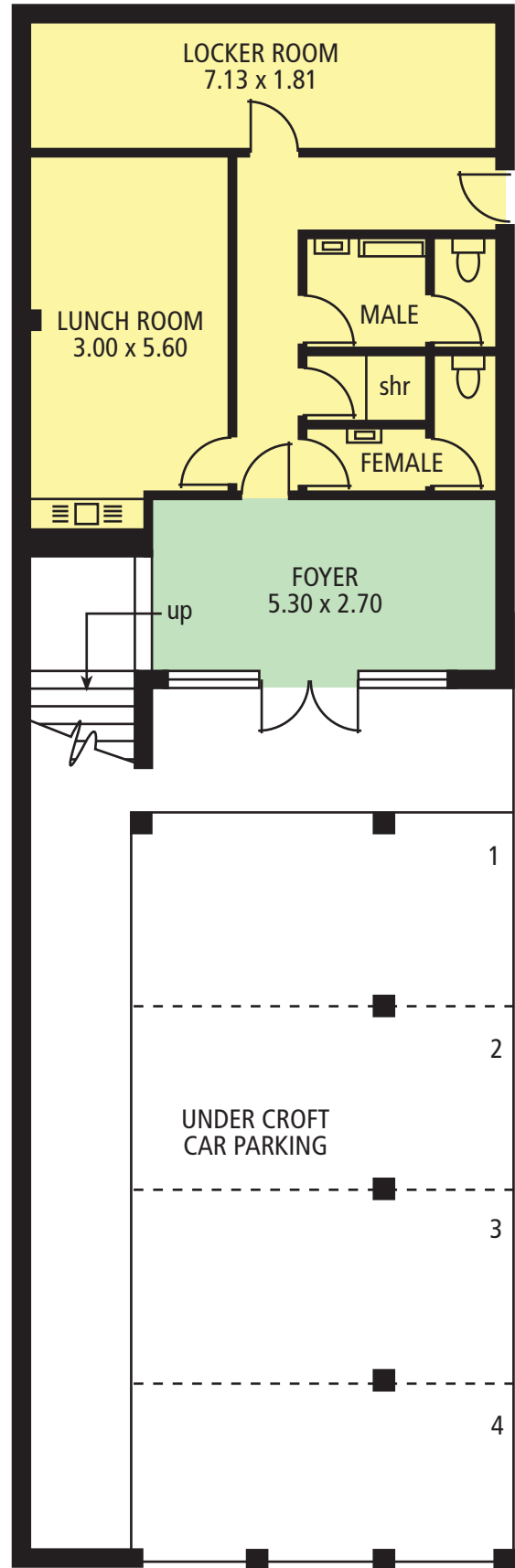




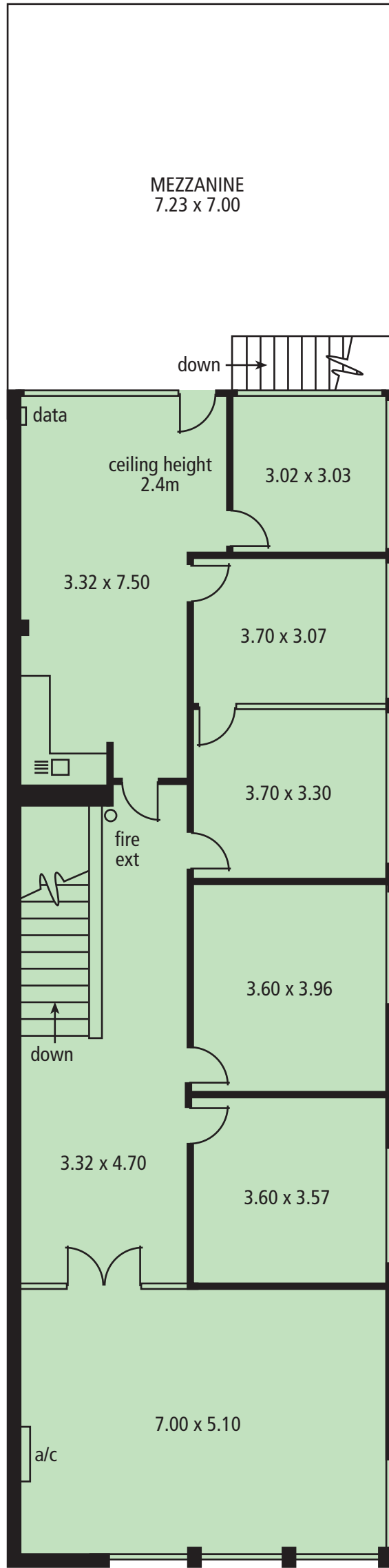
SCALE 1:100

22 Starr Avenue, North Plympton

OFFICE / AMENITIES PLAN



GROUND FLOOR



FIRST FLOOR

22 Starr Avenue, North Plympton

ESTIMATED GROSS LETTABLE AREA

WORKSHOP:	993 sq.metres
OFFICE :	181 sq.metres
AMENITIES:	54 sq.metres

TOTAL: 1228 sq.metres

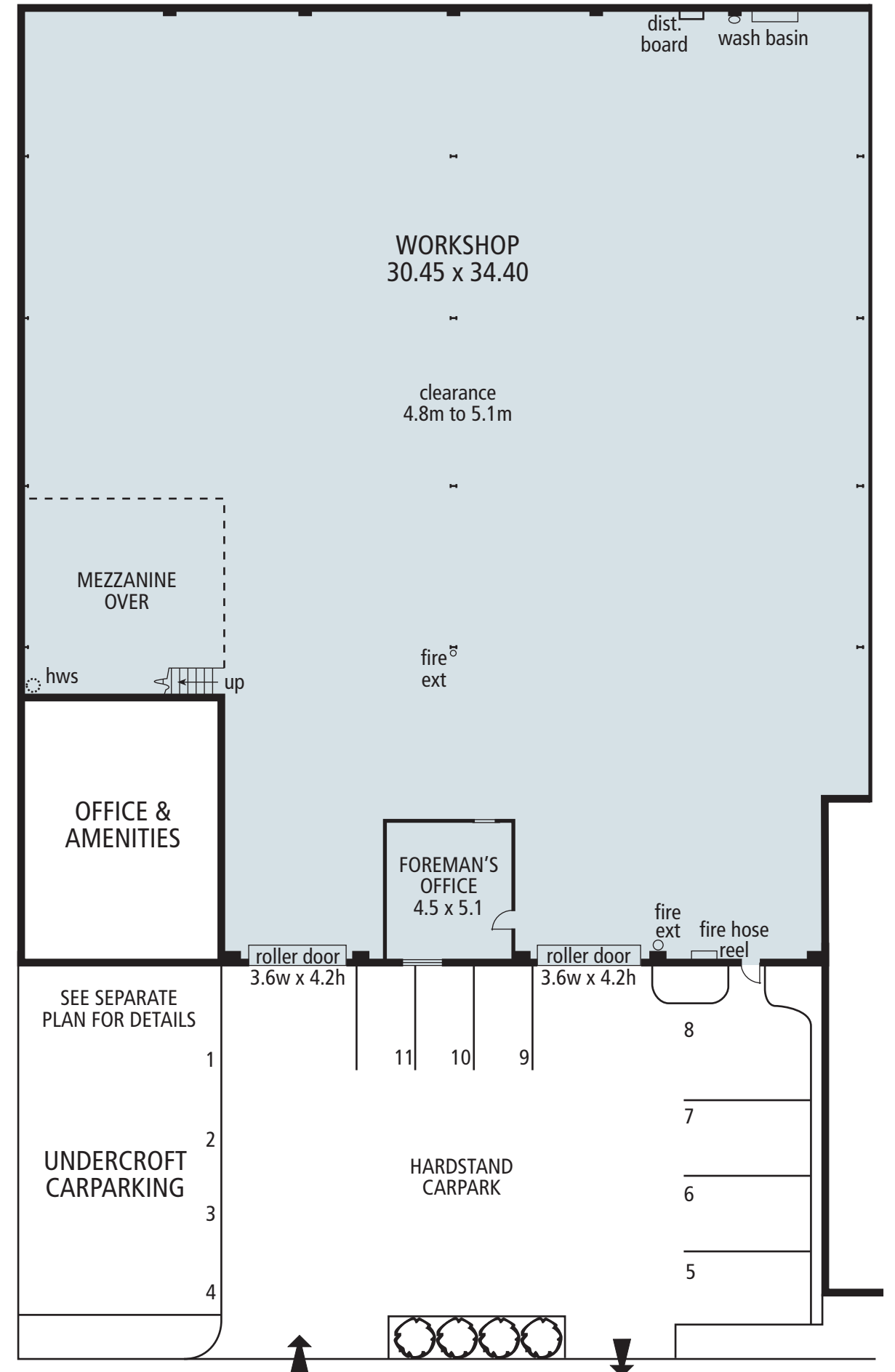


Complies with the PCA Method of Measurement

ADDITIONAL AREAS (approx)

MEZZANINE:	52 sq.metres
UNDERCROFT PARKING :	95 sq.metres
FOREMANS OFFICE:	24 sq.metres
HARDSTAND CARPARK:	260 sq.metres

SCALE 1:200



STARR AVENUE