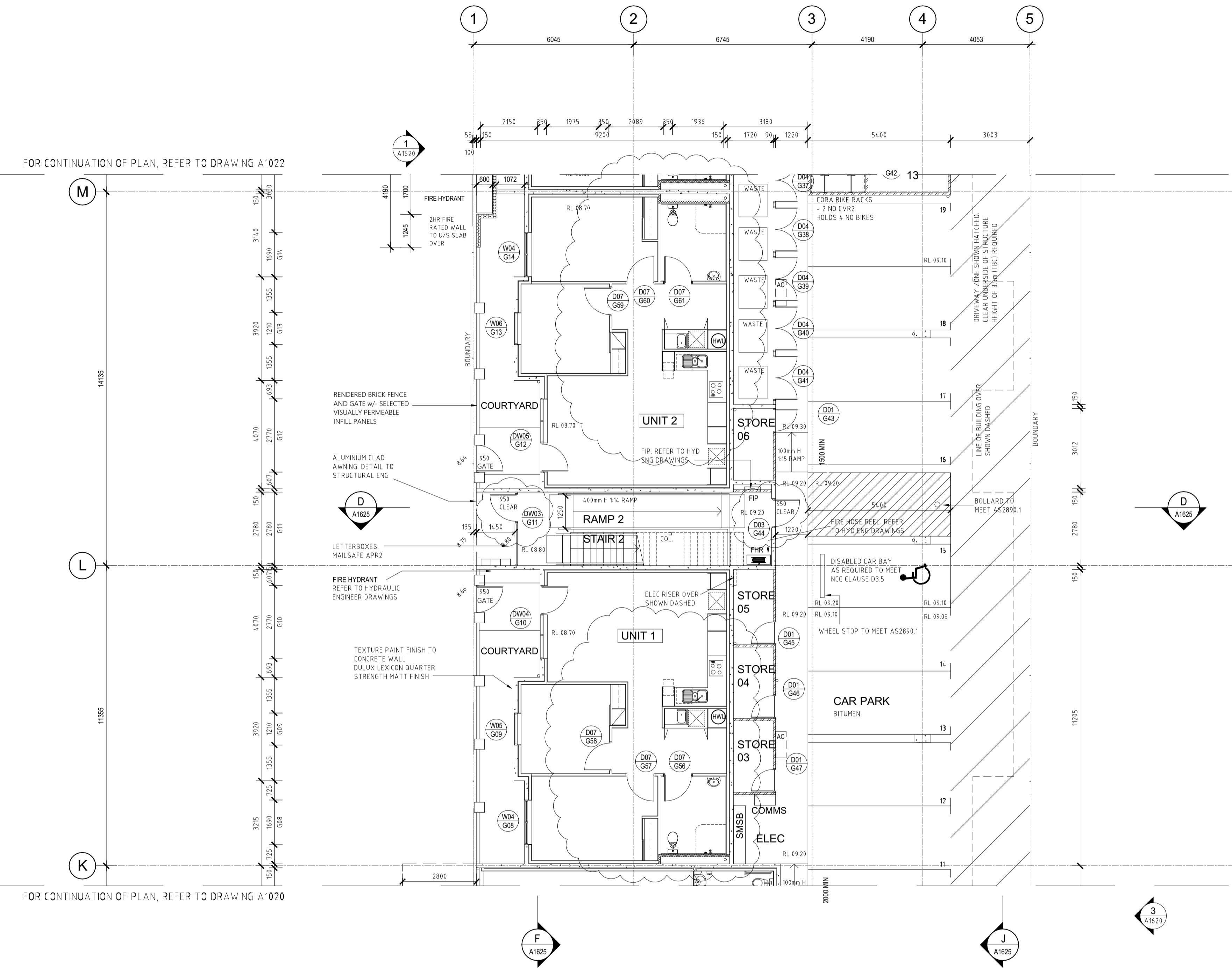


FOR CONTINUATION OF PLAN, REFER TO DRAWING A1022

FOR CONTINUATION OF PLAN, REFER TO DRAWING A1020



WALL TYPE LEGEND

| | |
|-----------|-----------------------------------------------------------------------------------------------------------------------------------------------------------------------------------------------------------------------------------------------------------------------------------------------------------------|
| WT1 | 150mm THICK CONCRETE (AFS), INTERNAL WALL DIRECT STICK 10mm GYPROCK REFER TO ENG. DRAWING |
| WT2 | 2 LAYERS 90mm THICK MASONRY WALL WITH 10mm CAVITY NON LOAD BEARING |
| EXTERNAL | WT3 (272mm THICK) 150mm THICK CONCRETE, WALL WRAP, 20mm AIR GAP, 92mm STEEL STUD WITH ROCKWOOL INSULATION, 10mm GYPROCK TOTAL R2.8 REQUIRED TO EXTERNAL WALLS |
| APARTMENT | WT4 (362mm THICK) FIRE WALL FRL 120/120/120 RW+CTR 50 PARTY WALL BETWEEN APARTMENTS 10mm GYPROCK, 76mm STEEL STUD, 75mm ACOUSTIGARD 14kg/m3, INSULATION, 20mm AIR GAP, 150mm CONCRETE WALL, 20mm AIR GAP, 76mm STEEL STUD, 75mm ACOUSTIGARD 14kg/m3, INSULATION, 10mm GYPROCK |
| APARTMENT | WT5 (256mm THICK) FIRE WALL FRL 120/120/120 RW50 (RW50+DISCONTINUOUS CONSTRUCTION AT LIFT) TOTAL R1.8 REQUIRED PARTY WALL BETWEEN APARTMENT AND CORRIDOR 10mm GYPROCK, 76mm STEEL STUD, 75mm ACOUSTIGARD 14kg/m3, INSULATION, 20mm AIR GAP, 150mm CONCRETE WALL |
| CORRIDOR | WT6 WALLS TO CORRIDOR 150mm THICK CONCRETE (AFS) REFER TO ENG. DRAWING |
| | WT8 INTERNAL TENANCY WALL 1 LAYER 13mm PLASTERBOARD, 76mm STEEL STUD, 75mm BRADFORD GLASSWOOL PARTITION BATTS / 50mm GLASSWOOL, 1 LAYER 13mm PLASTERBOARD (AQUACHEK OR SIMILAR IN WET AREAS) (13mm IMPACTCHEK TO UNITS 1, 2 AND 3) |
| | WT7 TO SERVICE DUCTS / RISERS RW+CTR NOT LESS THAN 40 HABITABLE ROOMS, 25 TO NON HABITABLE ROOMS GYPROCK SHAF/WALL SYSTEM 2 LAYERS 13mm AQUACHEK (OR SIM), 76mm STEEL STUD, 75mm ACOUSTIGARD 14kg/m3 INSULATION, PIPEWORK TO BE REHAU RUFAND PLUS, OR LAGGED WITH 25mm GLASSWOOL, 4.5kg/m2 PYROTEK A525C OR SIM |

REFER TO STRUCTURAL ENGINEERS DRAWINGS FOR RISER INFORMATION.
REFER TO RELEVANT ENGINEERS DRAWINGS FOR FURTHER INFORMATION
ALL PARTY WALLS TO EXTEND TO ROOF OR SLAB OVER
AQUACHEK OR SIMILAR IN WET AREAS

NOTES:

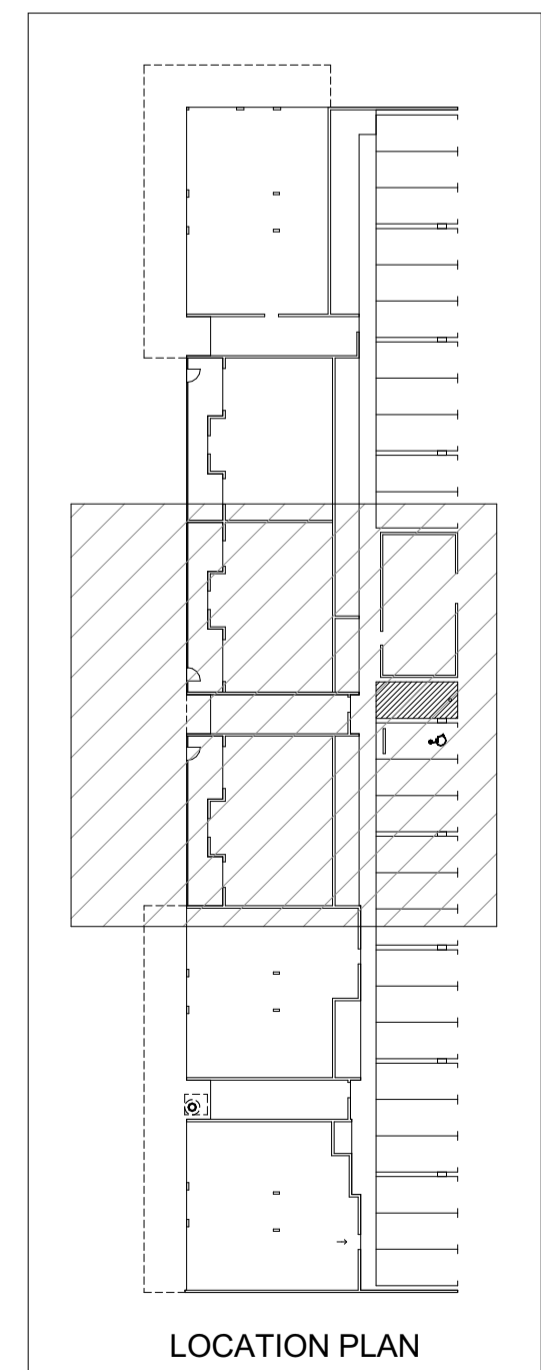
- TYPE A CONSTRUCTION REQUIRED
- CLASS 2 PERMANENT RESIDENTIAL
- CLASS 8 COMMERCIAL TENANCY
- CLASS 7a CAR PARK

- ALL INTERNAL WALL DIMENSIONS TO STUD WORK, AND ARE EXCLUSIVE OF LININGS
- ALL TILED AND TIMBER FLOORS TO HAVE REGUPO 4515 OR SIMILAR APPROVED.
- ALL CARPETED AREAS TO HAVE UNDERLAY
- CHECK ALL STEEL COLUMN SETOUT DIMENSIONS WITH STEEL SHOP DRAWINGS.
- ALL GLAZING TO COMPLY WITH AS1288 AND AS2047
- ALL PARKING TO COMPLY WITH AS2890.1 AND AS2890.6
- ALL STAIRWAYS, HANDRAILS AND TACTILES TO COMPLY WITH AS1428.1 & 1428.4
- LIFT: WEST COAST ELEVATORS, CROWN SUITE LIFT, SINGLE ENTRY 500KG ANDREW BURKE 0435 133 880

FFL 48.230 FINISHED FLOOR LEVEL

TYPE

- DOOR WINDOW REFERENCE REFER TO DOOR WINDOW SCHEDULE
- FIRE EXTINGUISHER REFER TO FIRE REPORT
- DOWN PIPE REFER TO HYDRAULIC DRAWINGS
- FLOOR DRAIN REFER TO HYDRAULIC DRAWINGS
- HOSECOCK REFER TO HYDRAULIC DRAWINGS
- COLUMN REFER TO STRUCTURAL ENG. DRAWINGS
- FIRE HOSE REEL IN EXPOSED CABINET GLAVINS ITEM 381905 OR SIMILAR



GROUND FLOOR PLAN - PART
SCALE 1:100

Nicheliving
construction

180 Newcastle Street,
Perth WA 6000

TEL: 08 9483 0088
FAX: 08 9483 0090
www.nicheliving.com.au

| DATE | REV | AMENDMENT |
|----------|-----|--------------------------------------------------------|
| 17.05.19 | A | ISSUED FOR REVIEW |
| 23.05.19 | B | ISSUED FOR DA APPROVAL |
| 04.06.19 | C | ISSUED FOR DA APPROVAL |
| 20.06.19 | D | AMEND CAR BAYS AND BIN STORE, ADJUST APARTMENT LAYOUTS |
| 05.02.20 | E | ISSUED FOR DEFS SUBMISSION |
| 20.03.20 | F | ISSUED FOR BUILDING PERMIT |
| 01.05.20 | 01 | ISSUED FOR CONSTRUCTION |
| 02.06.20 | 02 | REVISED LEVELS |
| 05.07.20 | 03 | REVISED LEVELS |
| 20.08.20 | 04 | ELEC RISER SHOWN |

| DATE | REV | AMENDMENT |
|----------|-----|-----------------------------------------|
| 03.05.21 | 05 | REVISE UNITS 1, 2 & 3 WALL TYPES |
| 08.05.21 | 06 | ADJUST BATHROOM DUCT WALL & DOOR WIDTHS |
| 18/01/22 | 10 | FENCE AMENDMENTS |

| DATE | REV | AMENDMENT |
|------|-----|-----------|
|------|-----|-----------|

ISSUE FOR CONSTRUCTION

PROJECT
MIXED USE DEVELOPMENT
LOT 403
CNR GERARD ST AND CAMPBELL ST
EAST CANNINGTON

DRAWING
LOT 403 - GROUND FLOOR PLAN

| PROJECT DATE | NOVEMBER 2018 | DWG No | REV |
|--------------|---------------|--------|-----|
| PROJECT No | NL_EC | A1021 | 10 |
| SCALE | 1:100 | @ A1 | |

DO NOT SCALE - IF IN DOUBT ASK. ALL DIMENSIONS IN MILLIMETERS. VERIFY ALL SETOUTS ON SITE BEFORE COMMENCING ANY WORKS. IT IS AN INFRINGEMENT OF COPYRIGHT IN THIS DRAWING AND DESIGN TO COPY OR COMMUNICATE ITS CONTENTS TO ANY THIRD PARTY WITHOUT WRITTEN CONSENT OF NICHELIVING