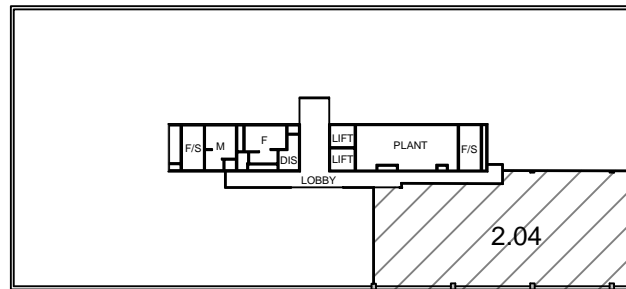


# LETTABLE AREA PLAN FOR SUITE 2.04, LEVEL 2, QUAD 2, 102 BENNELONG ROAD, HOMEBUSH BAY, NSW



LOCATION PLAN  
NOT TO SCALE

- INT - INTERNAL FACE
- EXT - EXTERNAL FACE
- C/L - CENTRELINE WALL
- G/L - GLASS LINE

## METHOD OF MEASUREMENT

AREAS HAVE BEEN CALCULATED IN ACCORDANCE WITH THE PROPERTY COUNCIL OF AUSTRALIA (PCA) METHOD OF MEASUREMENT FOR LETTABLE AREA (MARCH 1997)

(SURVEY DATE 19/01/2011)

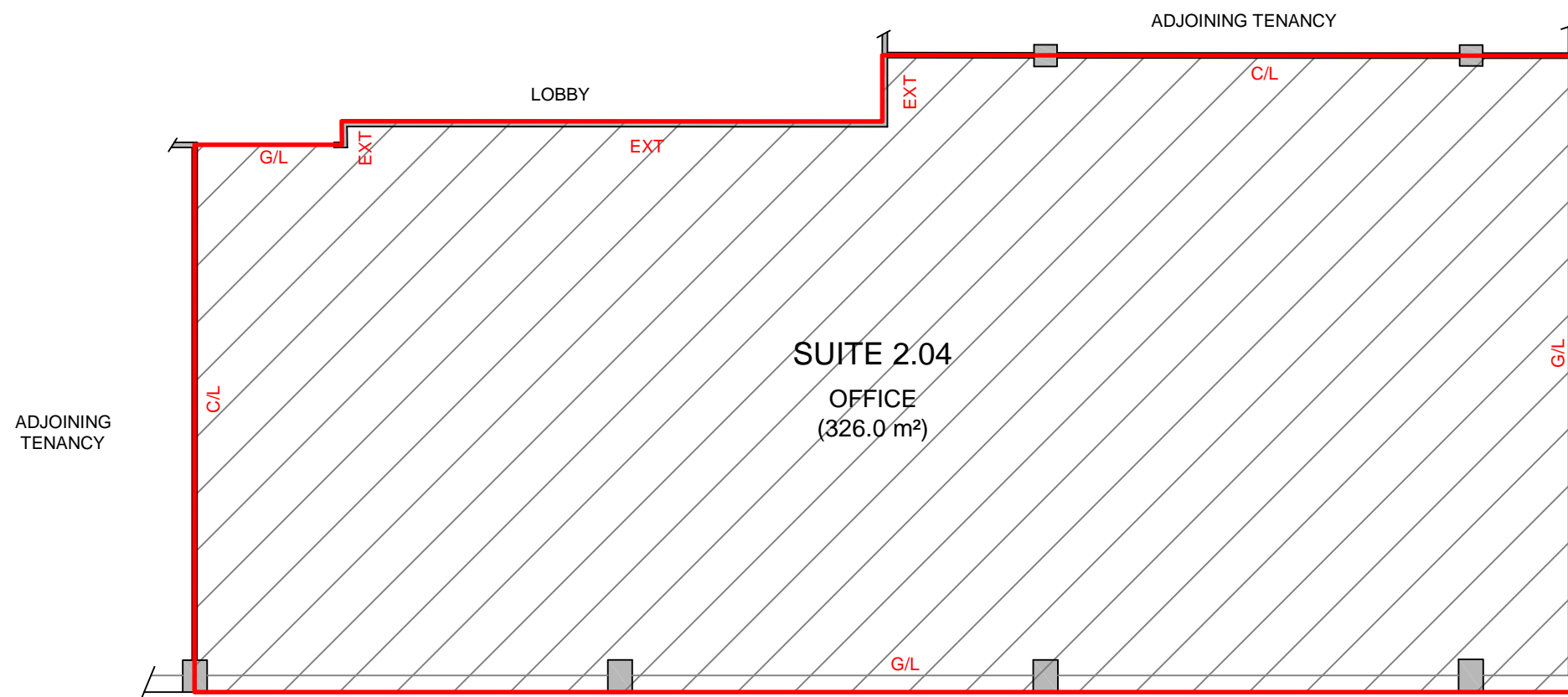
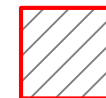
## GUIDELINES USED

NET LETTABLE AREA

## SCHEDULE OF AREAS

SUITE 2.04 - OFFICE	326.0 m <sup>2</sup>
<b>TOTAL AREA</b>	<b>326.0 m<sup>2</sup></b>

LETTABLE AREA



PLAN PREPARED FOR:

**JONES LANG LASALLE**

**LETTABLE AREA PLAN**  
SUITE 2.04, QUAD 2,  
102 BENNELONG ROAD  
HOMEBUSH BAY, NSW

DATE: 19/01/2011

REF: 37996RB

REV: A

SCALE: 1: 125 at A3

sydney canberra melbourne brisbane adelaide

**REALSERVE**

Real Estate Plans & Surveys

P 02 9629 9377

F 02 9475 5050

[www.realserve.com.au](http://www.realserve.com.au)