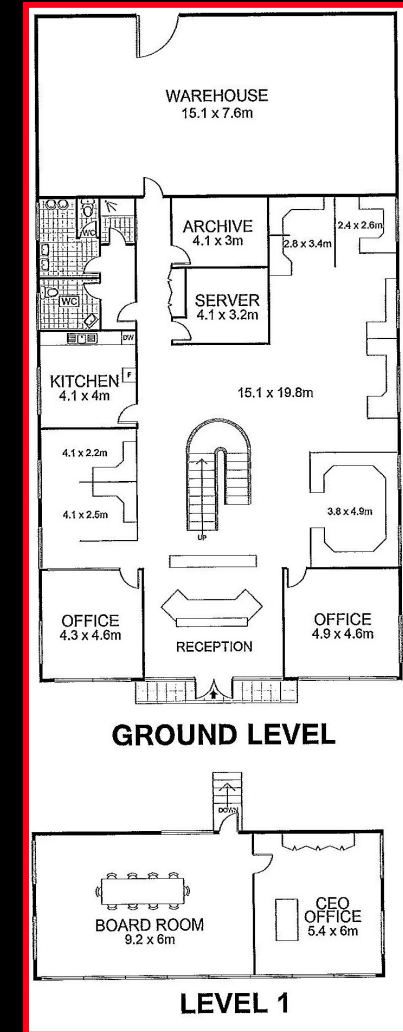


HINDMARSH 5007 SA | 235 Port Road

**F
O
R
L
E
A
S
E**



Adelaide's Major North West Corridor



Key Facts

Ideally situated on Port Road, 2 kilometres North West of Adelaide GPO.

Open plan layout featuring:

- ◆ 310sqm of office
- ◆ 91 sqm of mezzanine
- ◆ 118 sqm of warehouse with high clearance roller door
- ◆ 31 onsite car parking spaces

For more information

please contact:

Romualdo Cicchiello

0412 710 348

rcicchiello@ljhc.com.au

Gregor Zorkovic

0418 844 049

gzorkovic@ljh.com.au