



# BURLEIGH BASE

[WWW.THEPOTTERGROUP.COM.AU](http://WWW.THEPOTTERGROUP.COM.AU)

**potter  
projects**

DARREN MEALING

0420 446 277

07 5572 6049

[sales@thepottergroup.com.au](mailto:sales@thepottergroup.com.au)

Level 1, 6/3 Atlantic Ave, Mermaid Beach, QLD 4218  
PO Box 500 Mermaid Beach, QLD 4218



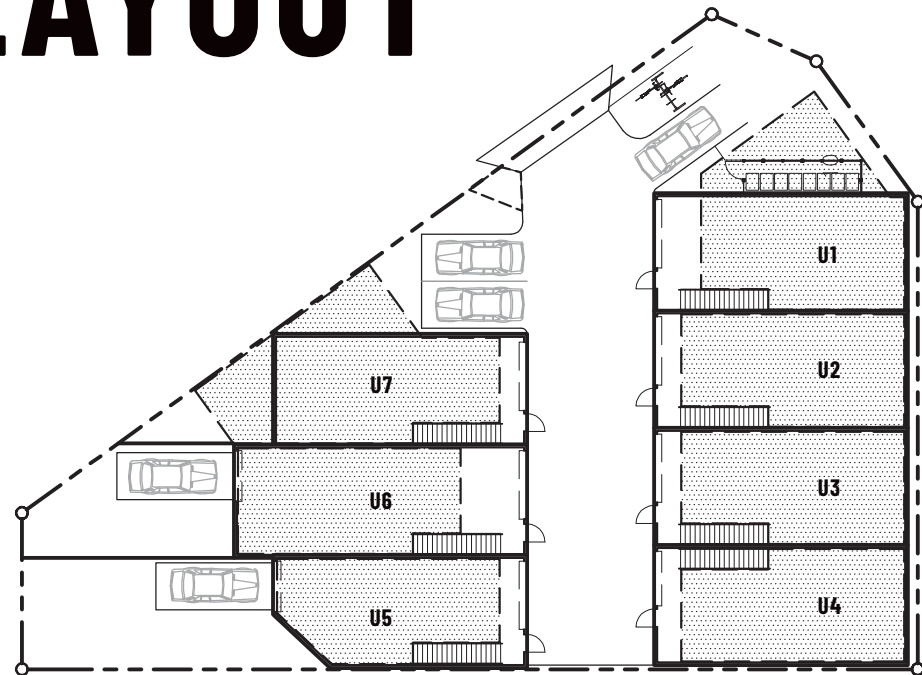
POTTERPROJECTS

219-223 BURLEIGH CONNECTION RD,  
BURLEIGH HEADS, QLD 4220

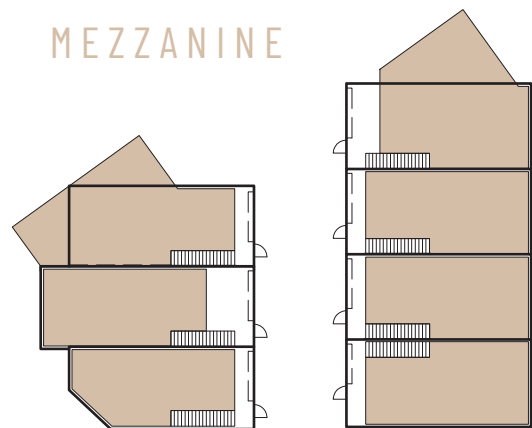


219-223 BURLEIGH  
CONNECTION RD

# BUILDING LAYOUT



MEZZANINE



## 219-223 BURLEIGH CONNECTION RD

7 Strata Titled, Low Impact Industrial Self-Storage Man Caves, featuring approved mezzanine floors with modern fit out.

Centrally located in Burleigh's commercial hub, only 2km to James Street.

Developed by reputable 'Potter Projects' who have recently completed the following Industrial Developments:

**Burleigh Work Sheds**  
48 Hutchinson St, Burleigh Heads

**Pl.43**  
43 Township Dr, Burleigh Heads

**Miami Man Caves**  
8-14 Avalon Pde, Miami

**Flagstone Business Centre**  
3 Flagstone Dr, Burleigh Heads

# BURLEIGH BASE

## CENTRAL LOCATION

Burleigh Heads Beach – 2.8km

M1 Motorway – 1.1km

Stockland Burleigh Heads  
Shopping Centre – 700m

Gold Coast International  
Airport – 10.2km

A-grade location situated next door to Billabong HQ

Ideal for storage of boats, cars, caravans, light machinery & hardware

Secure fencing and 24 hour surveillance

Architecturally designed with modern fixtures & finishes

