



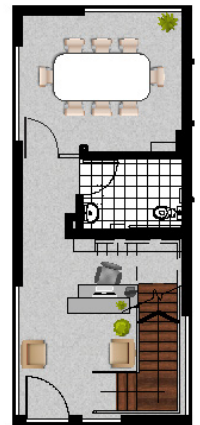
POD 12 - 168m²

KEY FEATURES

- Two storey office
- Stand-alone design
- Individual corporate on-building signage
- Polished concrete floors, concrete reception desk, separate meeting room/office and disabled amenities at street level
- Open plan, carpeted first floor office space with kitchen and bathroom
- Dedicated and visitor parking
- Pylon signage

LEASE SUMMARY

Area:	168m ²
Net rental:	\$345/m ² pa + GST \$4,830 PCM + GST \$57,960 pa + GST
Outgoings: (Estimated 2016)	\$35/m ² pa \$5,880 pa + GST
Carparking:	3 bays \$990/bay pa + GST
Available:	Immediately



Ground
49m²



First 119m²
Total 168m²