



Nepean Health Hub



Floorplan Brochure

Cnr. Parker St. & Barber Ave,
Nepean, NSW
Australia 2742

Creating Thriving Health Hubs

We create accessible healthcare for everyone, creating a continuum of care through Primary and Specialist Health Hubs.

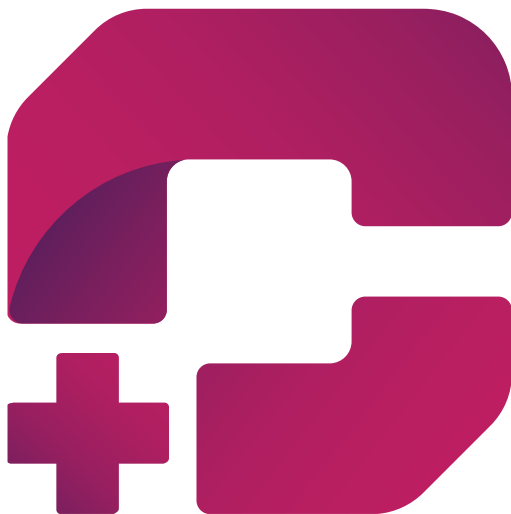
Designed to offer complimentary and supportive services, our Specialist Health Hubs are located within close proximity to both public and private hospitals.

The future of healthcare is integration and reimagining the patient experience. Our Health Hubs provide Specialists with direct opportunities

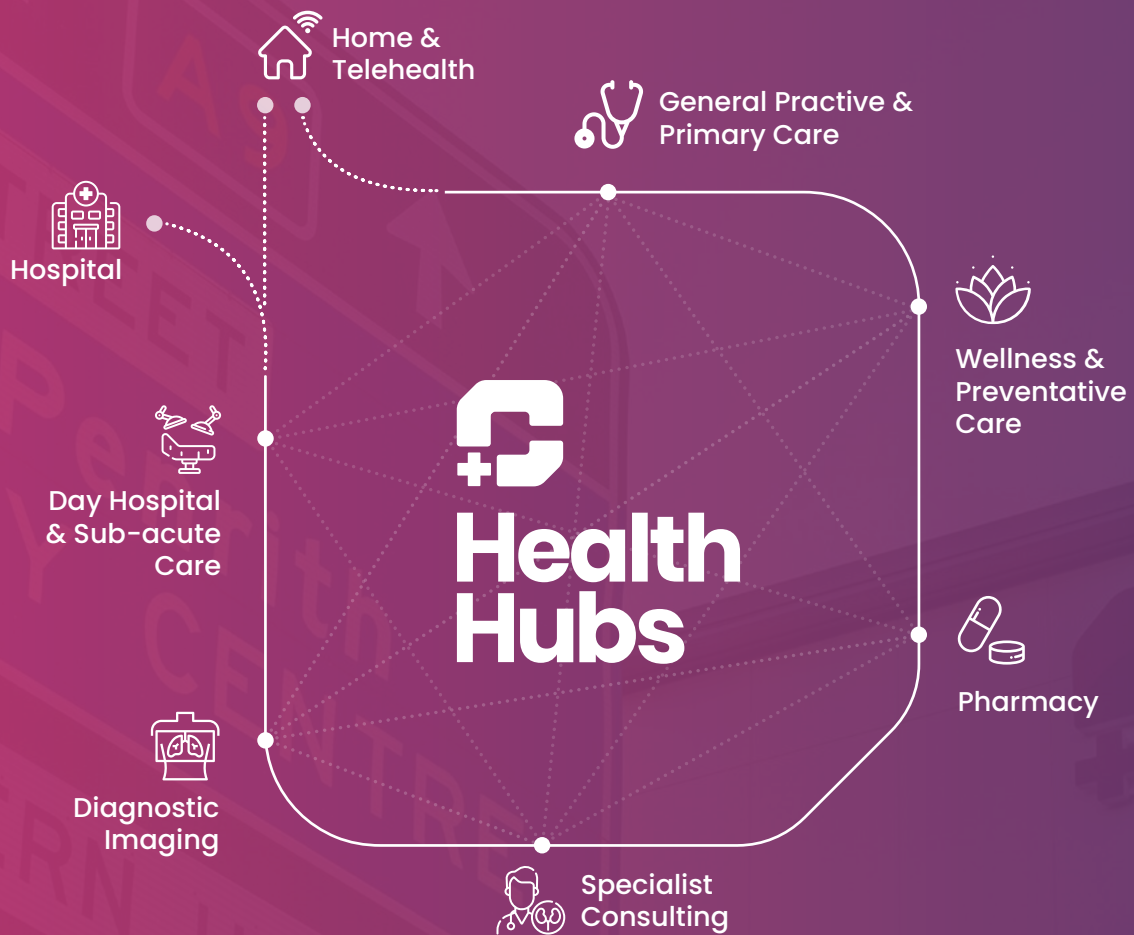
to make a meaningful impact on the local community.

Our passion for healthcare is people-focused and our desire to see communities thrive is ingrained in all that we do.

Opportunities are open for all medical professionals to be at the forefront of healthcare integration. Secure your space now in this state-of-the-art integrated Health Hub.



The future of healthcare is **integration** and reimagining the patient experience.



Every Australian community
needs a thriving 'end to end'
integrated health centre.

www.healthhubs.com.au



Join western Sydney's newest
integrated health centre
delivering patient centred care.



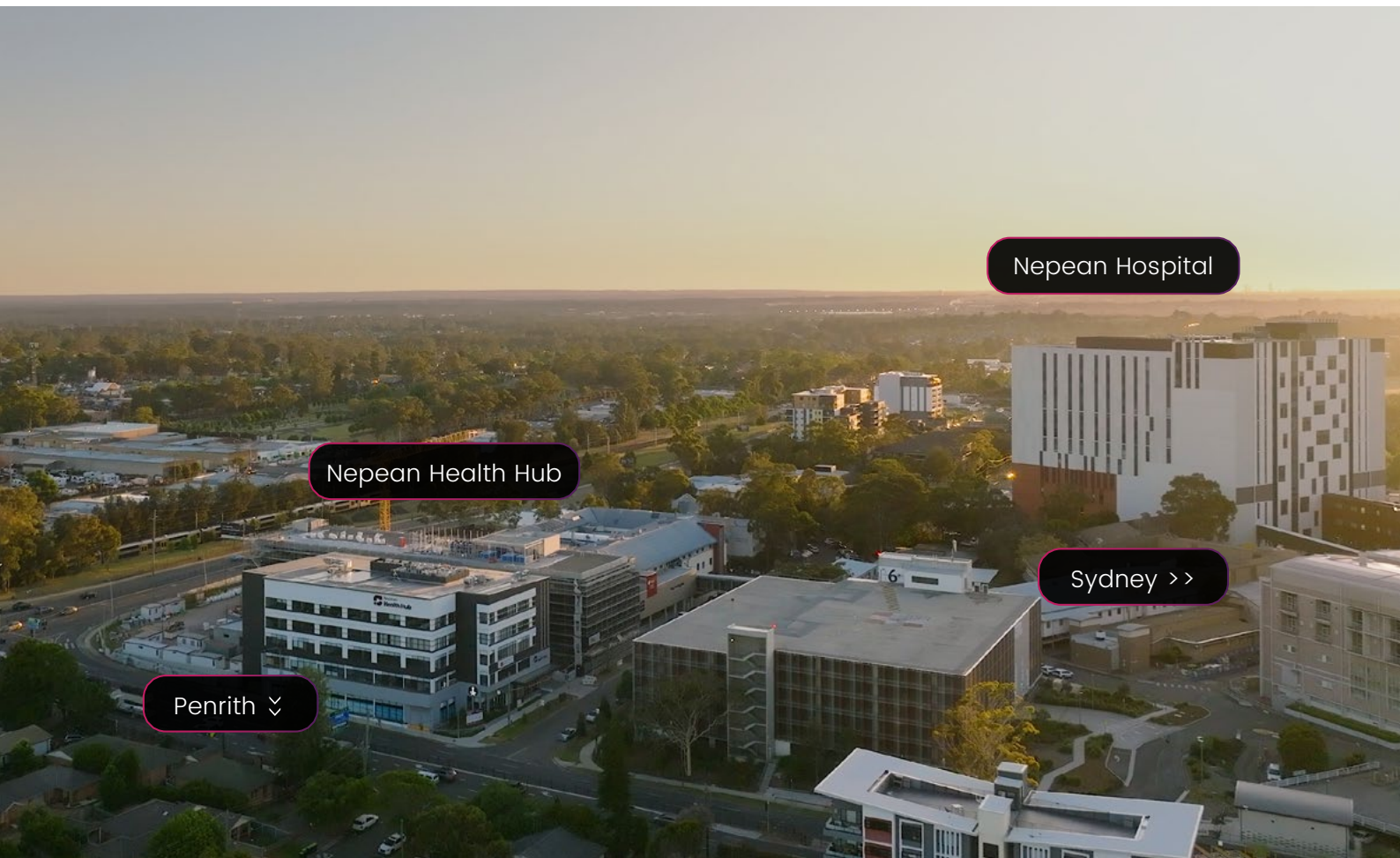
Sales & Leasing Options Available

Snapshot

Nepean Health Hub is a state-of-the-art, purpose-built integrated health centre strategically positioned in the heart of the Nepean Hospital precinct. Benefiting from a one billion dollar investment, the hospital precinct will see a huge expansion in the operational capacity of health services.

Key Elements

- Purpose-built to facilitate collaborative patient-centred care
- High exposure site
- Medical class 9a building
- Accessible via public transport routes
- Abundant basement car parking
- Flexible tenancy, strata, and consulting suite options
- Integrated fit-out options, 'Your Practice. Your Way.'
- Prominent signage opportunities available



Nepean Hospital

Nepean Health Hub

Sydney >>

Penrith ∨

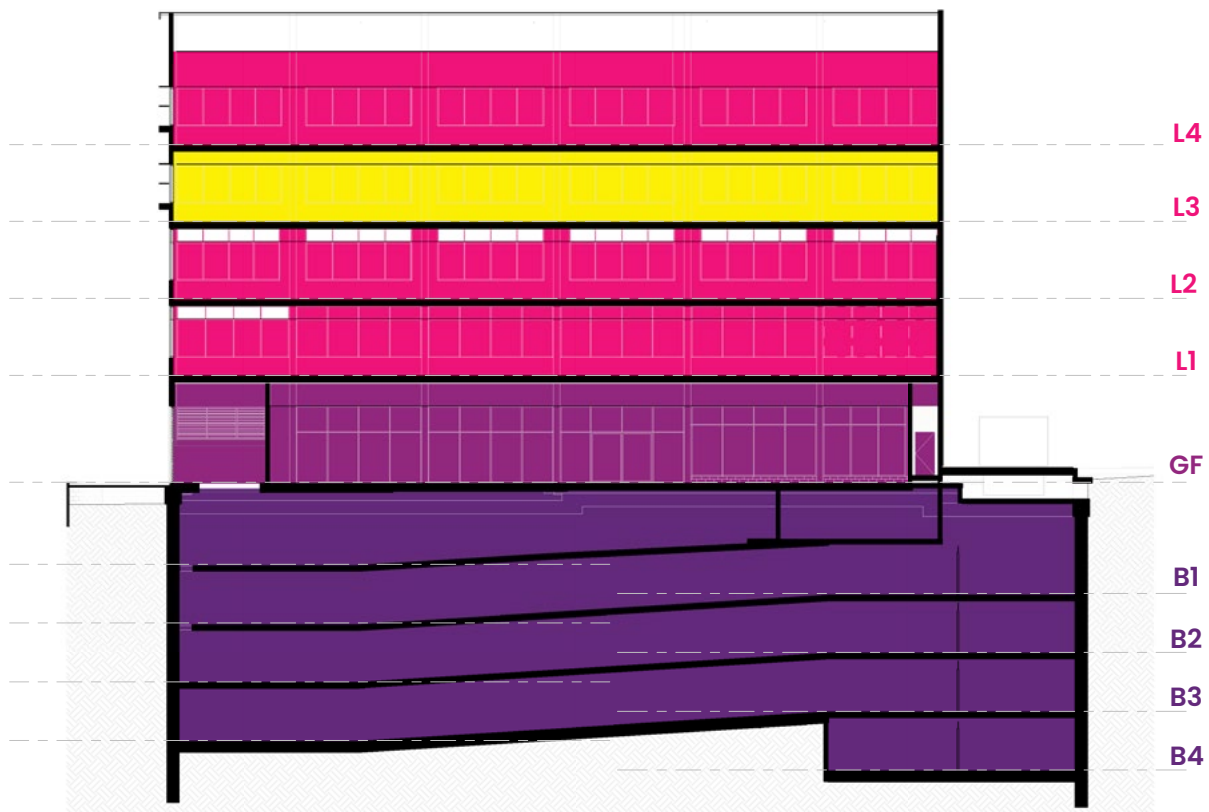
The Future of Healthcare

Nepean Health Hub is located in Penrith, which lies on the Nepean River and is one of the fastest-growing areas in Sydney. This new development will bring an extension of services to support the current and future healthcare needs of Nepean.

Located on the corner of Parker Street and Barber Avenue, Nepean Health Hub with five floors of possibilities for healthcare professionals to develop, grow, create, or begin their journey.

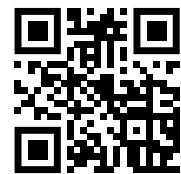
Floor Plan

- Level 4 $\geq 1500\text{m}^2$
- Level 3 $\geq 1450\text{m}^2$
- Level 2 $\geq 1450\text{m}^2$
- Level 1 $\geq 1400\text{m}^2$
- Ground Floor $\geq 1000\text{m}^2$
- Basements ≥ 201 Car Parks



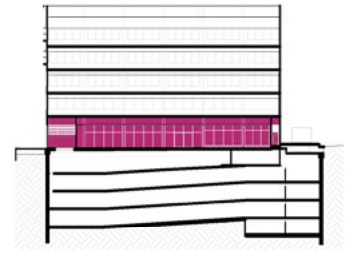


Integrated Health Hubs focused on continuum of care.

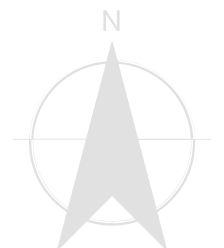


Beerwah, QLD • Canberra, ACT • Chermside, QLD
North Lakes, QLD • Gosford, NSW • Nepean, NSW

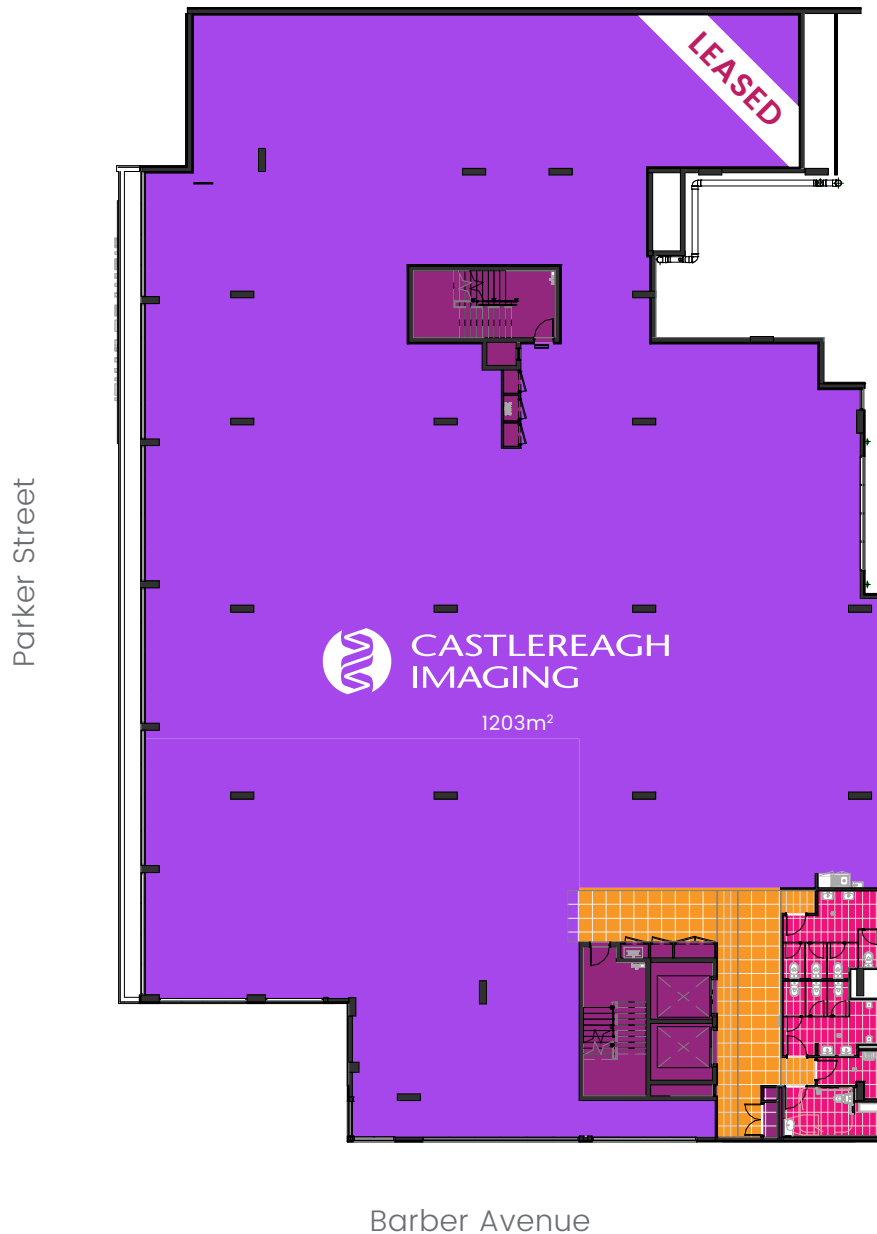
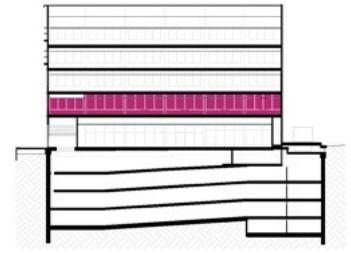
Ground Floor



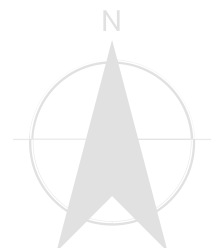
Not to Scale.
All areas are indicative and subject to final survey.
Internal layout drawings are indicative only and items shown are not included in the purchase.



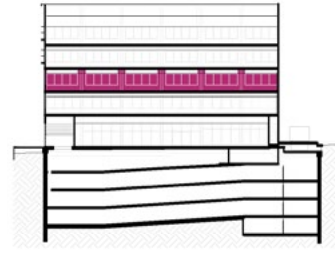
Level One



Not to Scale.
All areas are indicative and subject to final survey.
Internal layout drawings are indicative only and items shown are not included in the purchase.



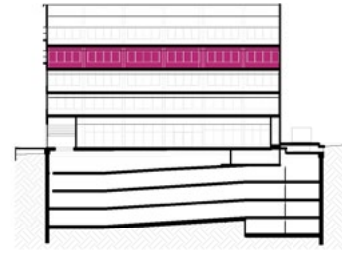
Level Two



Not to Scale.
All areas are indicative and subject to final survey.
Internal layout drawings are indicative only and items shown are not included in the purchase.



Level Three



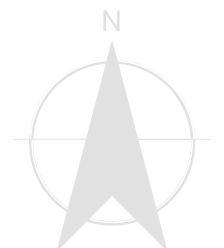
Not to Scale.
All areas are indicative and subject to final survey.
Internal layout drawings are indicative only and items shown are not included in the purchase.



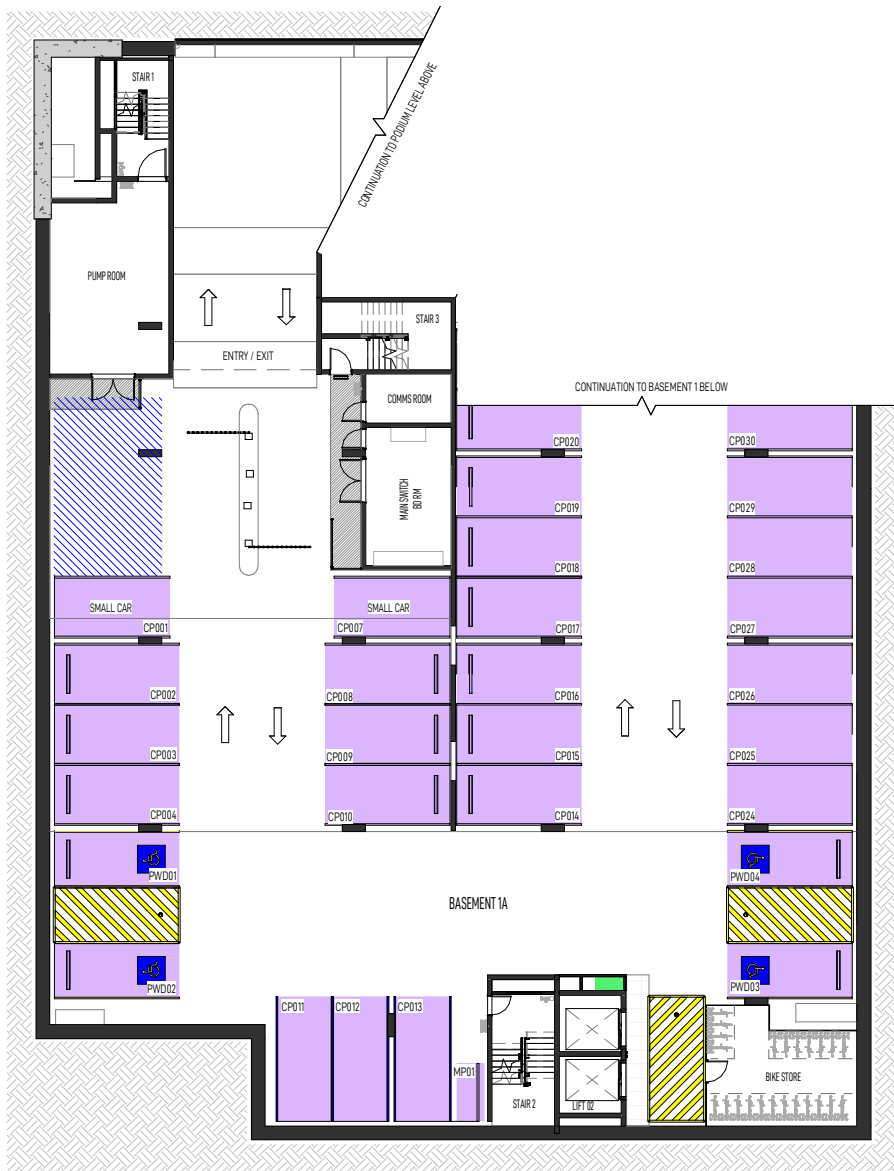
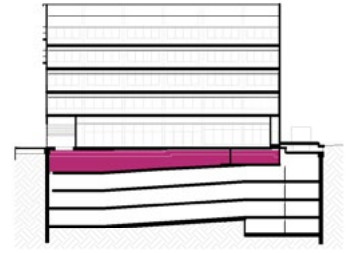
Level Four



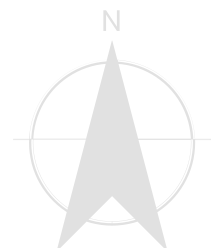
Not to Scale.
All areas are indicative and subject to final survey.
Internal layout drawings are indicative only and items shown are not included in the purchase.



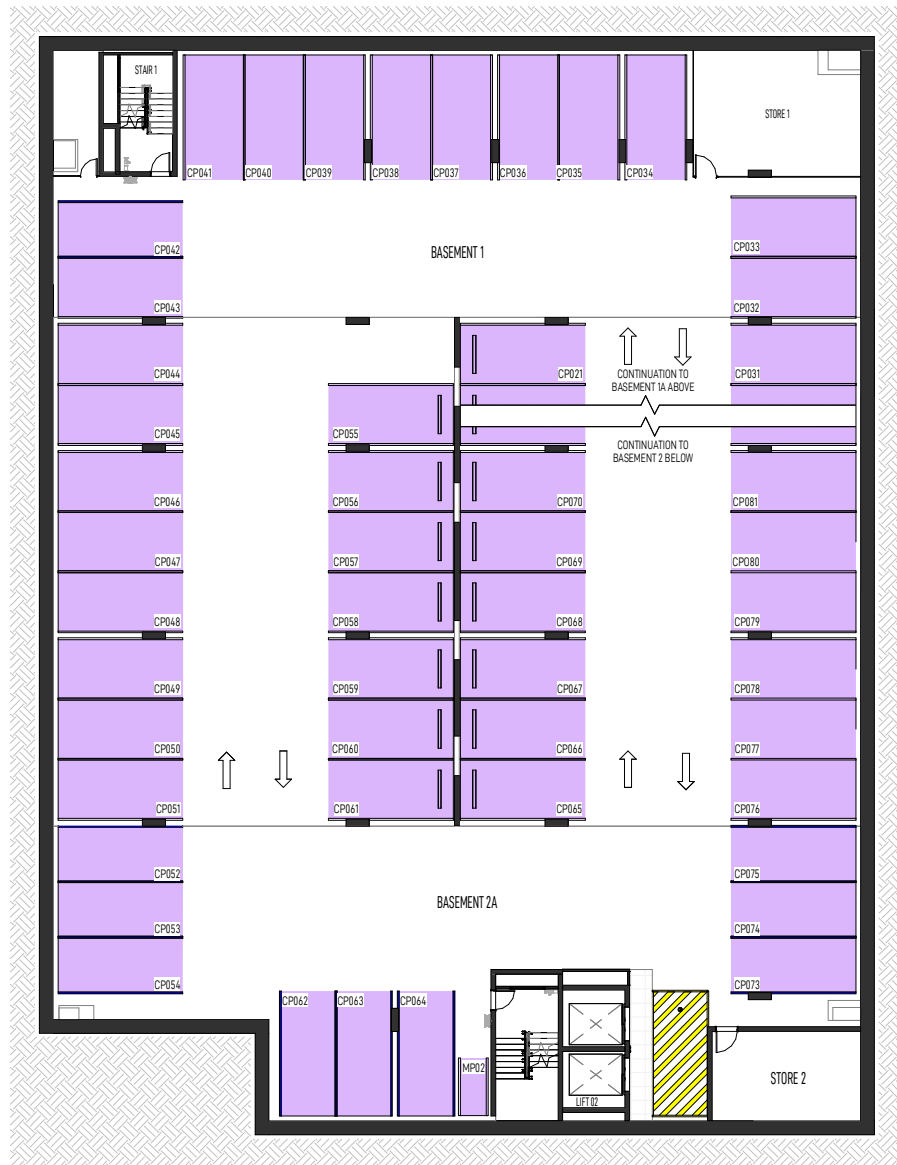
Basement Parking B1



Not to Scale.
 All areas are indicative and subject to final survey.
 Internal layout drawings are indicative only and items
 shown are not included in the purchase.



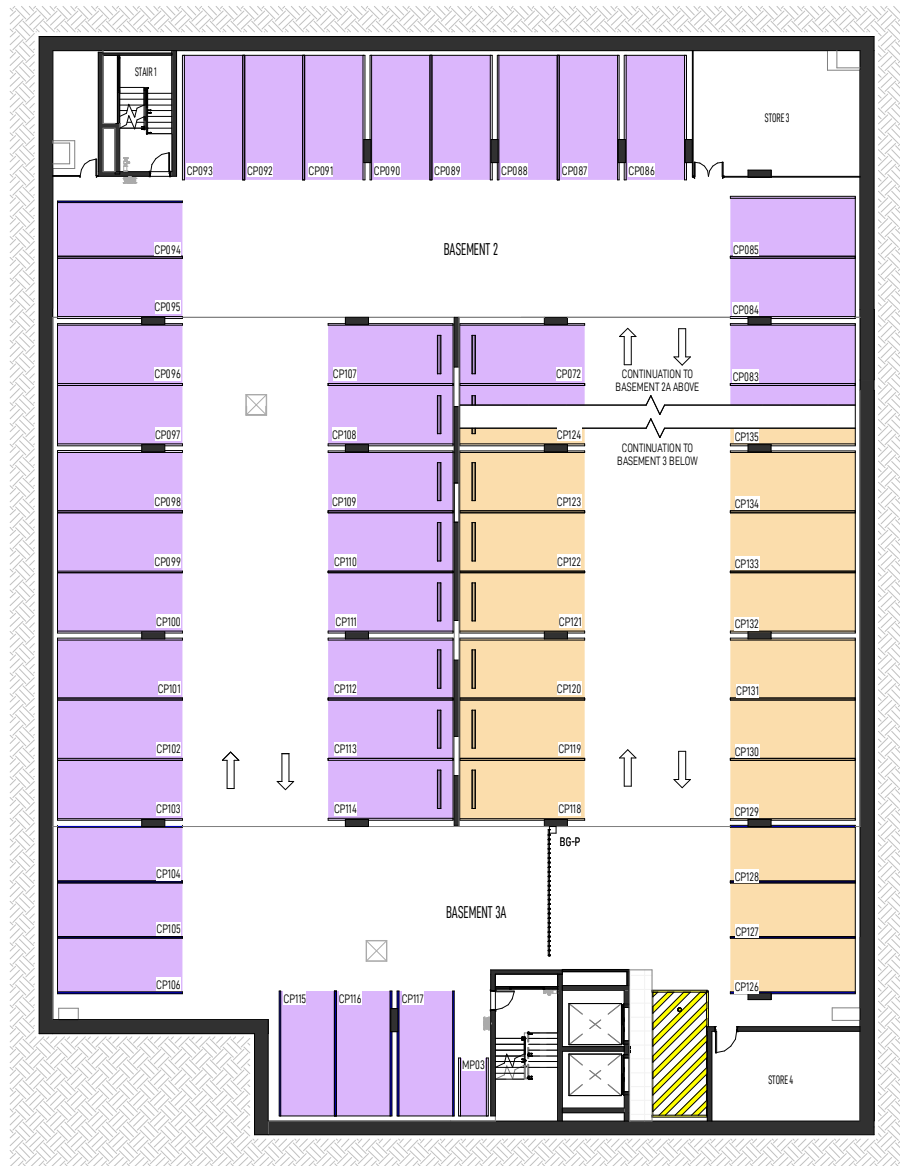
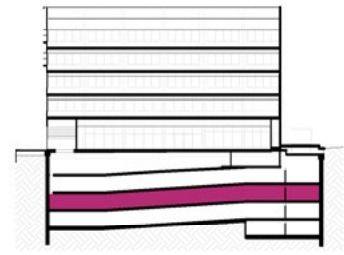
Basement Parking B2



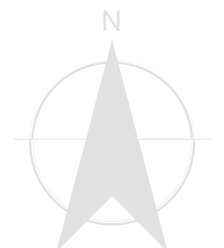
Not to Scale.
All areas are indicative and subject to final survey.
Internal layout drawings are indicative only and items shown are not included in the purchase.



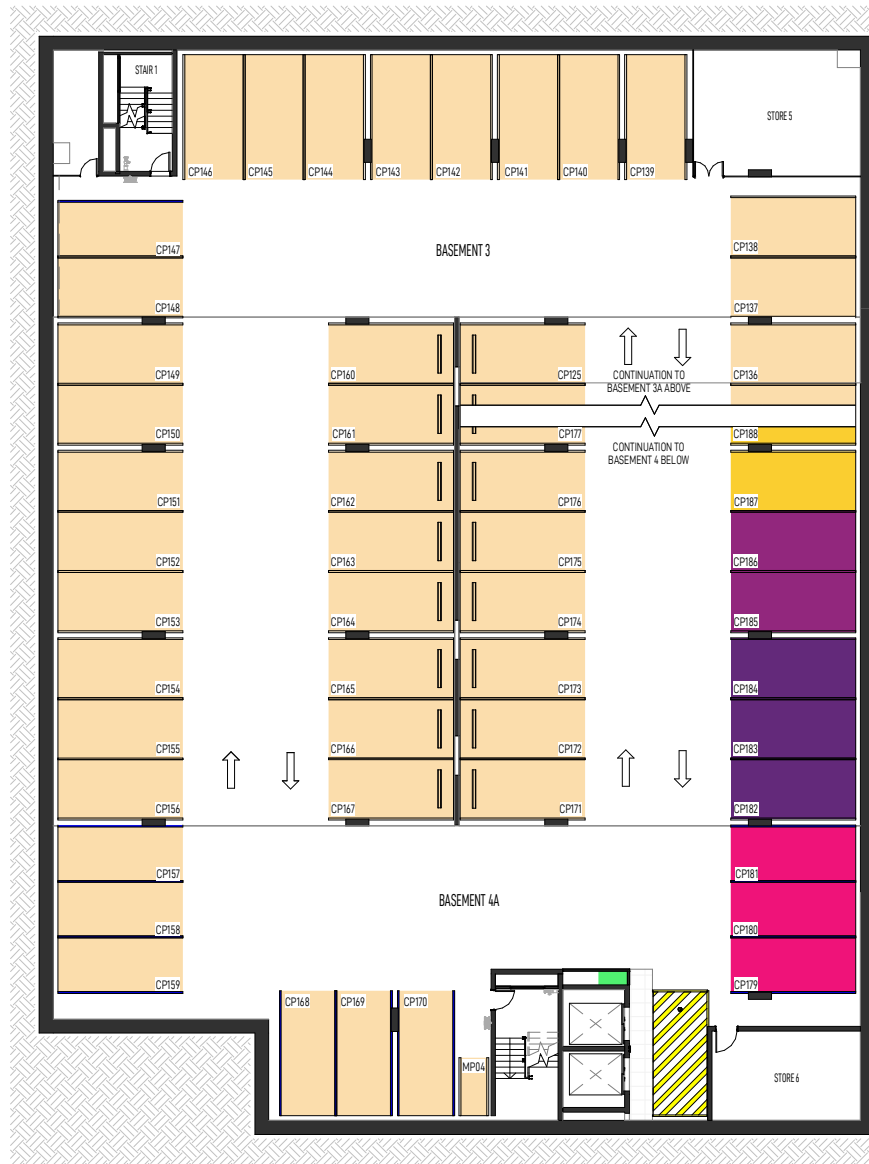
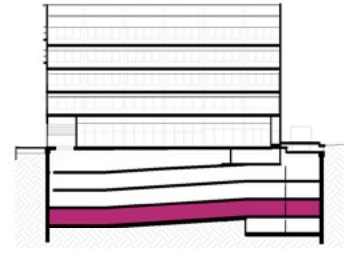
Basement Parking B3



Not to Scale.
All areas are indicative and subject to final survey.
Internal layout drawings are indicative only and items shown are not included in the purchase.



Basement Parking B4

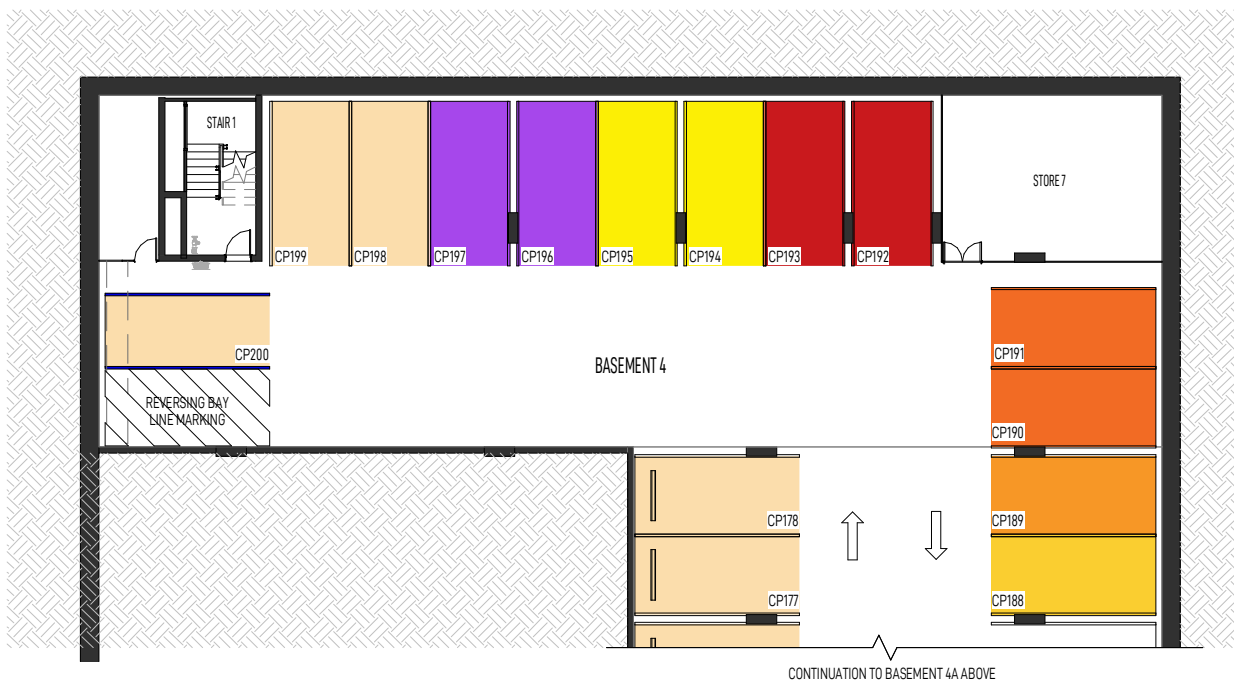
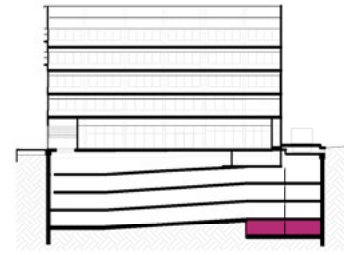


Not to Scale.

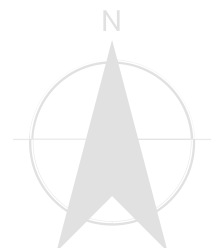
All areas are indicative and subject to final survey.
Internal layout drawings are indicative only and items shown are not included in the purchase.



Basement Parking B4A



Not to Scale.
All areas are indicative and subject to final survey.
Internal layout drawings are indicative only and items shown are not included in the purchase.



Your Practice. Your Way.

We offer a unique end-to-end service that delivers options for turnkey fit-outs: an experience rarely observed in the property and healthcare industries.

We specialise in health and medical projects, including detailed fit-outs that meet the needs of health professionals. With a wealth of experience in the healthcare sector, we are able to offer solutions to our clients as they begin their Health Hub journey.

Services

- Interior design
- Project management
- Layout flow
- Furniture & fitting
- Acoustic design
- Compliance & safety





Creating thriving communities

Chermside Health Hub is a part of the Health Hubs network; an initiative of the Cornerstone Group.

From our beginnings as a family-owned construction company in Southeast Queensland, our story is a journey of passion that is inspired by people in everything we do. Cornerstone Group was founded by Simon Heazelwood in 2005 as Cornerstone Building Developments (CBD).

The company soon expanded working on a wide range of projects in education, health, community facilities, and aged care. Cornerstone has always been driven by its values, creating thriving communities and encouraging a mindset that goes beyond bricks and mortar by seeking to give back.

For over 10 years the health and medical sectors have been Cornerstone's main focus. With the development of 'Health Hubs' it has created an opportunity to bring together general practice, multidisciplinary specialist doctors, allied health, and day hospital facilities.

To learn more about Cornerstone Group, please visit our website.





Leasing & Sales Options Available



Daniel Price
0431 581 071



Avril Meiklejohn
0419 125 808



Elyse Hardy
0423 210 916

www.healthhubs.com.au