

CHARLES ROAD
15.24

Leedwell

6 William Street, Beverley

ESTIMATED GROSS LETTABLE AREA

GROUND FLOOR OFFICE:	96 sq.metres
WAREHOUSE:	322 sq.metres
FIRST FLOOR OFFICE:	223 sq.metres

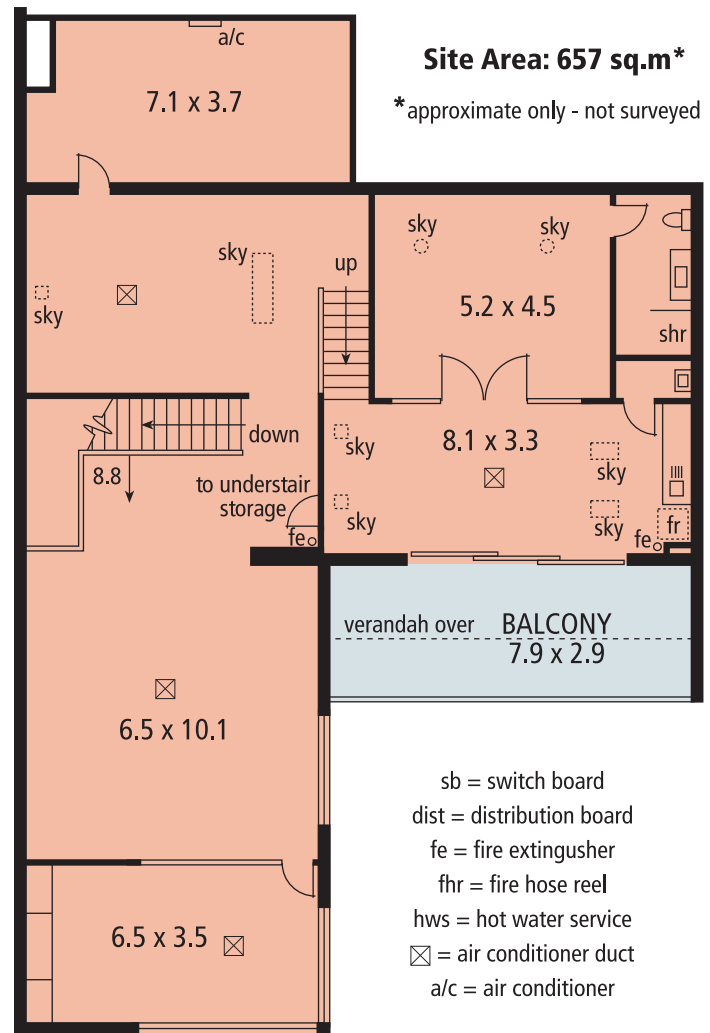
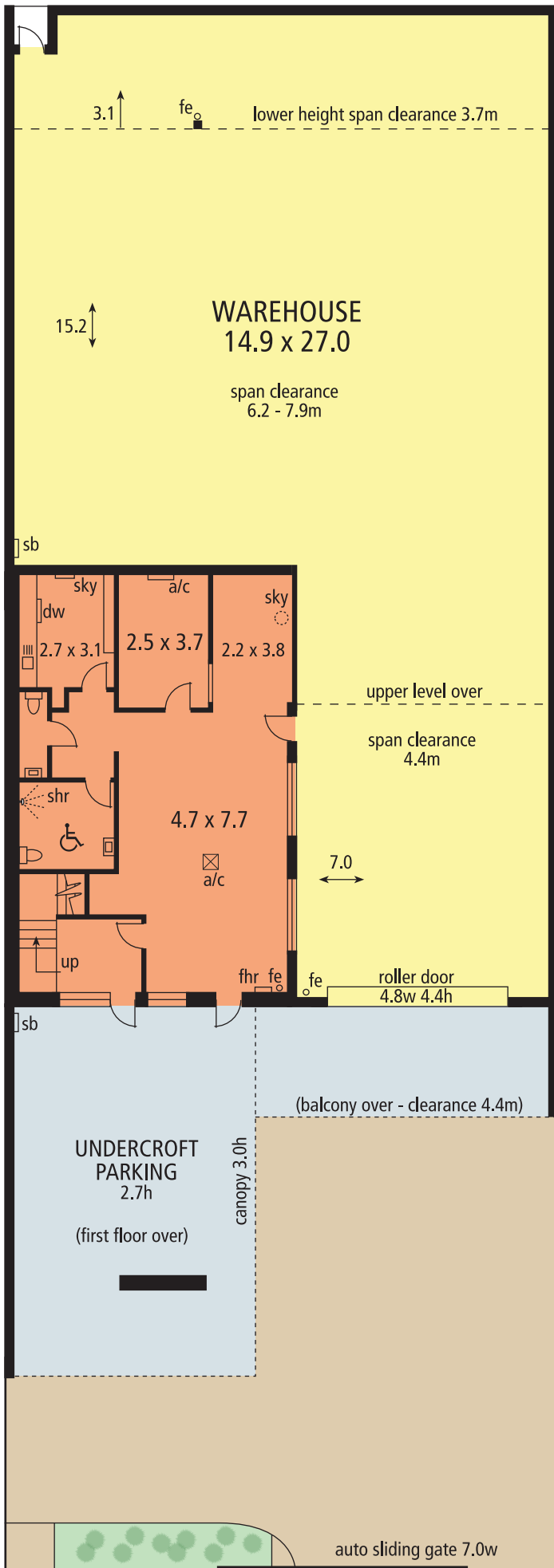
TOTAL GROSS LA: 641 sq.metres

CANOPY:	25 sq.metres
UNDERCROFT PARKING:	73 sq.metres
BALCONY:	25 sq.metres

Complies with the
PCA Method of Measurement

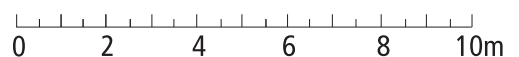
Site Area: 657 sq.m*

*approximate only - not surveyed



FIRST FLOOR

- sb = switch board
- dist = distribution board
- fe = fire extinguisher
- fhr = fire hose reel
- hws = hot water service
- ⊠ = air conditioner duct
- a/c = air conditioner



WILLIAM STREET
15.24