

## Information Schedule

### GROUND FLOOR

#### UNIT 1

Warehouse	309 m <sup>2</sup>
Office & Amenities	48 m <sup>2</sup>
<b>Total Area</b>	<b>357 m<sup>2</sup></b>

#### UNIT 2

Warehouse	499 m <sup>2</sup>
<b>Total Area</b>	<b>499 m<sup>2</sup></b>

#### UNIT 3

Warehouse	367 m <sup>2</sup>
<b>Total Area</b>	<b>367 m<sup>2</sup></b>

**Sub Total Area** 1,223 m<sup>2</sup>

Canopy	365 m <sup>2</sup>
Chemical Store	6 m <sup>2</sup>



SCALE 1 : 400

**Disclaimer :** This plan has been prepared for marketing purposes only. Interested parties should undertake their own enquiries as to the accuracy of the information. Areas are approximate and dimension rounding may result in area discrepancies.

Plan Prepared for:



**MARKETING DRAWING**  
Grd Floor, 30 Blaxland Avenue  
THOMASTOWN, VIC

Date: 23/08/2013

Ref: 50627CB Rev: 0

Scale: 1:400 at A4

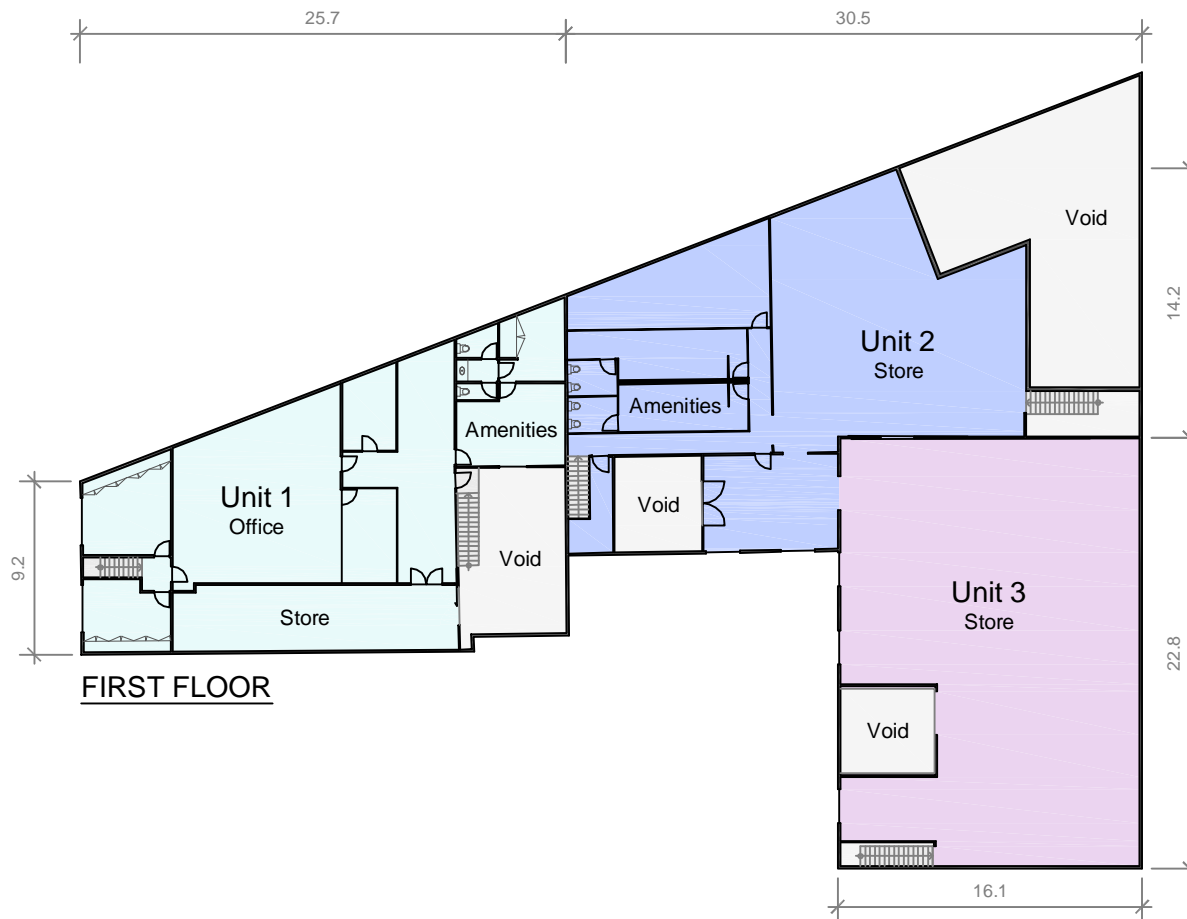
sdney melbourne brisbane adelaide pertl

**REALSERVE**

Real Estate Plans & Surveys

P 03 9415 6566  
F 03 9923 6307

[www.realserve.com.au](http://www.realserve.com.au)



FIRST FLOOR

### Information Schedule

First Floor	
UNIT 1	
Office	209 m <sup>2</sup>
Store	55 m <sup>2</sup>
Amenities	47 m <sup>2</sup>
<b>Total Area</b>	<b>311 m<sup>2</sup></b>
UNIT 2	
Store	280 m <sup>2</sup>
Amenities	53 m <sup>2</sup>
<b>Total Area</b>	<b>333 m<sup>2</sup></b>
UNIT 3	
Store	341 m <sup>2</sup>
<b>Total Area</b>	<b>341 m<sup>2</sup></b>
<b>Sub Total Area</b>	<b>985 m<sup>2</sup></b>



SCALE 1 : 400

**Disclaimer :** This plan has been prepared for marketing purposes only. Interested parties should undertake their own enquiries as to the accuracy of the information. Areas are approximate and dimension rounding may result in area discrepancies.

Plan Prepared for:



**MARKETING DRAWING**  
 First Floor, 30 Blaxland Avenue  
 THOMASTOWN, VIC

Date: 23/08/2013

Ref: 50627CB Rev: 0

Scale: 1:400 at A4

sdney melbourne brisbane adelaide pertl



Real Estate Plans & Surveys

adelaide pertl

P 03 9415 6566  
 F 03 9923 6307

www.realserve.com.au