



91 Halifax Street, Adelaide
ESTIMATED GROSS LETTABLE AREA

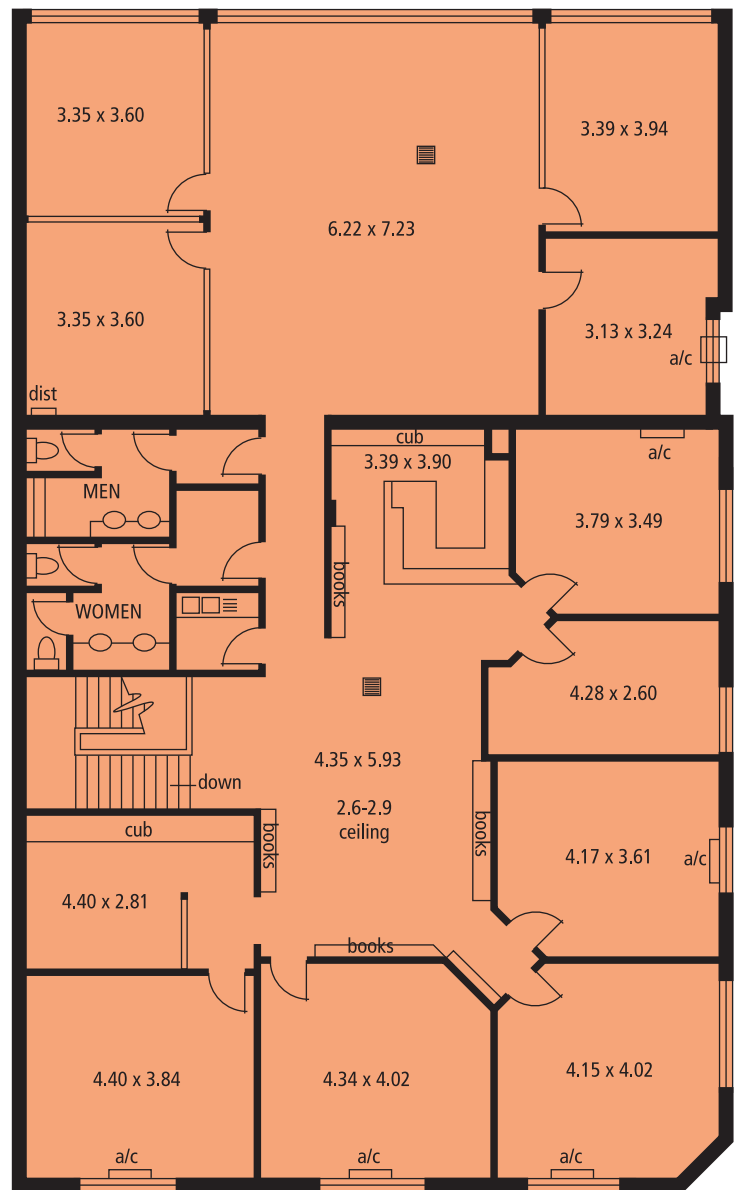
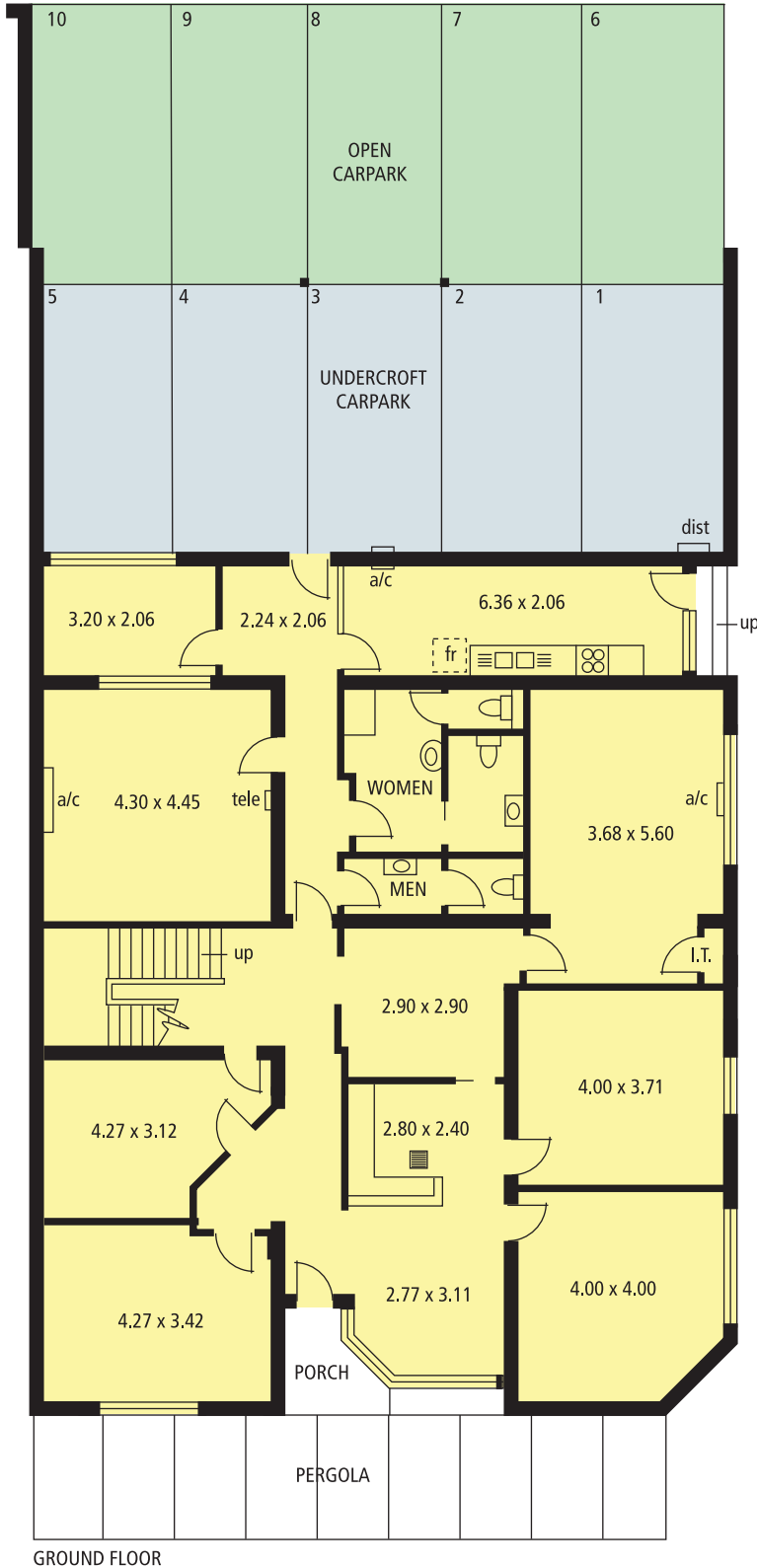
- GROUND FLOOR: 216 sq.metres
- FIRST FLOOR: 302 sq.metres

TOTAL GROSS LA: 518 sq.metres

- UNDERCROFT CARPARK: 70 sq.metres
- OPEN CARPARK: 72 sq.metres

Site Area: 376 sq.metres

Complies with the
PCA Method of Measurement



FIRST FLOOR

