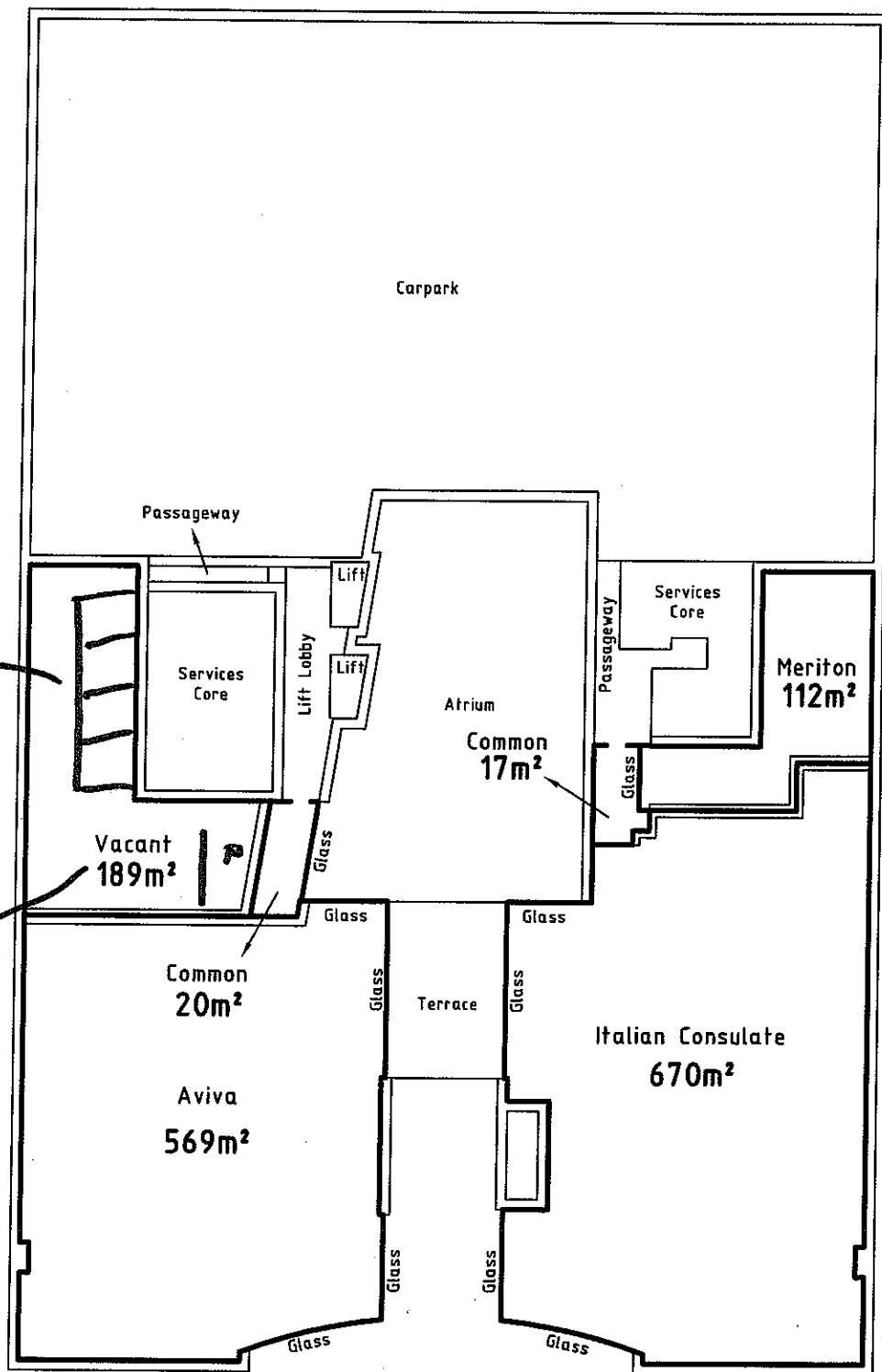


Scale 1:400

Office
Boardroom



Level 1

ST. KILDA ROAD Total Area = **1577m²**

NOTE : Areas have been determined by Interpretation of and in accordance with the Property Council of Australia method of measurement (March 1997 edition) for Gross Lettable Area Retail.

This plan has been prepared to depict the shape of the floor area only. The plan is not suitable for derivation of dimensions.



Survey & Spatial Solutions
Melbourne - Tel 03 8517 9213

KNIGHT FRANK

Surveyed	M. Purbrick	8 December 2004
Drawn	J. Watson	12 January 2005
Checked	M. Purbrick	14 January 2005
Approved		

509 St. Kilda Road
Melbourne
Plan Showing Floor Areas

Drawing No. 4003039

Sheet No. 2 of 8

© Earth Tech Engineering ABN 61 089 482 888

Rev -

4003039.01.dwg

A4