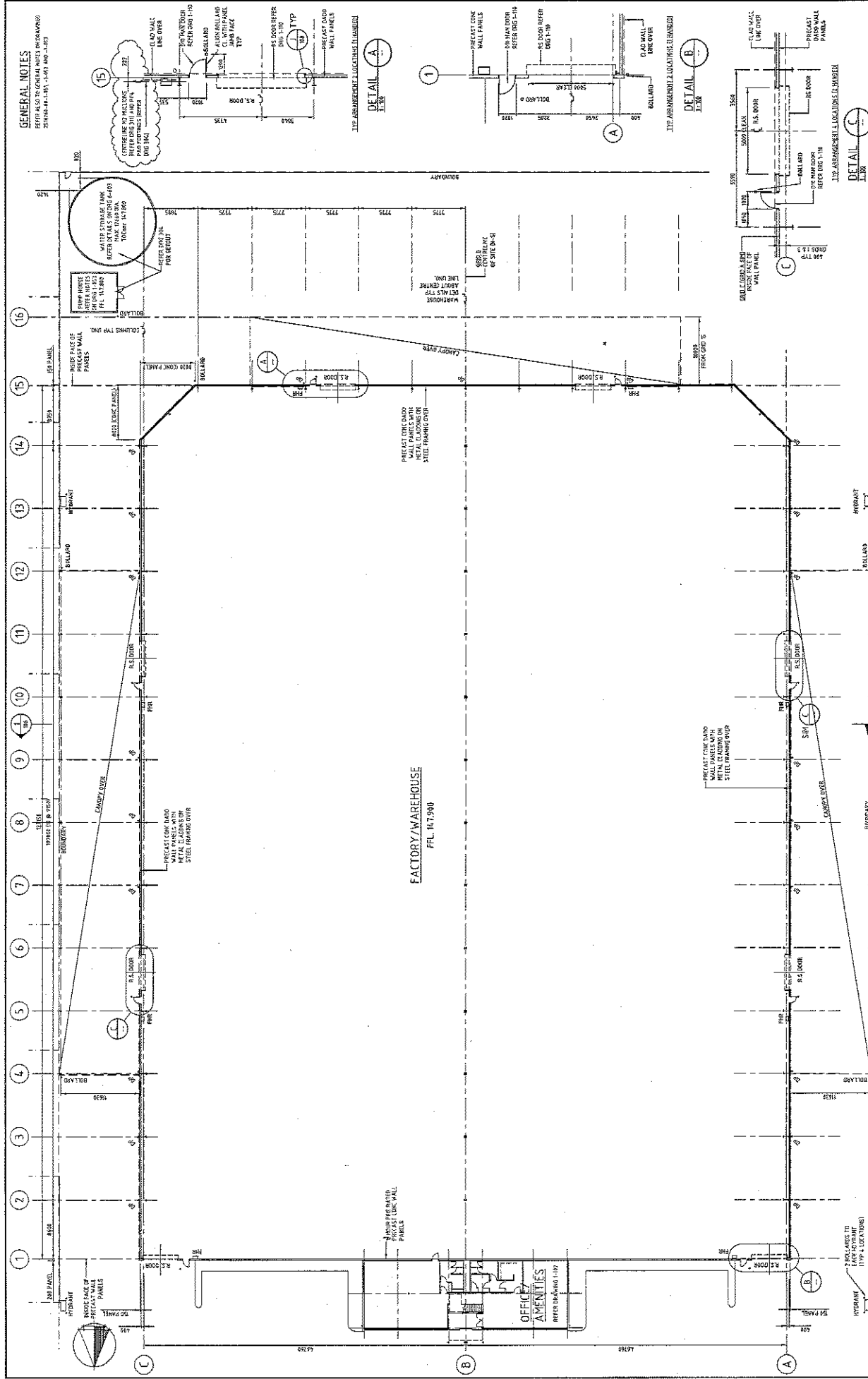
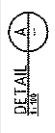


GENERAL NOTES
 REFER TO ALL DRAWINGS
 25/01/83 - 1, 2, 3, 4, 5, 6, 7, 8, 9, 10, 11, 12, 13, 14, 15, 16



FACTORY/WAREHOUSE
 FFL 147900



Rev.	2
Rev.	25/10/26-00-1-101
Chart Drawing No.	FOR CONSTRUCTION
Project	BERTOCCHI WAREHOUSE STAGE 3
Client	Beca Pty Ltd
Architectural	ARCHITECTURAL FLOOR PLAN
Drawn By	H. D. D. 4/83

Bertocchi & Sons Pty. Ltd.
 CENTRAL BUSINESS DISTRICT - MANTON
 MELBOURNE AUSTRALIA
 TEL: 03 9372 1600
 FAX: 03 9372 1540
 WWW.BERTOCCHI.COM.AU

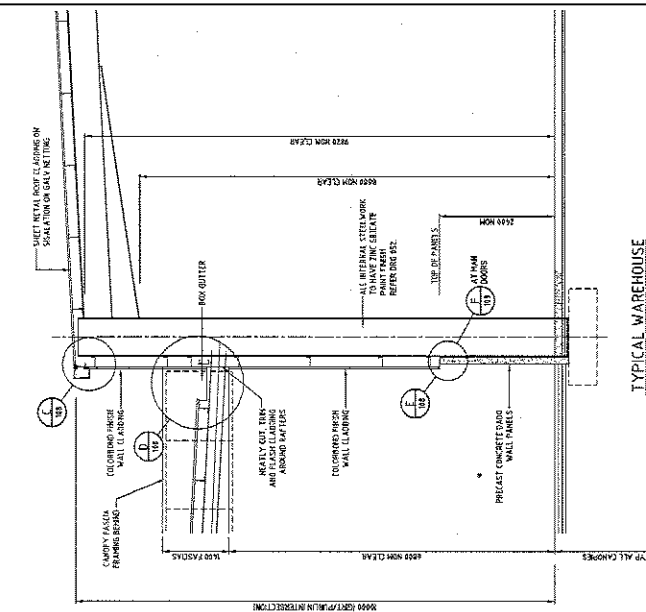
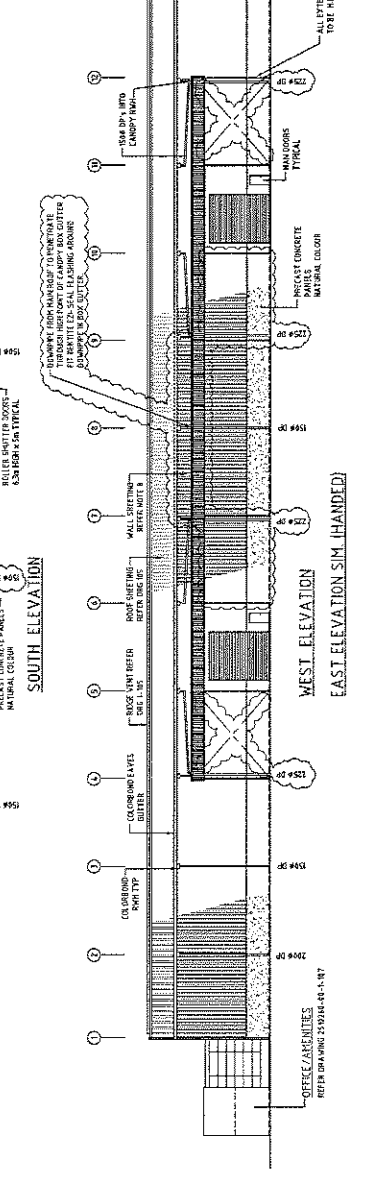
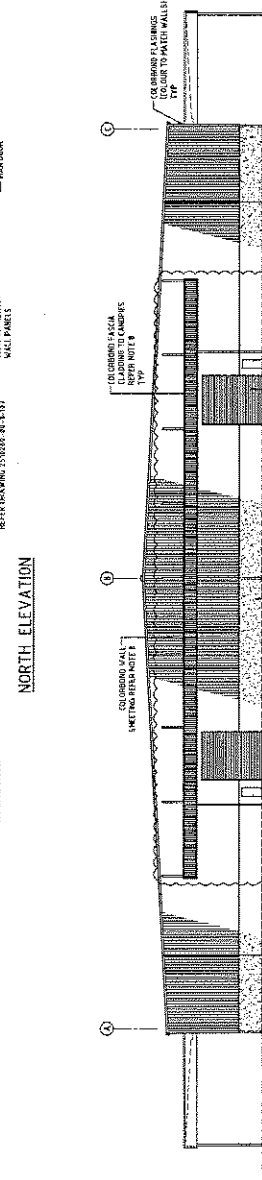
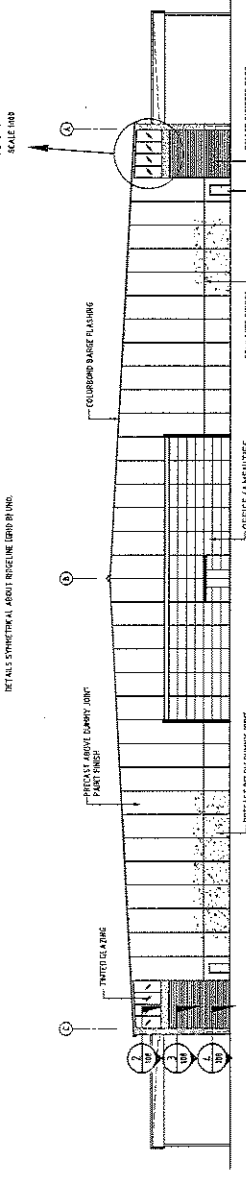
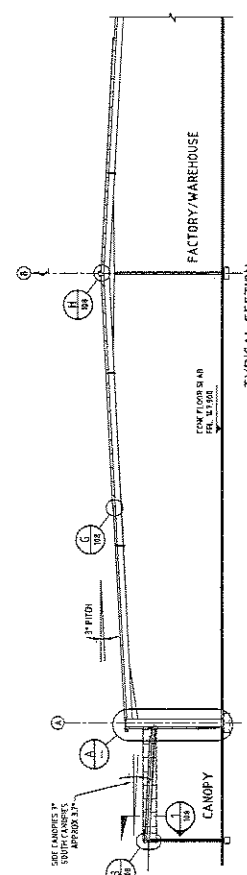
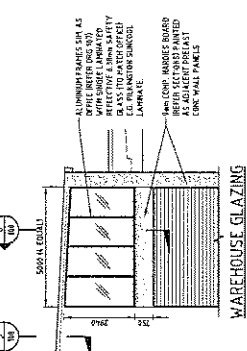
Discipline	Drawn	Checked	Approved	Date
Structural
MEP
Architectural

Bertocchi & Sons Pty. Ltd.
 FREIGHT DRIVE
 SOMERTON VICTORIA

Discipline	Drawn	Checked	Approved	Date
Structural
MEP
Architectural

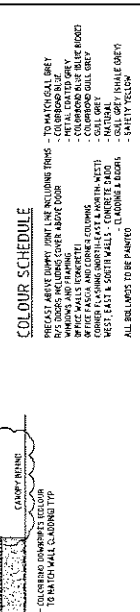
Discipline	Drawn	Checked	Approved	Date
Structural
MEP
Architectural

Discipline	Drawn	Checked	Approved	Date
Structural
MEP
Architectural



- CLADDING NOTES**
- ROOF SHEETING MUST BE APPROVED FOR SAFETY
 - REIN WALL AND FLASH CLADDING TO BE APPROVED
 - SILLATION OF GALLY NETTING REFER REMAINING DRG FOR FINISH
 - COVER TO MATCH ADJACENT WALL CLADDING
 - FLASH GUTTERS TO HAVE APPROVED REDUCED SUPPORT CLIPP.
 - EMERGENCY RAIN REIN TO BE 100 x 100 x 4mm
 - GALVANIZED WIRE MESH BUSH AND WASTES MUST BE USED TO SECURE REIN TO THE WALLS
 - ALL EXTERIOR STEELWORK TO BE GALVANIZED
 - REIN TO MATCH ADJACENT WALLS
 - REIN TO MATCH ADJACENT WALLS
 - DOWMPipes TO BE 4mm COLOURBOND TO MATCH WALLS
 - EXPOSED BRACKETS TO BE APPROVED FOR SAFETY WITH GALVANIZED STEEL PLATE (EACH)

- EXTERNAL PAINTING**
- PRECAST CONCRETE WALL PANELS NOTED AND FINISHED SHEET
MATERIAL FINISH TO BE LEAK SEALER AND TOP COATS
WALL APPLIC.
- CLOUR SCHEDULE**
- PRECAST CONCRETE WALL PANELS INCLUDING TRIMS - TO MATCH GALLY NETTING
REIN WALLS INCLUDING COVER ABOVE DOOR
OFFICE WALLS CONCRETE
OFFICE WALLS (CONCRETE)
OFFICE WALLS (CONCRETE)
OFFICE WALLS (CONCRETE)
OFFICE WALLS (CONCRETE)
OFFICE WALLS (CONCRETE)
OFFICE WALLS (CONCRETE)
OFFICE WALLS (CONCRETE)
OFFICE WALLS (CONCRETE)
OFFICE WALLS (CONCRETE)
OFFICE WALLS (CONCRETE)



FOR CONSTRUCTION

Project: BERTOCCI WAREHOUSE STAGE 3

File: ARCHITECTURAL ELEVATIONS AND SECTION

Issue No.: 251026-00-1-106

Beca Pty Ltd
CONSULTING ENGINEERS & ARCHITECTS
105 COLLEGE AVENUE
MELBOURNE VICTORIA 3000
Tel: 03 9321 6400
Fax: 03 9321 6400
www.eca.com.au

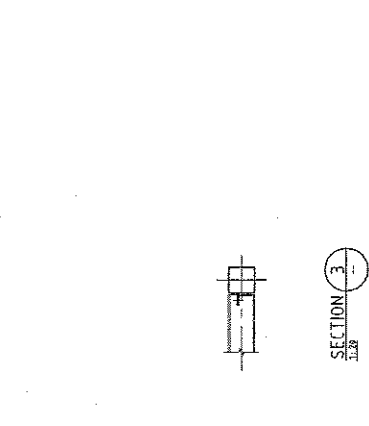
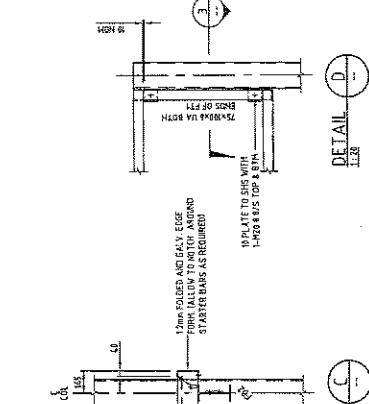
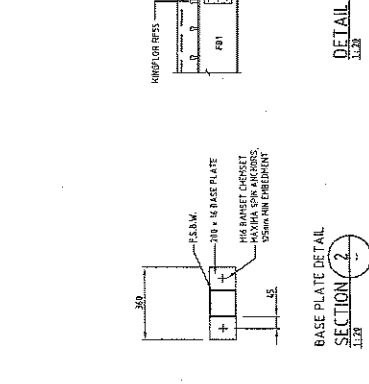
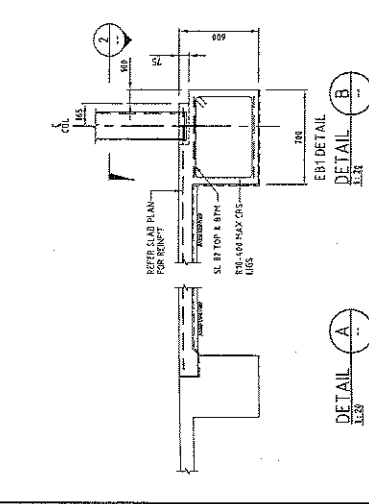
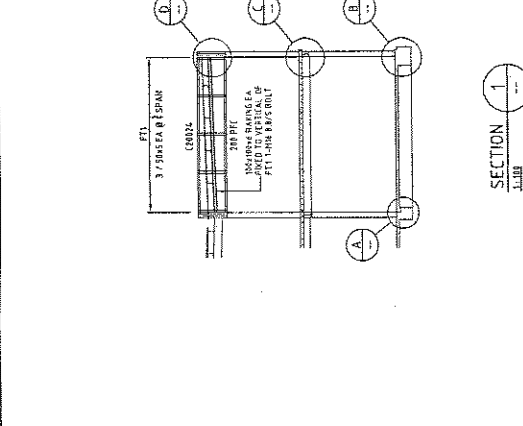
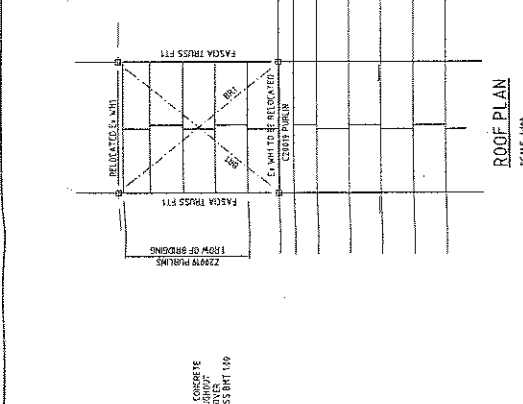
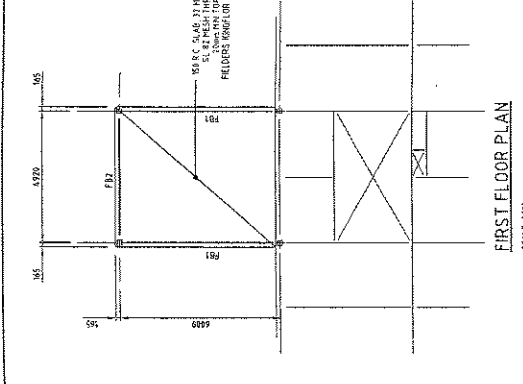
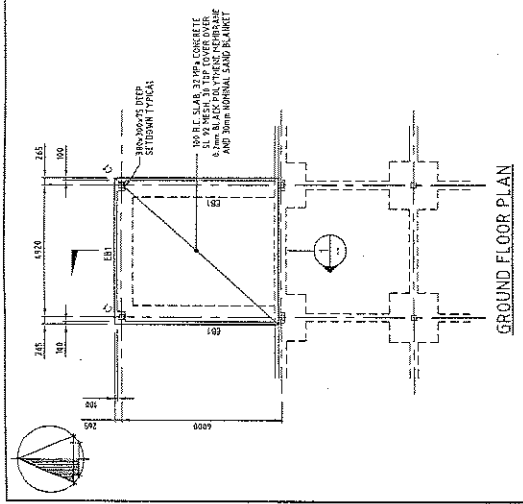
BERTOCCI & SONS PTY. LTD.
FREIGHT DRIVE
SOMERTON VICTORIA

DATE	BY	DESCRIPTION
10/03/09	AK	ISSUED FOR CONSTRUCTION
10/03/09	AK	ISSUED FOR CONSTRUCTION
10/03/09	AK	ISSUED FOR CONSTRUCTION
10/03/09	AK	ISSUED FOR CONSTRUCTION
10/03/09	AK	ISSUED FOR CONSTRUCTION
10/03/09	AK	ISSUED FOR CONSTRUCTION
10/03/09	AK	ISSUED FOR CONSTRUCTION

NO.	DESCRIPTION	DATE
1	AMEND CONSTRUCTION - PART DISTRIBUTION	10/03/09
2	AMEND CONSTRUCTION - PART DISTRIBUTION	10/03/09
3	AMEND CONSTRUCTION - PART DISTRIBUTION	10/03/09
4	AMEND CONSTRUCTION - PART DISTRIBUTION	10/03/09
5	AMEND CONSTRUCTION - PART DISTRIBUTION	10/03/09
6	AMEND CONSTRUCTION - PART DISTRIBUTION	10/03/09
7	AMEND CONSTRUCTION - PART DISTRIBUTION	10/03/09
8	AMEND CONSTRUCTION - PART DISTRIBUTION	10/03/09
9	AMEND CONSTRUCTION - PART DISTRIBUTION	10/03/09
10	AMEND CONSTRUCTION - PART DISTRIBUTION	10/03/09

MARK	SIZE	REMARK
C1	300x300x40 R/S	
F01	316 UB 40	3-HIGHS RAYS ENDING IN CLEAR PLATE
F02	250 UB 25	2-HIGHS RAYS ENDING IN CLEAR PLATE
F03	200 R/C	
B01	129 HS 100	E-WASHER AT EACH END

MEMBER	SIZE	REMARK
C1	300x300x40 R/S	
F01	316 UB 40	3-HIGHS RAYS ENDING IN CLEAR PLATE
F02	250 UB 25	2-HIGHS RAYS ENDING IN CLEAR PLATE
F03	200 R/C	
B01	129 HS 100	E-WASHER AT EACH END



NO.	DATE	BY	CHKD	DESCRIPTION
1	25/10/2004	J.L.S.	J.L.S.	ISSUED FOR CONSTRUCTION
2				
3				
4				
5				
6				
7				
8				
9				
10				
11				
12				
13				
14				
15				
16				
17				
18				
19				
20				
21				
22				
23				
24				
25				

NO.	DATE	BY	CHKD	DESCRIPTION
1	25/10/2004	J.L.S.	J.L.S.	ISSUED FOR CONSTRUCTION
2				
3				
4				
5				
6				
7				
8				
9				
10				
11				
12				
13				
14				
15				
16				
17				
18				
19				
20				
21				
22				
23				
24				
25				

NO.	DATE	BY	CHKD	DESCRIPTION
1	25/10/2004	J.L.S.	J.L.S.	ISSUED FOR CONSTRUCTION
2				
3				
4				
5				
6				
7				
8				
9				
10				
11				
12				
13				
14				
15				
16				
17				
18				
19				
20				
21				
22				
23				
24				
25				

NO.	DATE	BY	CHKD	DESCRIPTION
1	25/10/2004	J.L.S.	J.L.S.	ISSUED FOR CONSTRUCTION
2				
3				
4				
5				
6				
7				
8				
9				
10				
11				
12				
13				
14				
15				
16				
17				
18				
19				
20				
21				
22				
23				
24				
25				

Project: BERTOCCHI WAREHOUSE STAGE 3
 Client: Bertocchi Warehouse Pty Ltd
 Date: 25/10/2004
 Drawing No: 2510260-00-3-325