

DIAGRAM B
Not to Scale

DIAGRAM C
Not to Scale

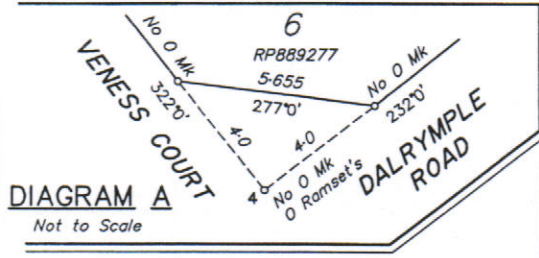


DIAGRAM A
Not to Scale

PERMANENT MARKS

STN	TO	BEARING	DISTANCE	NUMBER
2	OPM fd	213°20'	10.788	136182
6	PM	300°46'25"	19.075	153466

REFERENCE MARKS

STN	TO	ORIGIN	BEARING	DISTANCE
1	O Ramset in kerb	RP884316	232°0'	0.395
2	OIP	RP885997	232°0'	0.448
3	Bolt in kerb		142°14'30"	4.215
3	OIP gone	RP885997	64°01'30"	4.8
4	O Ramset in kerb	RP889277	232°0'	0.576
4	O Ramset in kerb	RP889277	142°0'	0.567
5	O Ramset in kerb	RP889277	266°50'	3.472
5	O Ramset in kerb	RP889277	180°0'	17.748
5	Ramset in kerb		295°54'40"	18.165
6	O Ramset in kerb	RP889277	180°0'	0.088
6	O Ramset in kerb	RP889277	90°0'	0.122
7	OIP (inaccessible)	RP889277	90°0'	1.0
		Under Conc.		
8	O Ramset in kerb	RP889277	0°0'	4.68
9	O Bolt in Bit	RP889277	at	Stn
10	O Ramset in kerb	RP889277	270°0'	4.573

Rowlands, Surveys Pty. Ltd. (ACN. 010. 025. 260), hereby certify that the Company has by
John James Rowlands
(Cadastral Surveyor)
surveyed the land comprised in this plan and that the plan is accurate, that the said survey was performed in accordance with the Survey and Mapping Infrastructure Act 2003 and Surveyors Act 2003 and associated Regulations and Standards and that the said survey was completed on . B/7/2004 .



John James Rowlands
Director/
Cadastral Surveyor
Laurence John Nolan
Director/
Cadastral Surveyor

Date: 7.10.04

PLAN OF
Lot 3 & 17 and
Emt A in Lot 3
cancelling Lot 3 on RP889276
and Lot 17 on RP889280
PARISH: COONAMBELAH COUNTY: Elphinstone
Meridian: of RP889280 F/N's: NONE

Scale: 1 : 800
Format: STANDARD
SP168597
Plan Status:



SP168597

