

FOR LEASE

Manning Buildings Redevelopment
A Grade Office Premises
Fremantle CBD

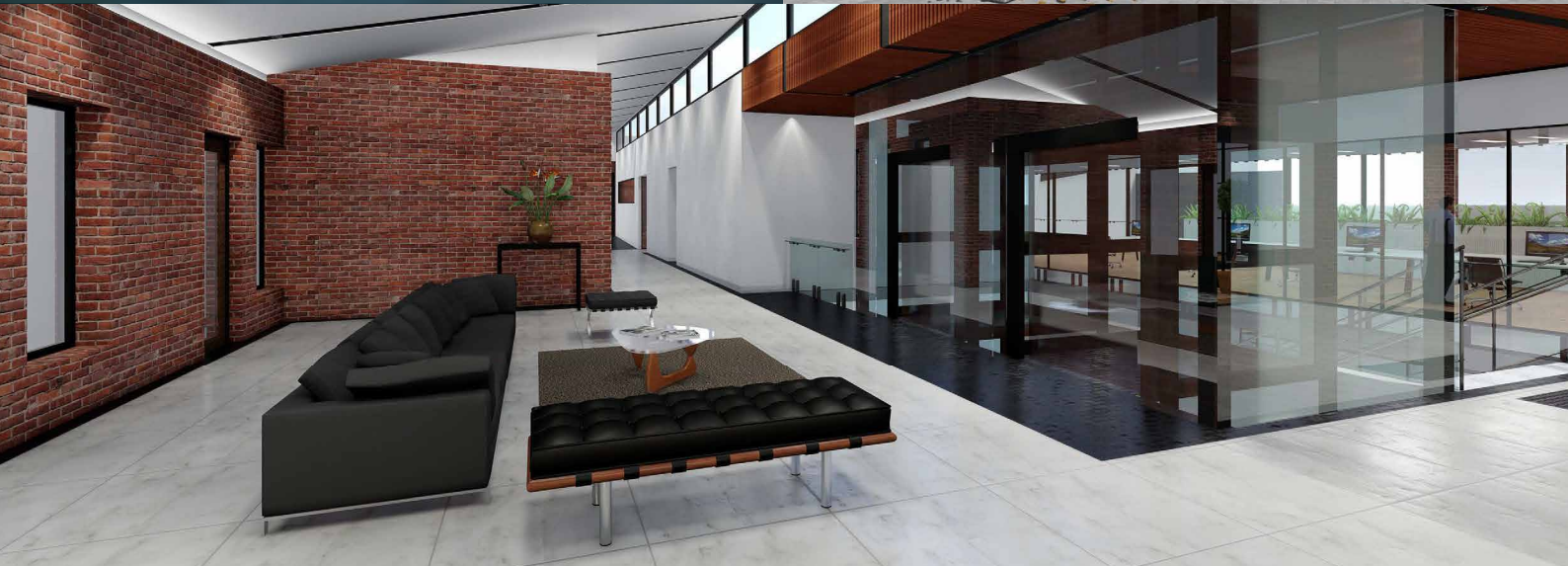


Incorporating Manning Buildings which is strategically located between Market Street, High Street Mall and William Street, in the commercial hub of Fremantle. This spectacular new office/retail redevelopment shall embrace the historic charm of the building with state-of-the-art services, and generous communal breakout areas for tenants, which is poised to re-establish the striking, Heritage beauty of the Manning Buildings.

For further information

FOR LEASE

Manning Buildings
Redevelopment
A Grade Office Premises
Fremantle CBD



Highlights:

- Level 1 – 43 sqm up to 1,130 sqm plus
- A Grade Premises, Projected Minimum 4 Stars NABERS Rating
- Energy Efficient Designed
- End of Trip Facilities, with Secure Bike Racks / Showers / Lockers
- Dual Lifts
- Roof Top Gardens
- Onsite Parking
- Central Fremantle CBD Location



Public Transport



Cafes



Parking



Shopping



End of Trip Facilities



Bike Storage



NABERS



Disability Access

Information in this document may have been provided to Norfolk Commercial and Silverleaf Investments, and we do not warrant that it is accurate. Figures quoted are approximate only and financial information is provided without possible impact of GST. Interested Parties should make their own enquiries and seek independent advice before acting. This document is not an offer or part of a contract for sale.

For further information