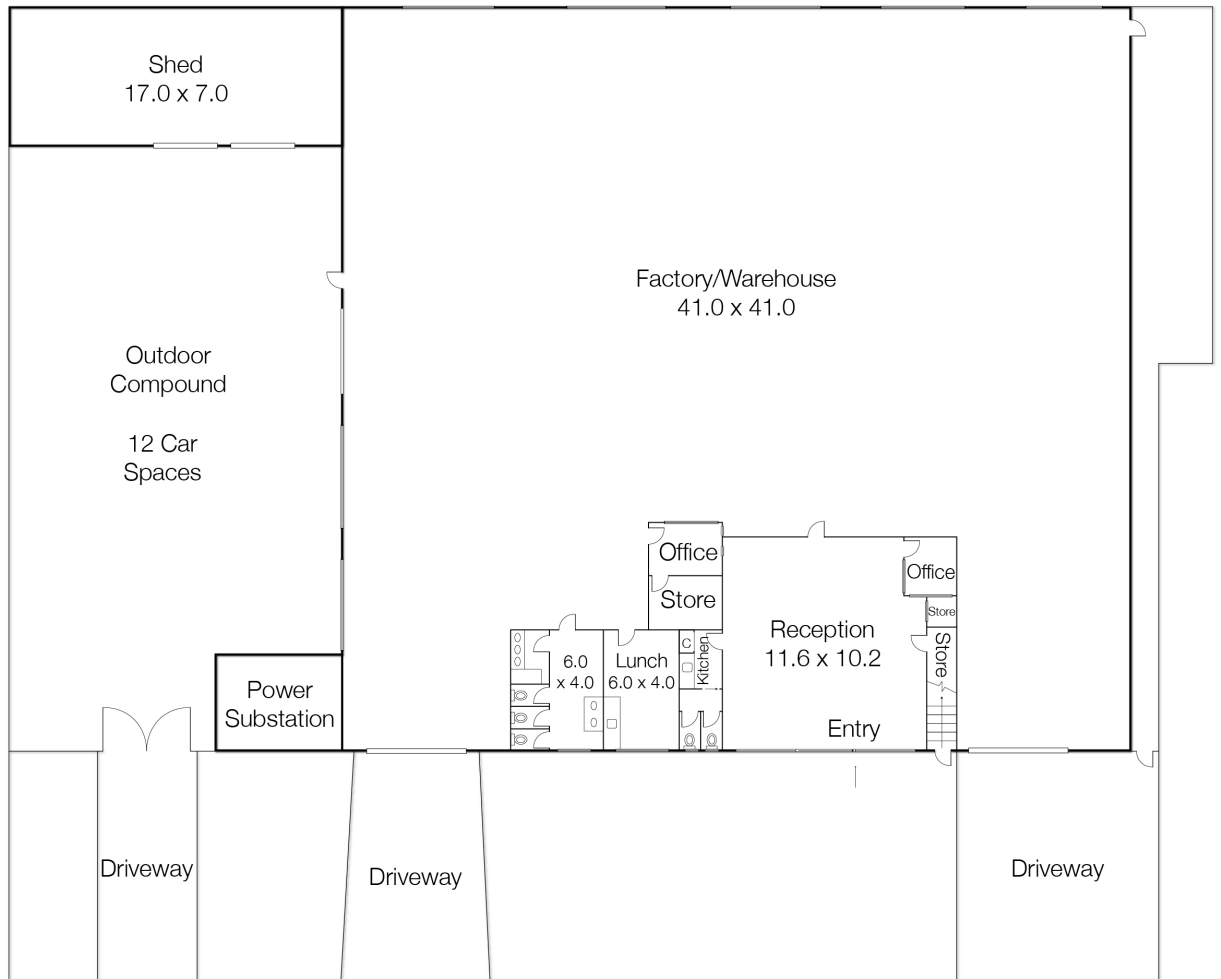


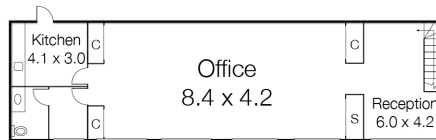


FLOOR PLAN

4-8 HAYWARD ROAD, FERNTREE GULLY



Ground Floor



First Floor

PLAN SCHEDULE:

TOTAL BUILDING AREA	1,910 sqm*
WAREHOUSE\SHOWROOM & AMENITIES	1,705 sqm*
OFFICE 1ST FLOOR	85 sqm*
ADDITIONAL GARAGES	120 SQM*
LAND AREA	3,136 sqm*

*All measurements and sizes are approximate only.

