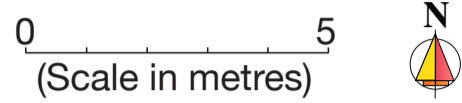


**24 Taminga Street, Regency Park
Building 1 / Offices**

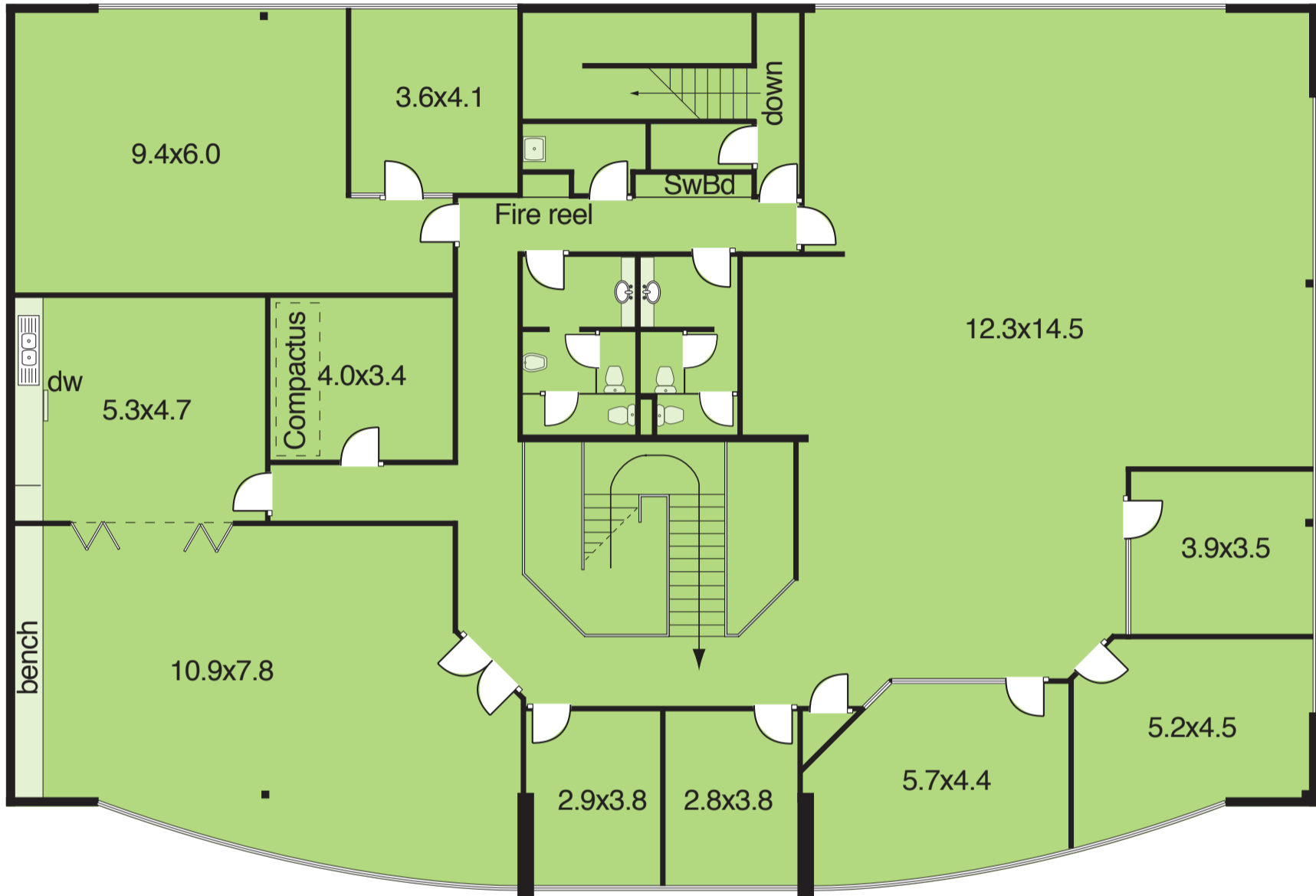
ESTIMATED GROSS LETTABLE AREA

Ground Floor	511 sq.metres
First Floor	522 sq.metres
Warehouse	500 sq.metres
<hr/>	
Total Gross L.A.	1,533 sq.metres
Site (approx.)	2,860 sq.metres

Complies with the PCA Method of Measurement



First Floor



Ground Floor

