



BENNETT + BENNETT

Property Consultants, Surveyors + Town Planners

All mail to: PO Box 5021, GCMC., Qld. 9726
mail@bennettandbennett.com.au
BBH Pty. Ltd. A.C.N. 010 427 531

GOLD COAST OFFICE 95 Upton Street, Bundall, 4217 Ph (07) 5574 0733 Fax (07) 5574 0202	COOMERA OFFICE 9 Jowett Street, Coomera, 4209 Ph (07) 5573 5173 Fax (07) 5529 4342	IPSWICH OFFICE Suite 5, Level 3, 490 Upper Edward St. Spring Hill, 4004 Ph (07) 3839 7200 Fax (07) 3839 7277	BRISBANE OFFICE 5-11 Downs Street North Ipswich, 4305 Ph (07) 3202 1575 Fax (07) 3202 1576
--	---	---	---

Rev	Date

- NOTES:**
1. Drawn to Scale on A3 sheet
 2. Lease area measured in accordance with the P.C.A. recommendations for N.L.A. (Nett Lettable Area.)
 3. Title Reference : 16971117.
 4. Adjoining tenancies shown have been compiled from other sources and are diagrammatic only.
 5. Lease Boundaries are defined by structural elements, distances shown are indicative only unless noted otherwise.

TITLE

PLAN OF LEASE AREA N1
being part of Lot 71 (Level N,
Tenth Floor) on BUP7596.

CLIENT

De Martini Fletcher

Drawn	JPC	Parish	NORTH BRISBANE
Surv'd	CJP	County	STANLEY
Authorised		Job Ref.	09255
L/Book		Comp File	09255
Date	21.08.2009	Dwg File	09255LEA1
SCALE	1:250	PLAN No.	
		Rev.	

I, Christopher Terence Swane,
cadastral surveyor/director of
BBH Pty Ltd (ACN 010 427 531),
certify that the details shown
on this sketch plan are correct.

Swane

Cadastral Surveyor/Director

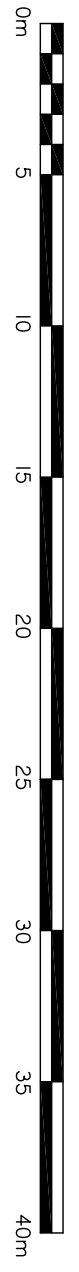
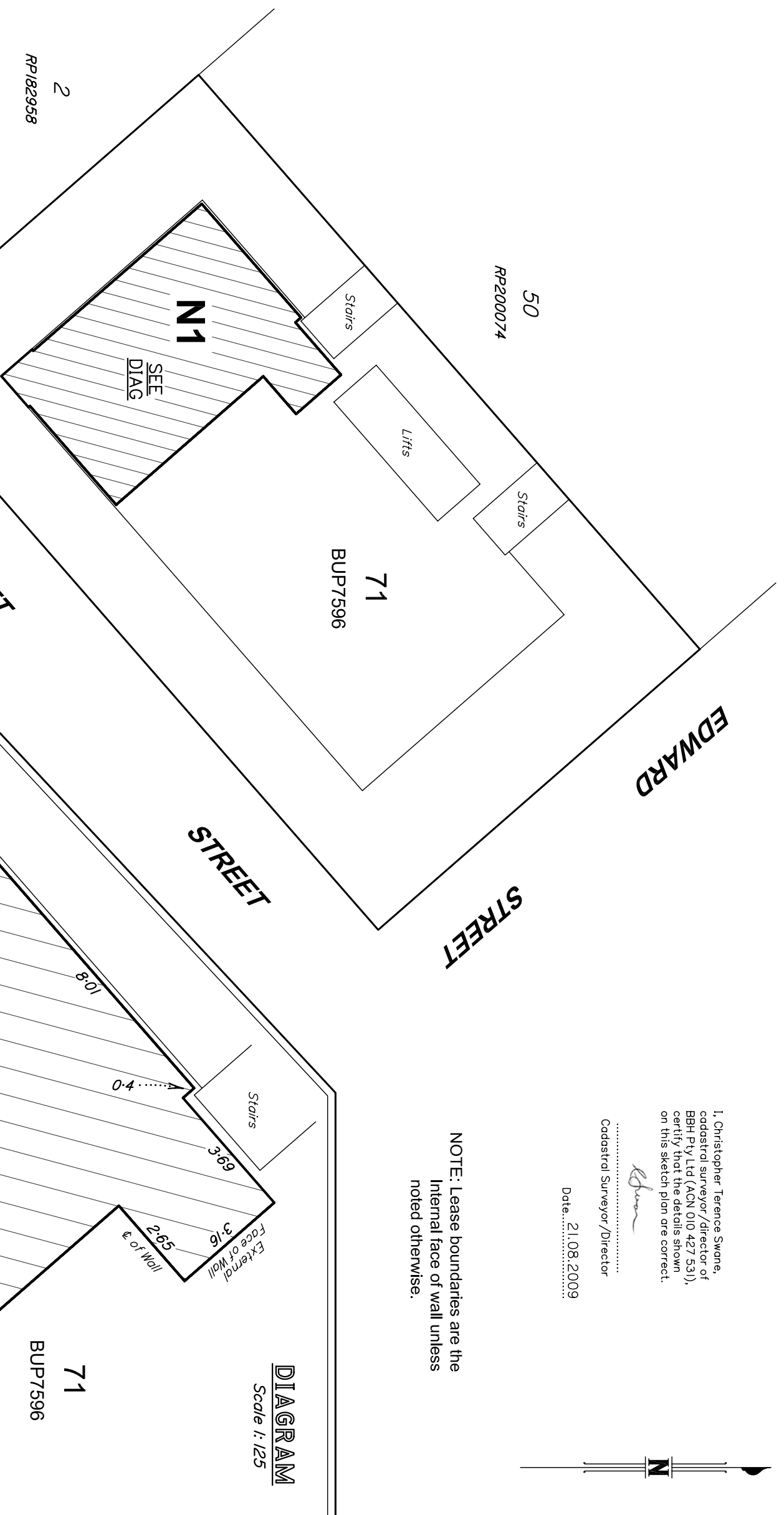
Date 21.08.2009



NOTE: Lease boundaries are the
Internal face of wall unless
noted otherwise.

DIAGRAM

Scale 1:125



SCALE 1:250