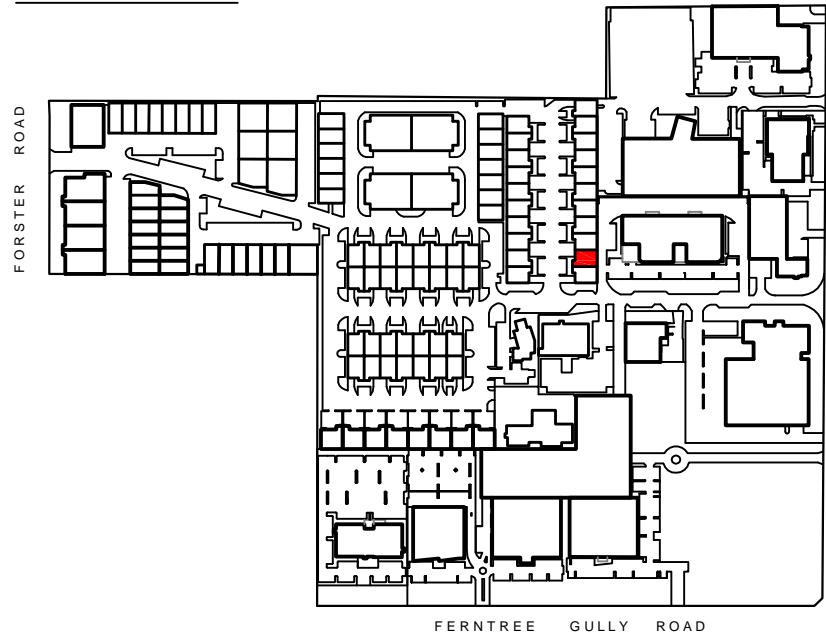


LOCATION MAP: NTS



LETTABLE AREA PLAN FOR UNIT 102, AXXESS CORPORATE PARK, MOUNT WAVERLEY, VIC

SCHEDULE OF AREAS

UNIT 102	
GROUND LEVEL	
WAREHOUSE	201.3 m ²
OFFICE	33.8 m ²
AMENITIES	11.9 m ²
FIRST LEVEL	
OFFICE	134.1 m ²
STORE	58.7 m ²
TOTAL AREA	439.8 m²

LETTABLE AREA



METHOD OF MEASUREMENT

AREAS HAVE BEEN CALCULATED IN ACCORDANCE WITH THE PROPERTY COUNCIL OF AUSTRALIA (PCA) METHOD OF MEASUREMENT FOR LETTABLE AREA (MARCH 1997)

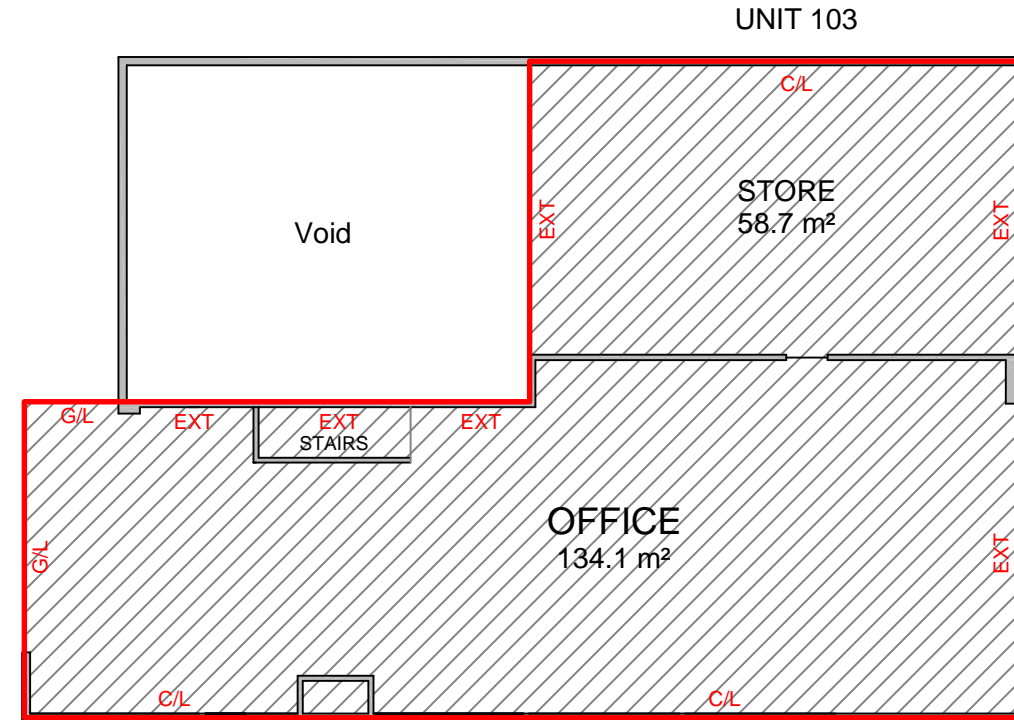
(SURVEY DATE 17/04/2013)

GUIDELINES USED

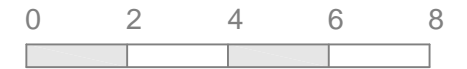
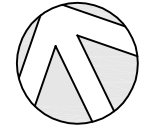
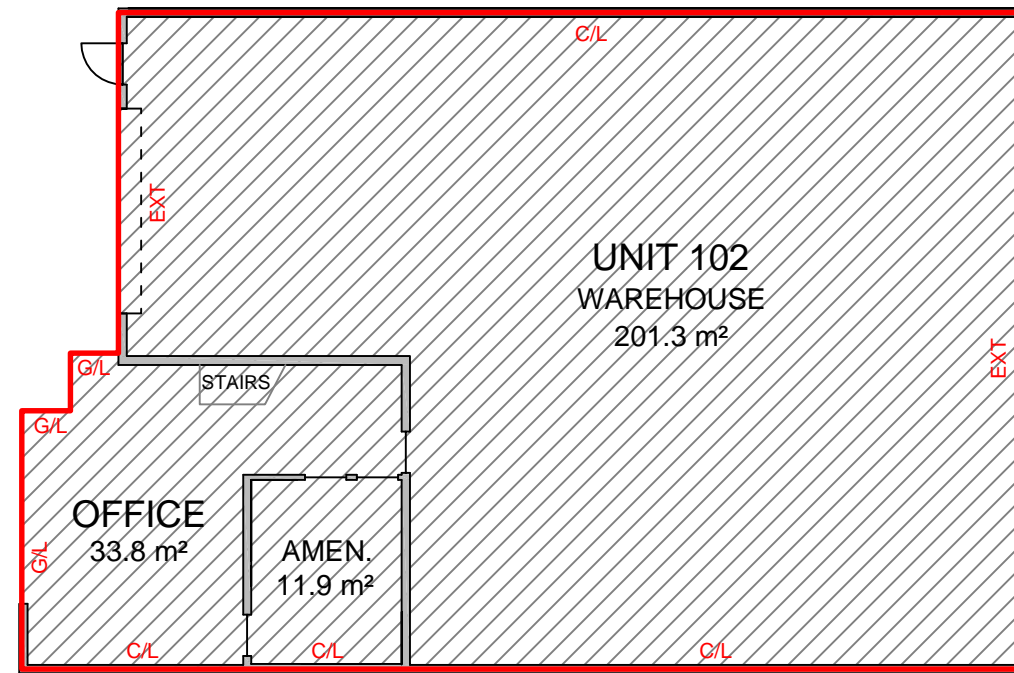
GROSS LETTABLE AREA

- INT - INTERNAL FACE
- EXT - EXTERNAL FACE
- C/L - CENTRELINE WALL
- G/L - GLASS LINE
- LTP - LINE OF TENANCY PRODUCED

FIRST LEVEL



GROUND LEVEL



SCALE 1 : 150

PLAN PREPARED FOR:

LETTABLE AREA PLAN
UNIT 102, AXXESS CORPORATE PARK
MOUNT WAVERLEY, VIC

DATE: 17/04/2013	
REF: 43539	REV: 0
DRAWN: AM	CHECKED: IN
SCALE: 1:150 @ A3	SHEET: 1

sydney canberra **melbourne** brisbane adelaide perth

REALSERVE

Real Estate Plans & Surveys

P 03 9415 6565
F 03 9923 6307

www.realserve.com.au