

# FREEHOLD PHYSIOTHERAPY CENTRE

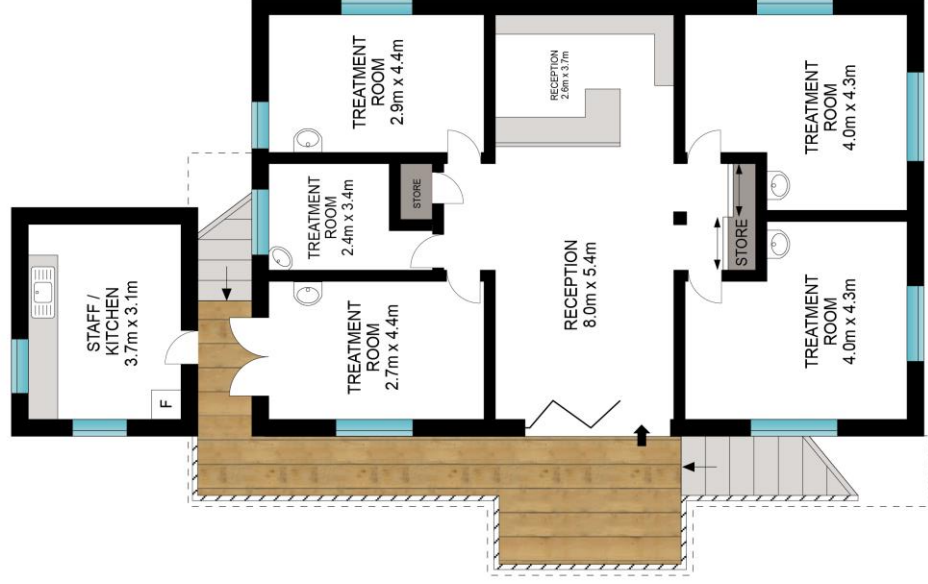


|                            |   |
|----------------------------|---|
| <b>Address:</b>            | 28 Brisbane Street, Murwillumbah NSW 2484                                 |
| <b>Registered Plan:</b>    | Lot 9 DP 6695   |
| <b>Zoning:</b>             | B4 Mixed Use  |
| <b>Land Size:</b>          | 465m <sup>2</sup>   |
| <b>Services:</b>           | Garbage, sewer, water, electricity, internet                              |
| <b>Council Rates:</b>      | \$2,750.00 per annum approximately  |
| <b>Method of Sale:</b>     | The property is offered for sale via Private Treaty.                      |
| <b>Access to property:</b> | Contact Bernice Melnikas —0408 088 262<br>bmelnikas.kingscliff@ljh.com.au |

This information is true and correct as at 06/04/2021 The information and figures contained in this report have been compiled from information provided by the vendor and other reputable sources. No warranty is given to their accuracy and all figures are subject to change without notice. Prospective purchasers are urged to rely on their own enquiries.



GROUND FLOOR



UPPER FLOOR



UPPER (INT/EXT): 159 m<sup>2</sup>  
 GROUND (INT/EXT): 159 m<sup>2</sup>  
 PARKING: 8 m<sup>2</sup>  
 TOTAL: 326 m<sup>2</sup>

Scale in metres. Indicative only. Dimensions are approximate. All information contained herein is gathered from sources we believe to be reliable. However, we cannot guarantee its accuracy and interested persons should rely on their own enquiries.

28 Brisbane Street, Murwillumbah

